



Coach House St Marks Road, Salisbury, Wiltshire, SP1 3AY

£1,050 PCM

About The Property

A characterful two-bedroom detached home on St Marks Road, featuring a bright open-plan living space and two bedrooms, ideal for a professional tenant.

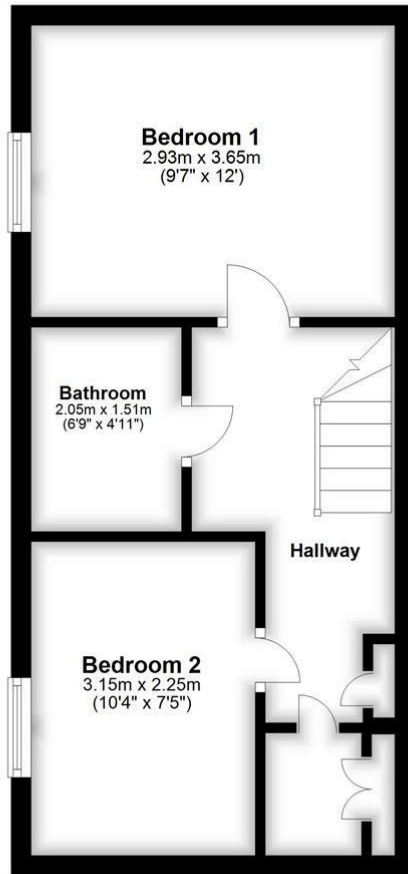
- Detached two-bedroom home
- Open-plan living space
- Large double bedroom
- Second bedroom/study
- Bathroom with shower over bath
- Ample internal storage
- Permit on-street parking
- Double glazed windows
- Gas central heating
- EPC C





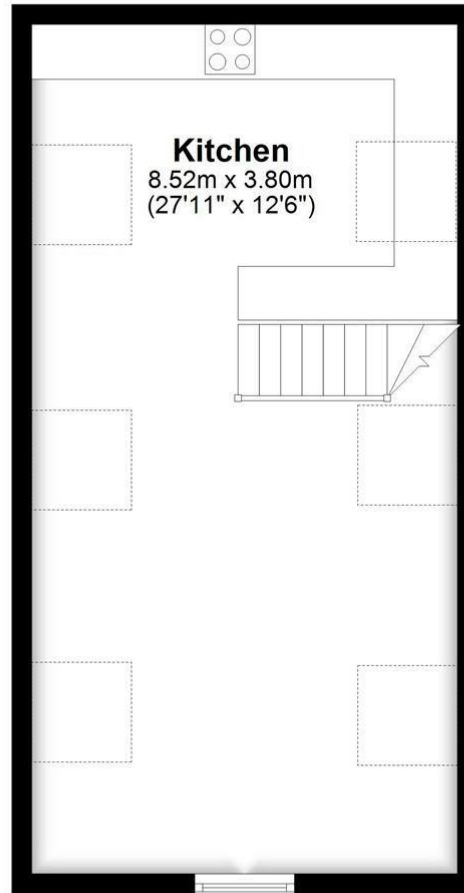
Ground Floor

Approx. 30.4 sq. metres (327.3 sq. feet)



First Floor

Approx. 32.4 sq. metres (348.5 sq. feet)



Total area: approx. 62.8 sq. metres (675.8 sq. feet)

Further Information

Let available date: 8th April 2026
NB: This date is provisional and will only be confirmed once referencing has been successfully completed.

Property type: House - Detached

Furnish type: Unfurnished

Deposit: £1,210

Local authority: Wiltshire Council

Council Tax: Band B

EPC: (0)

Energy Efficiency Rating

	Current	Potential
Very energy efficient - lower running costs		
(92 plus) A		
(81-91) B		
(69-80) C		
(55-68) D		
(39-54) E		
(21-38) F		
(1-20) G		
Not energy efficient - higher running costs		
England & Wales	EU Directive 2002/91/EC	