



Whilst every attempt has been made to ensure the accuracy of the floorplan contained here, measurements of doors, windows, rooms and any other items are approximate and no responsibility is taken for any error, omission or mis-statement. This plan is for illustrative purposes only and should be used as such by any prospective purchaser. The services, systems and appliances shown have not been tested and no guarantee as to their operability or efficiency can be given.  
Made with Metropix ©2023

# Crowther|Key

## SALES

£385,000

2

2



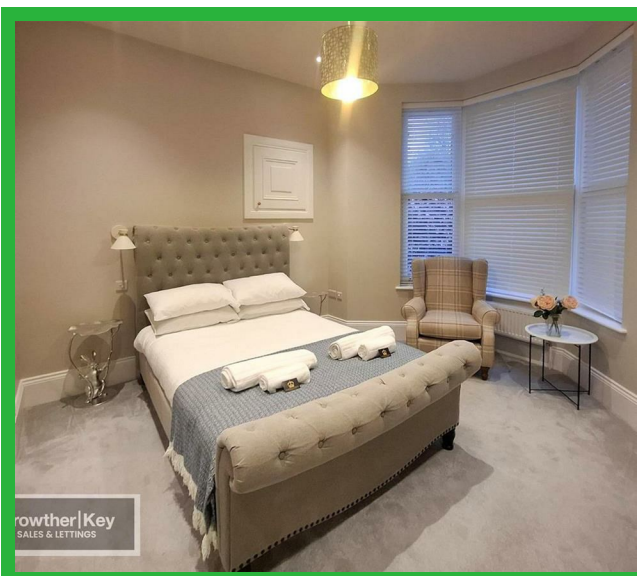
16 Green Lane  
Buxton SK17 9DP

### Energy Efficiency Rating

	Current	Potential
Very energy efficient - lower running costs		
(92 plus) <b>A</b>		
(81-91) <b>B</b>		
(69-80) <b>C</b>		
(55-68) <b>D</b>		
(39-54) <b>E</b>		
(21-38) <b>F</b>		
(1-20) <b>G</b>		
Not energy efficient - higher running costs		
<b>England &amp; Wales</b>	EU Directive 2002/91/EC	

CALL US ON 01298 214441 OR EMAIL [sales@crowtherkey.co.uk](mailto:sales@crowtherkey.co.uk)





**OUTSTANDING DEVELOPMENT OF LUXURY APARTMENTS.** An exclusive development of self-contained apartments and a 2-storey cottage to the rear. Allocated parking spaces and electric car charging points.

#### Full description

**OUTSTANDING DEVELOPMENT OF LUXURY APARTMENTS.** An exclusive development of self-contained apartments and a 2-storey cottage to the rear. All properties have been converted to form very spacious accommodation, each fitted to an extremely high standard with full gas central heating and sealed unit double glazing, luxury fitted kitchens and bathrooms. Allocated parking spaces and electric car charging points.

#### Apartment 1 – Ground Floor

##### Hallway

Understairs cupboard.

##### Open plan Lounge/Kitchen/Diner (31ft 5in x 13ft 5in)

Very attractive Floor units with Quartz worktops, wall cupboards, Belfast sink, integrated dishwasher, washing machine, fridge freezer, Rangemaster Dual fuel range cooker, extractor hood, 6 sealed unit double glazed sash windows, 2 x designer column radiator, double radiator, sealed unit double glazed French doors to balcony, Vaillant combi boiler.

##### Bathroom

Victorian reproduction bath with shower & screen, large designer wash hand basin in vanity unit, central heated towel radiator, low flush wc, UPVC sealed unit double glazed window, extractor fan.

##### Bedroom (12ft 10in x 12ft 8in)

3 sealed unit double glazed sash windows in bay, 2 double radiators.

##### En suite Shower room

Shower enclosure, Vanity unit with designer wash hand basin and low flush wc with concealed cistern.

##### Bedroom (9ft 5in x 8ft 4in)

UPVC French doors to enclosed garden area, double radiator.

##### Outside

Patio area laid to Indian stone

#### Misrepresentation Act 1967 \ Consumer Protection from Unfair Trading Regulations 2008 and the Business Protection from Misleading Marketing Regulations 2008

Every care has been taken with the preparation of these Particulars but complete accuracy cannot be guaranteed. If there is any point, which is of particular importance to you, please obtain professional confirmation; alternatively, we will be pleased to check the information for you. We have not tested any apparatus, equipment, fixture, fittings or service and so cannot verify they are in working order, fit for their purpose, or within ownership of the sellers. Items shown in photographs are NOT included unless specifically mentioned in writing within the sales particulars. They may however be available by separate negotiation.

These details are prepared as a general guide only, and should not be relied upon as a basis to enter into a legal contract, or commit expenditure. An interested party should consult their own surveyor, solicitor or other professionals before committing themselves to any expenditure or other legal commitments. If any interested party wishes to rely upon any information from the agent, then a request should be made and specific written confirmation can be provided. The agent will not be responsible for any verbal statement made by any member of staff, as only a specific written confirmation should be relied upon. The agent will not be responsible for any loss other than when specific written confirmation has been requested.

All Dimensions are approximate. Items shown in photographs are NOT included unless specifically mentioned in writing within the sales particulars. They may however be available by separate negotiation.

#### Misrepresentation Act 1967 and Consumer Protection Regulation

These details are prepared as a general guide only, and should not be relied upon as a basis to enter into a legal contract, or commit expenditure. An interested party should consult their own surveyor, solicitor or other professionals before committing themselves to any expenditure or other legal commitments. If any interested party wishes to rely upon any information from the agent, then a request should be made and specific written confirmation can be provided. The agent will not be responsible for any verbal statement made by any member of staff, as only a specific written confirmation should be relied upon. The agent will not be responsible for any loss other than when specific written confirmation has been requested.