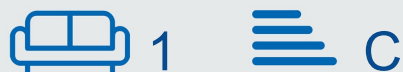



The Mills Building

Nottingham

NG1 1HD

£350,000



 0115 841 1155



- Premium executive apartment
- Located in Lace Market
- Two modern bathrooms
- Mains water and sewerage
- £5,040 annual service charge
- Historic Mills Building
- Three spacious bedrooms
- Gas mains heating
- 999-year lease remaining
- Viewing highly recommended

Plumptre Place, Nottingham, NG1 1HD

Key Features

Positioned within one of Nottingham's most iconic Grade II listed buildings in the heart of the Lace Market, this exceptional three-bedroom apartment offers a rare combination of heritage architecture and high-end contemporary design.

Accessed via a private lift opening directly into the apartment, the property immediately sets a tone of exclusivity and privacy rarely found in city-centre living.

At the heart of the home is a striking open-plan living space, beautifully styled with herringbone flooring, expansive sash windows, and a bespoke designer kitchen complete with island and premium integrated appliances, perfect for both entertaining and everyday living.

The apartment has been thoughtfully upgraded throughout, showcasing a refined interior aesthetic with elegant finishes, statement lighting, and carefully curated design details.

The accommodation comprises three well-proportioned bedrooms, including a luxurious principal suite with en-suite, alongside a stylish main bathroom featuring a freestanding bath and high-spec finishes. A separate home office provides an ideal space for remote working.

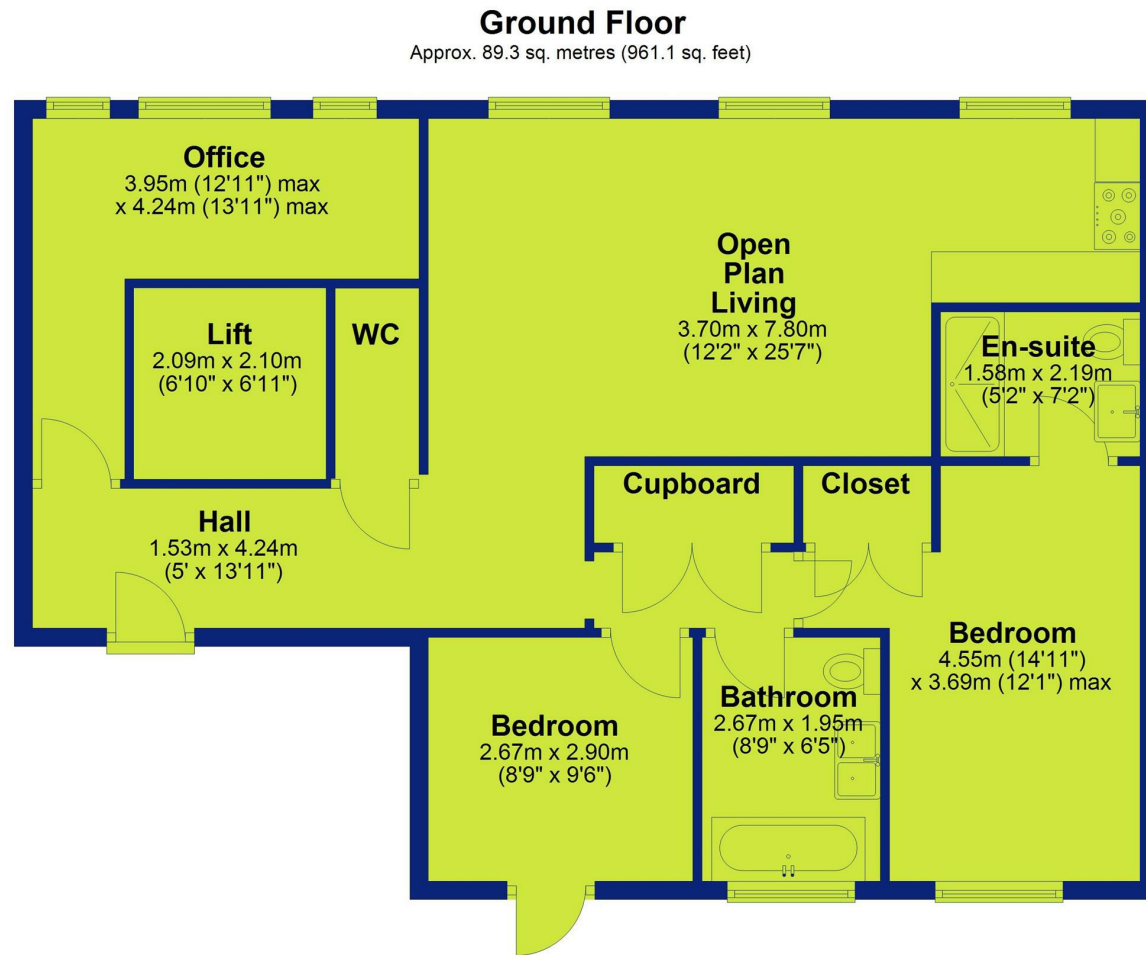
Further benefits include a secure, allocated on-site parking space, an invaluable feature in such a central location.

The property is offered with a long lease of approximately 999 years, providing long-term security and appeal for both owner-occupiers and investors alike.

Located just moments from Nottingham city centre, residents can enjoy immediate access to a vibrant mix of independent restaurants, bars, and cultural amenities, all within walking distance.



Plumptre Place, Nottingham, NG1 1HD

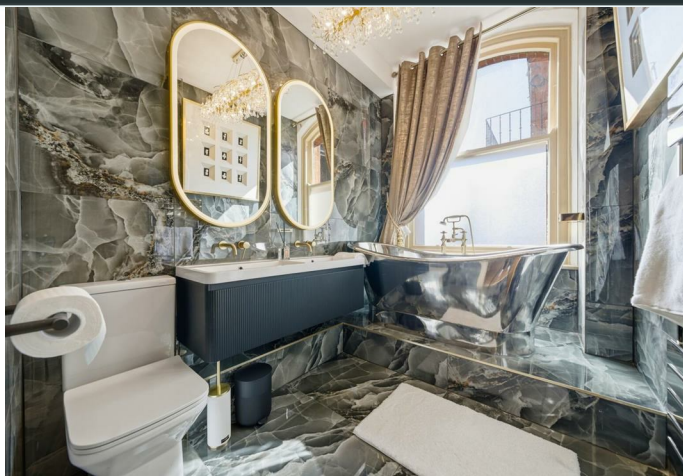
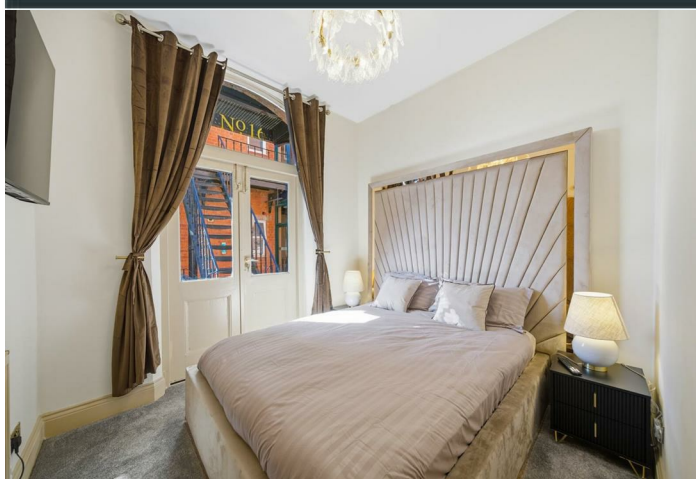


Total area: approx. 89.3 sq. metres (961.1 sq. feet)



0115 841 1155

Plumptre Place, Nottingham, NG1 1HD




Interested in this home?

Contact the FHP Living Team on 0115 841 1155

23 Bridgford Road
West Bridgford
Nottingham
NG2 6AU

1 Weekday Cross
The Lace Market
Nottingham
NG1 2GB

Energy Efficiency Rating		Current	Potential
Very energy efficient - lower running costs			
(92 plus) A			
(81-91) B			
(69-80) C		75	81
(55-68) D			
(39-54) E			
(21-38) F			
(1-20) G			
Not energy efficient - higher running costs			
England & Wales		EU Directive 2002/91/EC	

These sales particulars have been prepared by FHP Living on the instruction of the vendor. Services, equipment and fittings mentioned in these particulars have NOT been tested, and as such, no warranties can be given. Prospective purchasers are advised to make their own enquiries regarding such matters. These sales particulars are produced in good faith and are not intended to form part of a contract. Whilst FHP Living have taken care in obtaining internal measurements, they should only be regarded as approximate.

Purchaser information - Under the Protecting Against Money Laundering and the Proceeds of Crime Act 2002, FHP Living require any successful purchasers proceeding with a purchase to provide two forms of identification i.e. passport or photocard driving license and a recent utility bill. This evidence will be required prior to FHP Living instructing solicitors in the purchase or the sale of a property.