

Apartment 4, £2,533 per month*

(Other charges apply)

RICHMOND
VILLAGES

Part of Bupa

GF

1



1



EPC - C



1 bedroom ground floor apartment

A spacious, one bedroom, ground floor assisted living apartment, with large patio windows leading to a patio overlooking the woodland gardens. The apartment offers access to communal facilities including reception, the restaurant, bar and coffee area, library, wellness spa, and numerous terraces

Specification

- A bright living room has views across the woodland.
- The well-equipped fitted kitchenette has base units, stainless steel sink and drainer, work surface, microwave and fridge freezer.
- The bedroom is a generously sized.
- A beautifully tiled shower room has a WC and wash hand basin set within a fully fitted vanity unit and under sink storage spotlights to ceiling.
- TV and satellite points*.
- Well stocked flower borders and lawns maintained by the Village Gardeners.
- Allocated parking space for one car.



*Satellite subscription not included.

Important Notice: These particulars are intended to give a fair and substantially correct overall description. Other fees and charges apply, please contact the Village Advisers for further details.

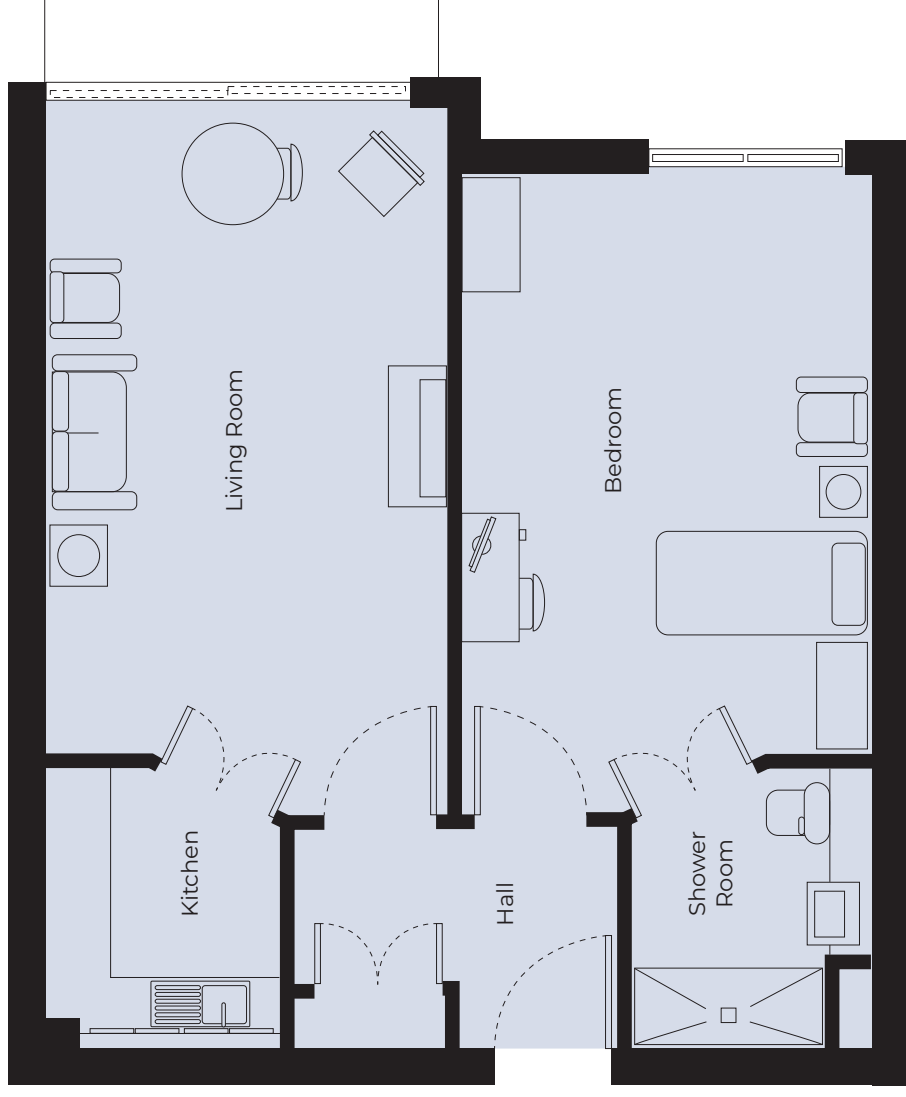
01242 474 333

cheltenham@richmond-villages.com

Richmond Villages Cheltenham,
Hatherley Lane, Cheltenham, Gloucestershire GL51 6PN

Apartment 4

Ground floor | 58.87m² – 634ft²



Kitchenette	2500mm x 2120mm 8'2" x 6'11"
Living Room	6240mm x 3620mm 20'5" x 11'10"
Bedroom	5080mm x 3630mm 17'8" x 11'11"
Shower Room	2500mm x 2120mm 8'2" x 6'11"
Patio Area	3500mm x 2500mm 11'5" x 8'2"

These particulars are intended to give a fair and substantially correct overall description.

Measurements have been taken at 1500mm skimming height.

All dimensions are approximate. Bedroom measurements include the wardrobe if applicable. Room measurements include bay windows if applicable.

Furniture layout is to give an indicative impression. Although all efforts have been made to ensure its accuracy at time of print dimensions, fixtures, fittings, finishes and specifications are subject to change without notice.

The properties are sold unfurnished.

