



16 Stubbs Drive, London, SE16 3EE

**** PROPERTY IS VIRTUALLY STAGED ****

A naturally bright one bedroom apartment, located in Bermondsey a short walk away from Surrey Quays and Bermondsey Stations.

The property features a generous reception room with space to dine, a tidy modern kitchen, well-sized double bedroom, and a stylish bathroom. Additional storage can be found in the hallway.

The property is close to many local amenities such as cafes, gym, shopping centre, supermarket, Biscuit Factory regeneration project, and the greenery of Southwark Park.

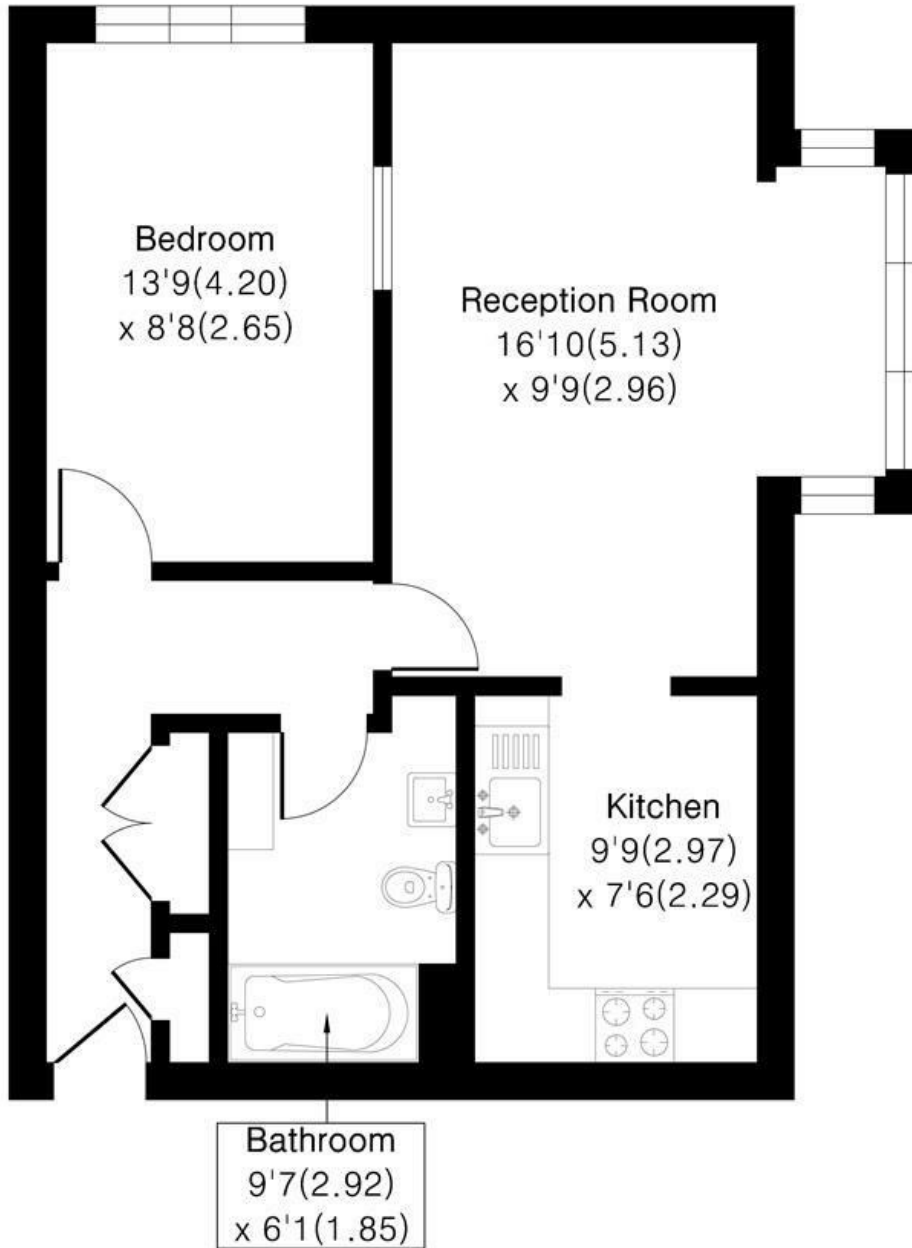
- Naturally bright one bedroom apartment
- Modern Kitchen
- Good Transport Links
- Close to Local Amenities
- Plenty of Storage

Alex & Matteo
ESTATE AGENTS

£1,500 Per month

**Flat 298, Lewis Court,
16 Stubbs Drive London, SE16 3EE**

Approximate Area = 540 sq ft / 50.1 sq m
For identification only - Not To Scale



Floor plan Produced in accordance with RICS Property Measurement 2nd Edition.
Incorporating International Property Measurement Standards (IPMS2 Residential).
Produced for Alex & Matteo Estate Agents.

