



**WARWICK SQUARE**  
PIMLICO

**JACKSON-STOPS** 

## WARWICK SQUARE PIMLICO, SW1V

ASKING PRICE: £1,750,000

A beautifully refurbished three-bedroom maisonette of circa 1700 sq ft with its own private entrance, is presented to the market in Pimlico, SW1.

Arranged over two floors, the property is presented in excellent condition and offered with vacant possession upon completion. The ground floor features an impressive open-plan living, kitchen and dining space with four-metre-high ceilings, a guest cloakroom and a bespoke handmade kitchen with European oak cabinetry, Carrara marble worktops, Miele appliances and Barraza gas hobs.

The lower ground floor comprises three generous double bedrooms, each with a stylishly designed en-suite, a utility room, and access to a patio garden as well as a private external vault.

This would suit all those looking for central London home, pied -a-terre or buy to let investment.

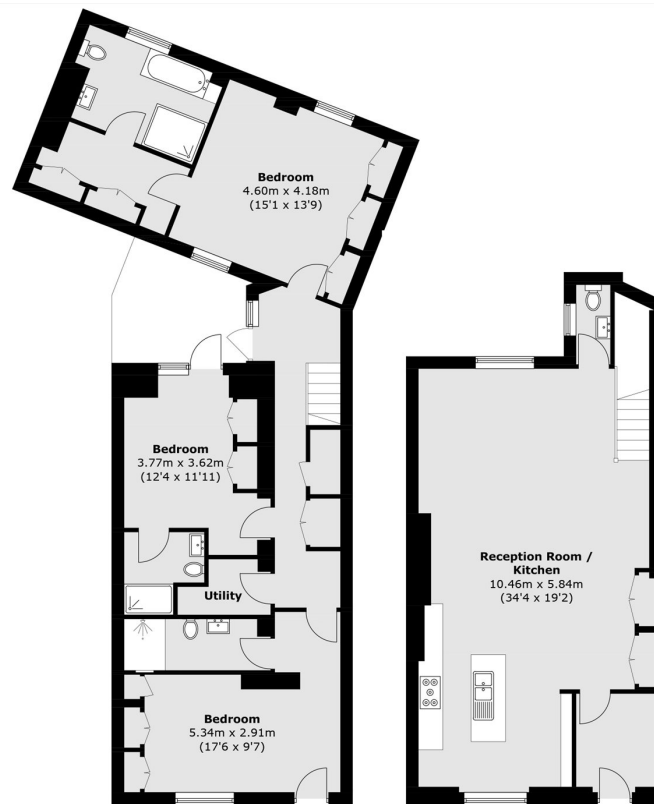
Ideally positioned for local transport links including Pimlico Underground and Victoria mainline station / Gatwick Express, as well as being within walking distance of several highly regarded schools and of course Battersea Park.

### KEY FEATURES

- Share Of Freehold
- Three Bedrooms
- Internal Patio
- Grade II Listed
- SC: £5,434 pa + Res Fund
- Private Front Door

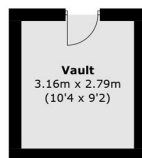






**Lower Ground Floor**

**Ground Floor**



**Vault**  
3.16m x 2.79m  
(10'4 x 9'2)

(Not Shown In Actual  
Location / Orientation)

Total area (approx.): 159.1 sq. m (1,712.5 sq. ft)  
(Excluding Vault)

Vault area (approx.): 8.9 sq. m (95.8 sq. ft)

Energy Rating: D. We aim to make our particulars both accurate and reliable. However they are not guaranteed; nor do they form part of an offer or contract. If you require clarification on any points then please contact us, especially if you are travelling some distance to view. Please note that appliances and heating systems have not been tested and therefore no warranties can be given as to their good working order.

**ASKING PRICE: £1,750,000**

**PIMLICO**

**020 7828 4050**

pimlicosales@jackson-stops.com

jackson-stops.co.uk

**JACKSON-STOPS** 