

Grimwood Road, TW1

£1,100,000

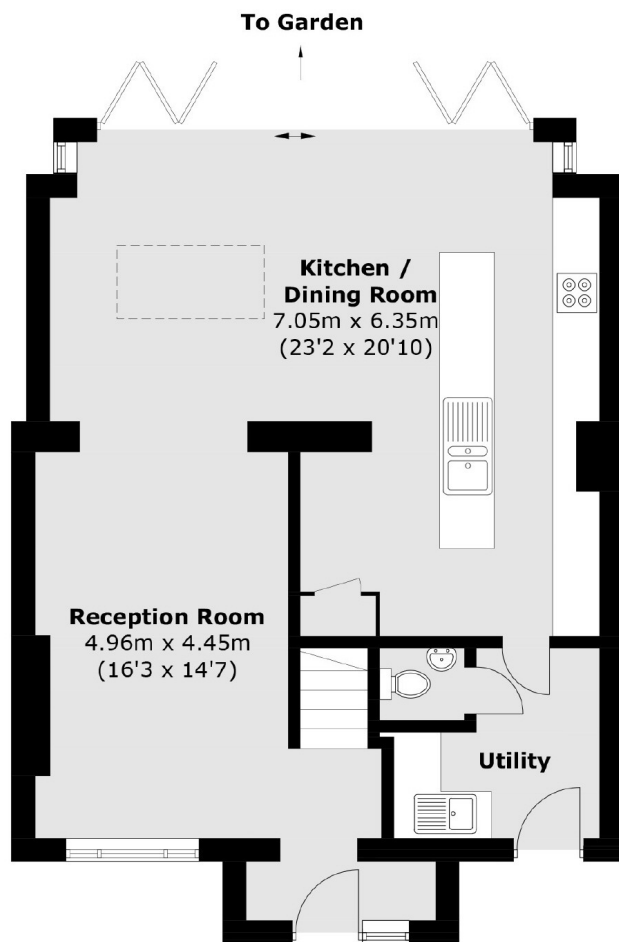
Offered with no onward chain is this three double bedroom mid terrace family home located in central Twickenham and it benefits from having a stylish open plan kitchen/family room with bi-fold doors, a utility room, a downstairs W.C and off street parking.

Grimwood Road is a popular residential cul-de-sac located just moments from Twickenham mainline station which offers a fast link to London Waterloo. The area is also renowned for both excellent state and private schools such as Orleans Park and St Mary's.

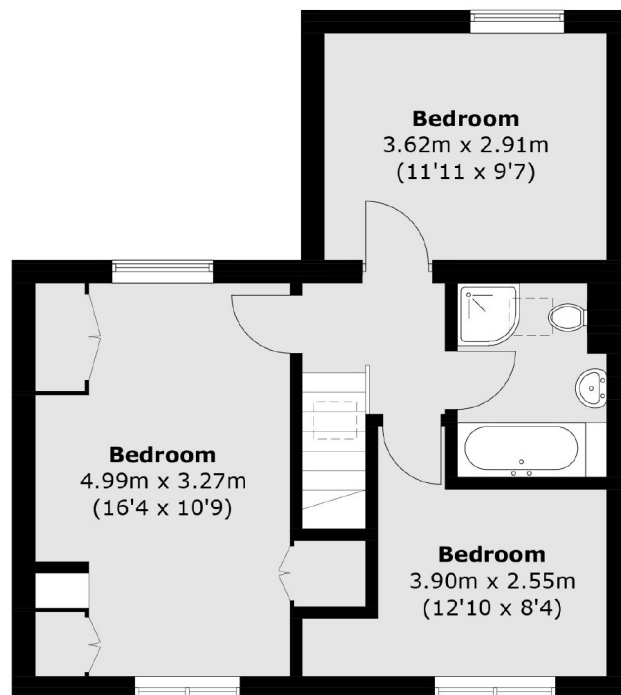
Features

- Three Double Bedrooms
- No Onward Chain
- Open Plan Kitchen/Family Room
- Off Street Parking
- Downstairs W.C
- Central Location

Grimwood Road, Twickenham, TW1



Ground Floor



First Floor

Total area (approx.): 115.6 sq. m (1,244.3 sq. ft)