



Guide Price
£200,000

Freehold

2x  1x  1x 

**Coronation Mews, Leed
Street, Sandown, Isle of
Wight, PO36**

OVER 60?

Secure this property
for up to **59% less!**

Pittis 
Helping you move forwards



Main features

- Perfect lock and leave bolt hole terraced house
- Walking distance to the beach and town centre
- Spacious lounge with character features
- Tucked away in a quiet location with manageable courtyard garden
- Allocated parking space

Accommodation

GROUND FLOOR

Hallway

Lounge/Dining Area: 14'7 x 14'1
(4.45m x 4.30m)

Kitchen: 9'6 x 7'0 (2.90m x 2.14m)

Bathroom

FIRST FLOOR

Landing

Bedroom 1: 14'0 x 9'6 (4.27m x 2.90m)

Bedroom 2: 11'6 x 10'3 (3.51m x 3.13m)

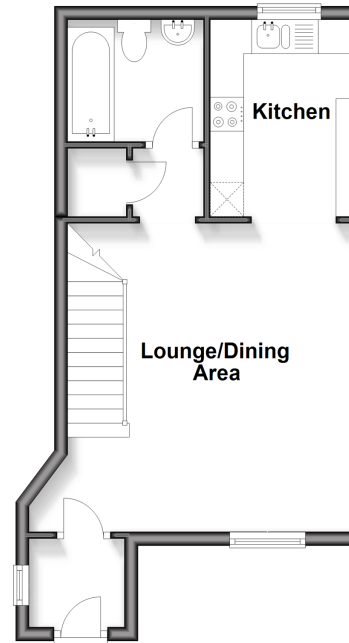
OUTSIDE

Off Road Parking

Courtyard Front Garden

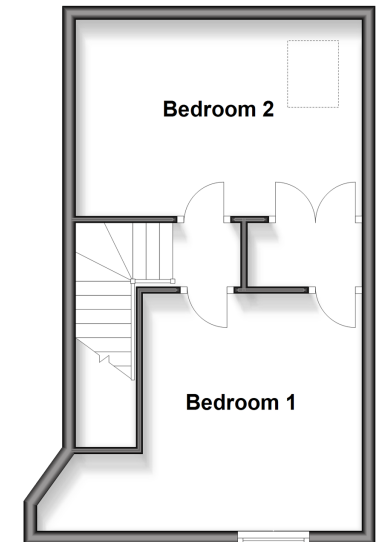
Ground Floor

Approx. 34.9 sq. metres (375.6 sq. feet)



First Floor

Approx. 32.9 sq. metres (354.1 sq. feet)



Call Sandown - 01983 407444 ■ pittis.co.uk

- Legal advice should be taken to verify fixtures/fittings, planning, alterations and/or lease details
- Appliances & services are untested, dimensions are approximate and floor plans are not to scale
- Through a Homewise Home For Life Plan people aged 60+ can secure this property for up to 59% less, by purchasing a Lifetime Lease



60521295/20260203/DW/JW