



## FERNHURST ROAD

LONDON SW6



## FERNHURST ROAD

An impressive three bedroom house that is immaculately presented with a 25 ft garden with rear access and the option of off-street parking.

   EPC  
3 4 2 C

Local Authority: London Borough of Hammersmith and Fulham

Council Tax band: F

Tenure: Freehold

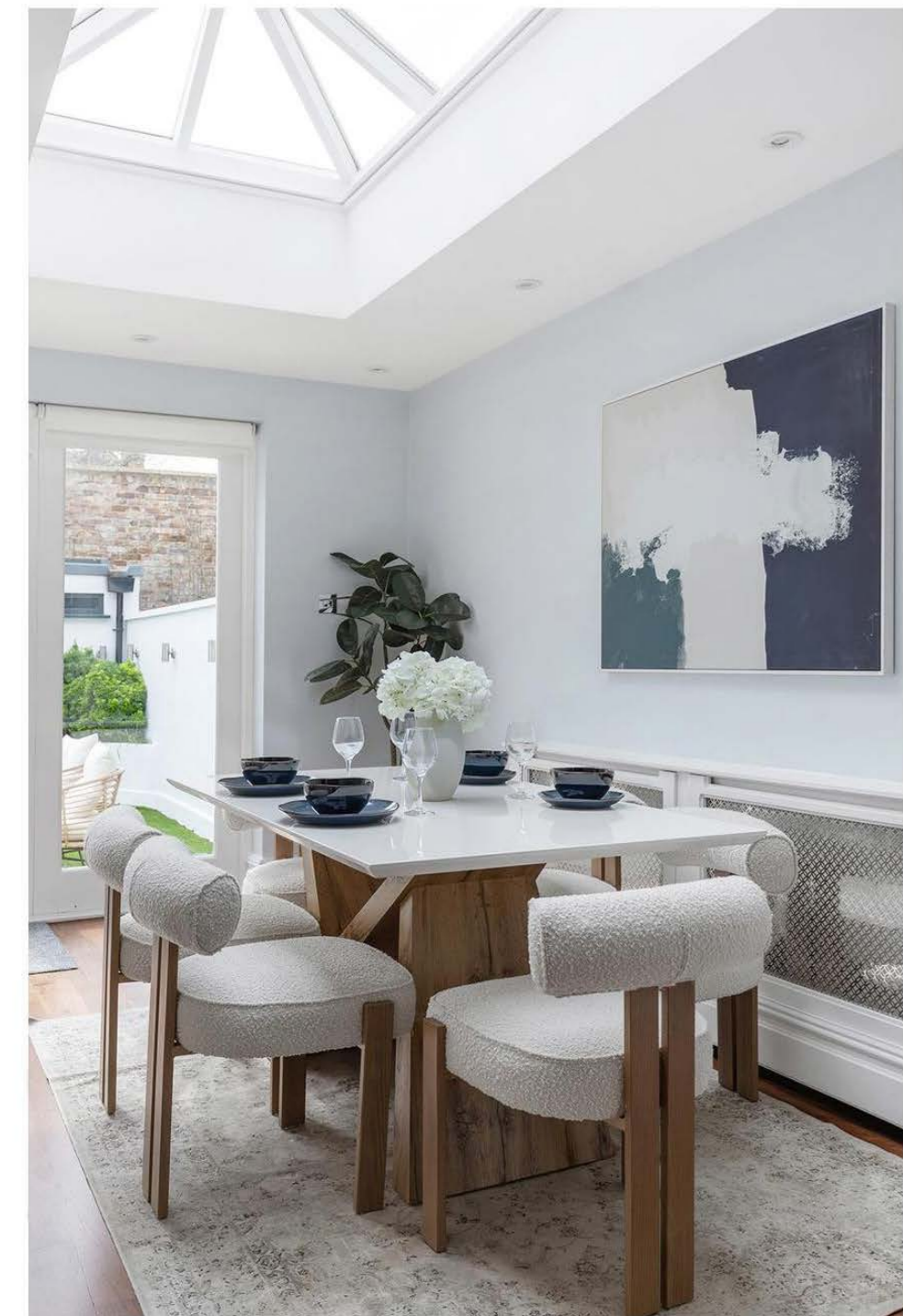
Guide Price: £2,300,000



Perfectly positioned on a sought-after residential street, this impressive family home is immaculately presented, with a 25 ft garden with rear access and the option for secure off street parking.

The ground floor has been designed to maximise light and flow, featuring an impressive double reception room with a charming gas fireplace and refined finishes throughout. To the rear, an open plan kitchen and dining room creates the ideal setting for both everyday living and entertaining. Complete with cabinetry, a central island, and integrated appliances, the space opens directly onto the garden through full height glazed doors. The garden includes a brick-built storage shed and a roll-top gate enabling convenient off street parking.





The lower ground floor offers an additional level of flexible living space, incorporating a well-proportioned reception room, a practical utility area, and a contemporary shower room—ideal for guests or multifunctional use.

The first floor comprises two generous bedrooms, including a principal suite with an elegant en suite bathroom. A further double bedroom on this floor is served by the main family bathroom. The top floor offers a third bedroom with an adjoining shower room and excellent eaves storage, creating the perfect private space for guests, older children, or a home office.



## LOCATION

Fernhurst Road is a sought-after residential street, ideally situated near the vibrant shops, cafes and restaurants of Fulham Road. The area is well-served by transport links, with convenient bus routes and District Line underground services from Parsons Green and Putney Bridge, providing swift connections across London.

The area is particularly popular with families, with several highly regarded schools nearby, including Parsons Green Prep, Fulham Prep and Lady Margaret School.

Residents also enjoy access to Bishops Park, one of Fulham's most historic and well-loved green spaces, set along the River Thames, as well as the newly developed Fulham Pier, which introduces a vibrant waterfront destination with dining, leisure, and community amenities.





Approximate Gross Internal Area = 206.86 sq m / 2,227 sq ft



This plan is for layout guidance only. Not drawn to scale unless stated. Windows and door openings are approximate. Whilst every care is taken in the preparation of this plan, please check all dimensions, shapes and compass bearings before making any decisions reliant upon them. (ID767266)

We would be delighted  
to tell you more.

**Lewin Craig-Corbett**

+44 2077512406

lewin.craig-corbett@knightfrank.com

**Knight Frank Fulham Sales**

203 New Kings Road

SW6 4SR

[knightfrank.co.uk](https://www.knightfrank.co.uk)

Your partners in property

1. Particulars: These particulars are not an offer or contract, nor part of one. You should not rely on statements given by Knight Frank in the particulars, by word of mouth or in writing ("information") as being factually accurate about the property, its condition or its value. Neither Knight Frank nor any joint agent has any authority to make any representations about the property, and accordingly any information given is entirely without responsibility on the part of Knight Frank. 2. Material Information: Please note that the material information is provided to Knight Frank by third parties and is provided here as a guide only. While Knight Frank has taken steps to verify this information, we advise you to confirm the details of any such material information prior to any offer being submitted. If we are informed of changes to this information by the seller or another third party, we will use reasonable endeavours to update this as soon as practical. 3. Photos, Videos etc: The photographs, property videos and virtual viewings etc. show only certain parts of the property as they appeared at the time they were taken. Areas, measurements and distances given are approximate only. 4. Regulations etc: Any reference to alterations to, or use of, any part of the property does not mean that any necessary planning, building regulations or other consent has been obtained. A buyer must find out by inspection or in other ways that these matters have been properly dealt with and that all information is correct. 5. Fixtures and fittings: A list of the fitted carpets, curtains, light fittings and other items fixed to the property which are included in the sale (or may be available by separate negotiation) will be provided by the Seller's Solicitors. 6. VAT: The VAT position relating to the property may change without notice. 7. To find out how we process Personal Data, please refer to our Group Privacy Statement and other notices at <https://www.knightfrank.com/legals/privacy-statement>.

Particulars dated May 2026. Photographs and videos dated May 2026. All information is correct at the time of going to print. Knight Frank is the trading name of Knight Frank LLP. Knight Frank LLP is a limited liability partnership registered in England and Wales with registered number OC305934. Our registered office is at 55 Baker Street, London W1U 8AN. We use the term 'partner' to refer to a member of Knight Frank LLP or an employee or consultant. A list of members names of Knight Frank LLP may be inspected at our registered office. If you do not want us to contact you further about our services then please contact us by either calling 020 3544 0692, email to [marketing.help@knightfrank.com](mailto:marketing.help@knightfrank.com) or post to our UK Residential Marketing Manager at our registered office (above) providing your name and address.