

7 Brook View, £320,000*

(Other charges apply)

RICHMOND
VILLAGES

Part of Bupa

GF

1



1



EPC - C



1 bedroom ground floor apartment

This modern and bright one-bedroom, ground floor apartment is ideally situated on Brook View within our luxurious retirement village. The property features elegant French doors from the bedroom, opening onto a charming private patio that enjoys beautiful views across the landscaped grounds. For those seeking an active and sociable lifestyle, this location truly offers the best of both worlds. Just a short stroll takes you to the heart of our vibrant retirement village, where you can enjoy an array of outstanding facilities, welcoming social spaces, and opportunities to take part in a wide range of activities.



Specification

- A bright and generously sized living area with dual-aspect windows and a large bay, ideal for relaxing or entertaining.
- A modern, well-equipped kitchen with integrated appliances, stylish units, and practical worktop space.
- A light and airy bedroom featuring fitted wardrobes and elegant French doors opening onto the private patio.
- Shower room with walk-in shower and wood finish fitted suite.
- Spacious hallway offering access to all rooms, complete with a convenient storage cupboard.
- TV and satellite points*.
- Beautifully maintained communal gardens with nearby bowling green, nature reserve, and private allotments.

*Satellite subscription not included.

Important Notice: These particulars are intended to give a fair and substantially correct overall description. All dimensions are approximate. The properties are sold unfurnished. Properties are sold on a 125 year lease and this property has 110 years remaining.



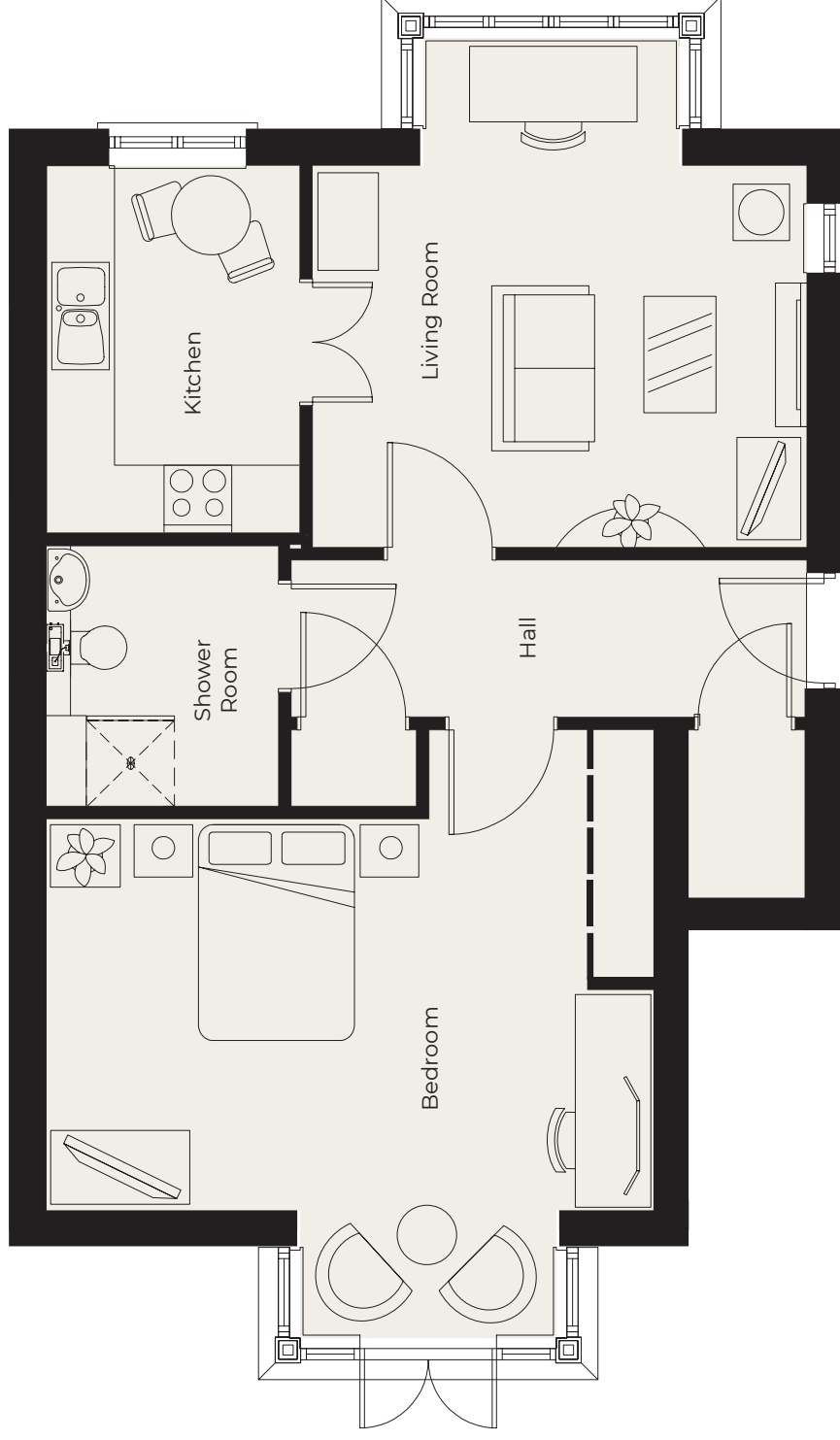
01235 773970

letcomberegis@richmond-villages.com

Richmond Villages Letcombe Regis,
South Street, Letcombe Regis, Oxfordshire OX12 9RG

7 Brook View

Ground Floor



- Kitchen**
2238mm x 3250mm
7'4" x 10'8"
- Living Room**
4370mm x 3375mm
14'4" x 11'1"
- Bedroom**
5370mm x 4250mm
17'7" x 15'8"
- En Suite Shower Room**
2300mm x 2050mm
7'7" x 6'9"

These particulars are intended to give a fair and substantially correct overall description. Measurements have been taken at 1500mm skirting height. All dimensions are approximate. Bedroom measurements include the wardrobe if applicable. Room measurements include bay windows if applicable. Furniture layout is to give an indicative impression. Although all efforts have been made to ensure its accuracy at time of print dimensions, fixtures, fittings, finishes and specifications are subject to change without notice. The properties are sold unfurnished.

