



West Street | | Ryde | PO33 2DF

£305,000



West Street |
 Ryde | PO33 2DF
 £305,000



Located within Nursery Gardens, just off West Street in Ryde, this semi-detached home offers well-balanced accommodation in a convenient residential setting.

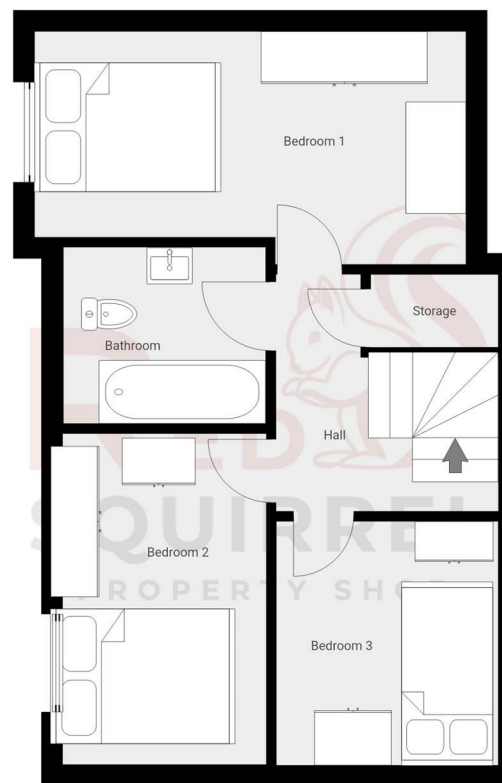
The property provides three good-sized bedrooms, making it well suited to families or anyone looking for additional space. The reception room offers a comfortable area to unwind, while the practical layout allows the home to work well for everyday living.

Situated close to the centre of Ryde, the property is within easy reach of local shops, schools, parks, and transport links, making it a convenient choice for those wanting access to the town while still enjoying a quieter residential location.

A well-proportioned home in a popular part of Ryde, this property presents a great opportunity for buyers looking for a comfortable and practical place to call home.

- 3 BEDROOMS
- SEMI-DETACHED
- CLOSE TO RYDE AMENITIES
- IDEAL FOR FAMILIES
- CHARMING NEIGHBOURHOOD

- Living Room
- Kitchen
- Bedroom 1
- Bedroom 2
- Bedroom 3
- Bathroom
- Downstairs Shower Room
- Hall
- Rear Garden
- Front Exterior



Energy Efficiency Rating		Current	Potential
<i>Very energy efficient - lower running costs</i>			
(92 plus)	A		89
(81-91)	B		
(69-80)	C	77	
(55-68)	D		
(39-54)	E		
(21-38)	F		
(1-20)	G		
<i>Not energy efficient - higher running costs</i>			
England & Wales		EU Directive 2002/91/EC	

Council Tax Band **D**
 EPC Rating **C**

3 Langely Court Pyle Street
 Newport
 Isle of Wight
 PO30 1LA
 01983 521212

enquiries@redsquirrelpropertyshop.co.uk
www.redsquirrelpropertyshop.co.uk

THIS FLOOR PLAN IS PROVIDED WITHOUT WARRANTY OF ANY KIND. SENSOPHA DISCLAIMS ANY WARRANTY INCLUDING, WITHOUT LIMITATION, SATISFACTORY QUALITY AND ACCURACY OF DIMENSIONS.