



COWDREY CLOSE, Amblecote, DY8 4AY

Offers In Region Of £195,000

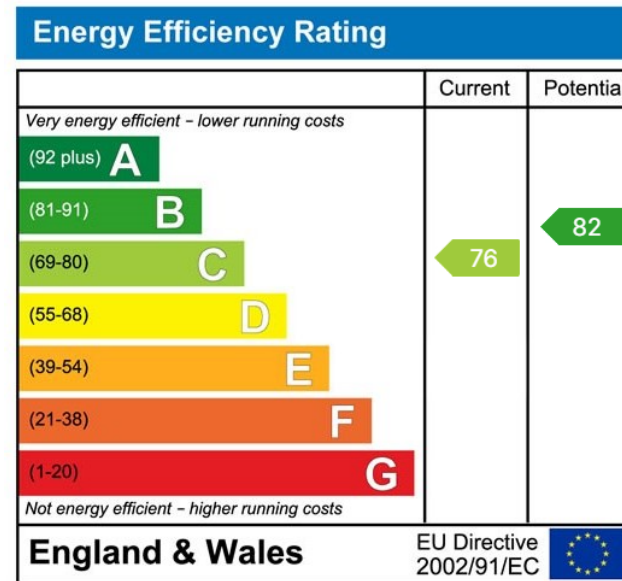
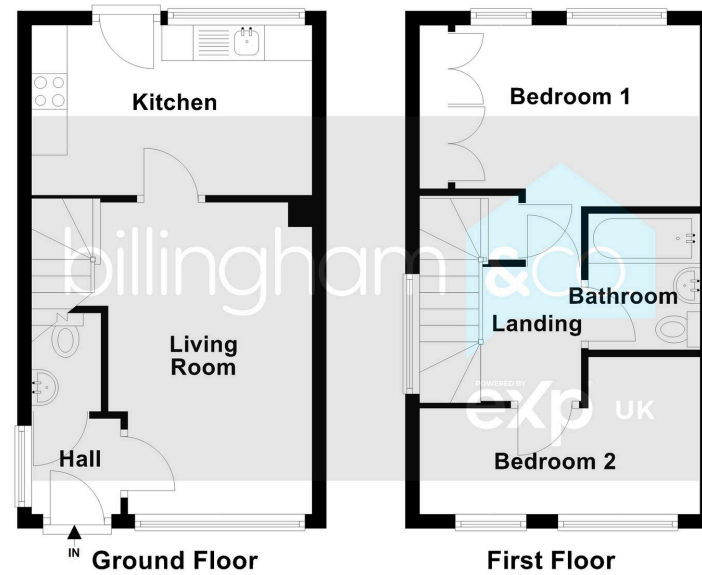
🛏️ 2 🚿 1 🚺 1

- A well presented TWO BEDROOM modern end town house.
- Cloakroom, Living Room, Kitchen.
- Private Rear Garden, allocated parking space.
- Further details are available.
- EPC Rating C.
- Popular cul-de-sac setting, close to local amenities.
- Two Bedrooms, family Bathroom.
- For sale for 40% Share or 100% (subject to T&C's)
- Having NO UPWARD CHAIN, an early viewing is advised.



A well presented TWO BEDROOM MODERN END TOWN HOUSE, occupying this popular cul-de-sac location on the outskirts of Stourbridge, having local amenities close at hand. This property is available for a 40% share for £78,000 or full market value £195,000 (Subject to T&C's) Thought an ideal purchase for a FTB, or a young family and having NO UPWARD CHAIN, an early viewing is strongly advised.





Sales 01384 444 004 / Lettings 01384 445 075
 hello@billingham.properties
 www.billingham.properties



Agents Note: Whilst every care has been taken to prepare these particulars, they are for guidance purposes only. All measurements are approximate and are for general guidance purposes only and whilst every care has been taken to ensure their accuracy, they should not be relied upon and potential buyers are advised to recheck the measurements.