

## 2 Bedroom End Terraced House for Sale - Offers in Excess of £120,000

Lime Street, Sutton Bridge, Spalding, Lincs, PE12 9UL



### KEY FEATURES

- No upward chain!
- FOR INVESTORS
- To be sold with sitting tenant
- Long term tenant paying £540pcm
- End terraced house
- 2 Bedrooms
- 2 Reception rooms
- Rear garden
- OFF ROAD PARKING for 2 cars
- Close to amenities

## Description

LANLORDS &#8230;..THIS ONE IS FOR YOU! This well looked after property has long term tenants (who are happy to stay) who are currently paying £540pcm. This end terraced house is situated within the popular Sutton Bridge and is close to many amenities, popular schools and lovely walks. It also has good access to Kings Lynn, Wisbech & Long Sutton.

The accommodation includes a kitchen, 2 reception rooms and a bathroom on the ground floor with 2 good sized bedrooms upstairs. The property benefits from having double glazing and gas central heating.

Outside has plenty to offer with a nice sized rear garden & off road parking for 2 cars (which can be unusual for this price range!).

Contact us today to arrange a viewing on this great investment opportunity - Ready to purchase and start earning straight away!! Being sold with NO UPWARD CHAIN!

## Ground Floor

Lounge - 13' 9" x 11' 8" (4.22m x 3.56m)

Dining Room - 14' 2" x 7' 10" (4.34m x 2.39m)

Kitchen - 9' 8" x 9' 6" (2.97m x 2.9m)

Bathroom - 9' 8" x 5' 1" (2.95m x 1.55m)

## First Floor

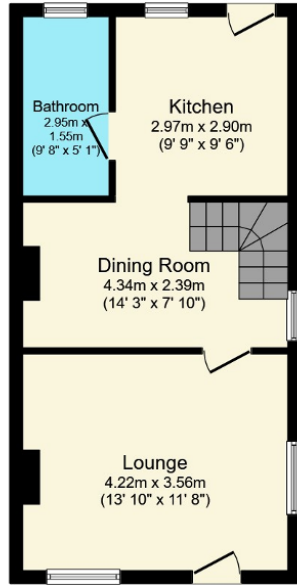
Landing -

Bedroom 1 - 13' 9" x 11' 8" (4.22m x 3.56m)

Bedroom 2 - 10' 2" x 8' 3" (3.1m x 2.54m)

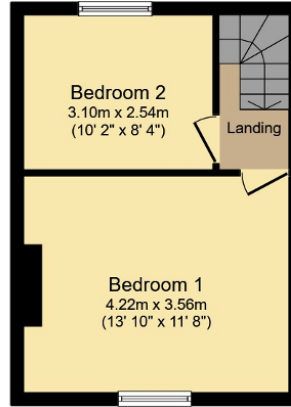






**Ground Floor**

Floor area 39.5 sq. m. (425 sq. ft.) approx



**First Floor**

Floor area 26.9 sq. m. (290 sq. ft.) approx

Total floor area 66.4 sq. m. (715 sq. ft.) approx

This Floor Plan is for illustration purposes only and may not be representative of the property. The position and size of doors, windows and other features are approximate. Unauthorized reproduction prohibited. © PropertyBOX