






ASHLEY GARDENS, AMBROSDEN AVENUE

Westminster, SW1P



A PORTERED BLOCK WITH BEAUTIFUL VIEWS OVER THE GARDEN

A spacious three-bedroom ground floor apartment in the prestigious Ashley Gardens mansion blocks, featuring elegant features and grand proportions.

			EPC
3-4	3	2-3	D

Local Authority: City of Westminster

Council Tax band: H

Tenure: Share of Freehold Approximately 984 years remaining on the lease.

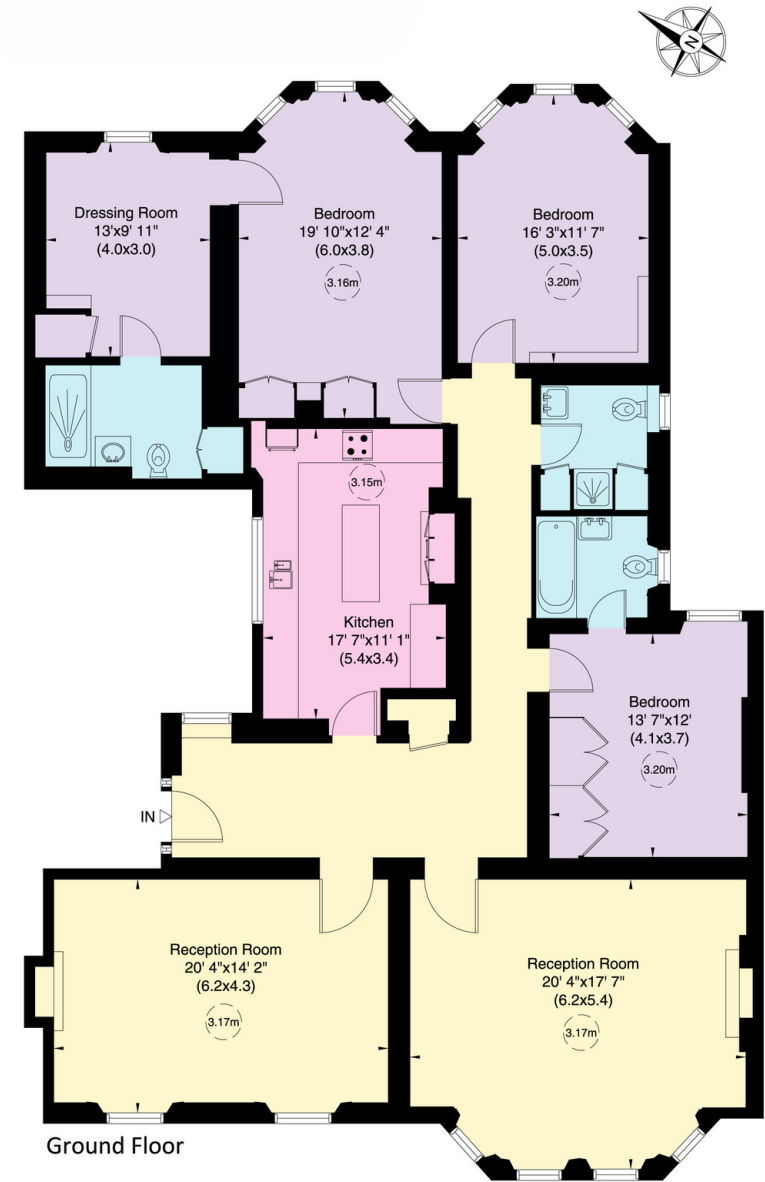
Ground rent: £80 per annum.*

Service charge: £12,364 per annum, reviewed annually.*

Guide Price: £2,000,000

Upon entering the apartment, there is a spacious hallway. To the right, two impressive reception rooms face southwest. Across the hallway, you will find a well-appointed kitchen with an island. The principal bedroom is ensuite with a walk in dressing area, a further ensuite bedroom and another room being used as a reception room but may likely be used as another bedroom using the family bathroom. Situated within the Westminster Cathedral Conservation Area, Ashley Gardens provides easy access to local landmarks, including Buckingham Palace, the Houses of Parliament, and Westminster Abbey. Nearby amenities, include shops and restaurants along Victoria Street, and offers excellent proximity to schools. There are great transport links including Victoria underground and mainline station, and other underground stations including St James's Park and Pimlico underground stations nearby.

Please note, we have been unable to obtain the review period and next review date for the service charge and ground rent. Please make your own enquiries.



Ashley Gardens, Ambrosden Avenue SW1
 Approximate Gross Internal Area = 196 sq m / 2115 sq ft

This plan is for layout guidance only. Not drawn to scale unless stated. Windows and door openings are approximate. Whilst every care is taken in the preparation of this plan, please check all dimensions, shapes and compass bearings before making any decisions reliant upon them. (ID767266)

We would be delighted
to tell you more.

Chris Mulry
+44 7929 716 391
chris.mulry@knightfrank.com

Knight Frank Belgravia
47 Lower Belgrave Street
Belgravia, London SW1W 0LS

[knightfrank.co.uk](https://www.knightfrank.co.uk)

Your partners in property

1. Particulars: These particulars are not an offer or contract, nor part of one. You should not rely on statements given by Knight Frank in the particulars, by word of mouth or in writing ("information") as being factually accurate about the property, its condition or its value. Neither Knight Frank nor any joint agent has any authority to make any representations about the property, and accordingly any information given is entirely without responsibility on the part of Knight Frank. 2. Material Information: Please note that the material information is provided to Knight Frank by third parties and is provided here as a guide only. While Knight Frank has taken steps to verify this information, we advise you to confirm the details of any such material information prior to any offer being submitted. If we are informed of changes to this information by the seller or another third party, we will use reasonable endeavours to update this as soon as practical. 3. Photos, Videos etc: The photographs, property videos and virtual viewings etc. show only certain parts of the property as they appeared at the time they were taken. Areas, measurements and distances given are approximate only. 4. Regulations etc: Any reference to alterations to, or use of, any part of the property does not mean that any necessary planning, building regulations or other consent has been obtained. A buyer must find out by inspection or in other ways that these matters have been properly dealt with and that all information is correct. 5. Fixtures and fittings: A list of the fitted carpets, curtains, light fittings and other items fixed to the property which are included in the sale (or may be available by separate negotiation) will be provided by the Seller's Solicitors. 6. VAT: The VAT position relating to the property may change without notice. 7. To find out how we process Personal Data, please refer to our Group Privacy Statement and other notices at <https://www.knightfrank.com/legals/privacy-statement>.

Particulars dated May 2024. Photographs and videos dated May 2024. All information is correct at the time of going to print. Knight Frank is the trading name of Knight Frank LLP. Knight Frank LLP is a limited liability partnership registered in England and Wales with registered number OC305934. Our registered office is at 55 Baker Street, London W1U 8AN. We use the term 'partner' to refer to a member of Knight Frank LLP, or an employee or consultant. A list of members names of Knight Frank LLP may be inspected at our registered office. If you do not want us to contact you further about our services then please contact us by either calling 020 3544 0692, email to marketing.help@knightfrank.com or post to our UK Residential Marketing Manager at our registered office (above) providing your name and address.