



## Amelia Street, SE17

£2,350 Per calendar month

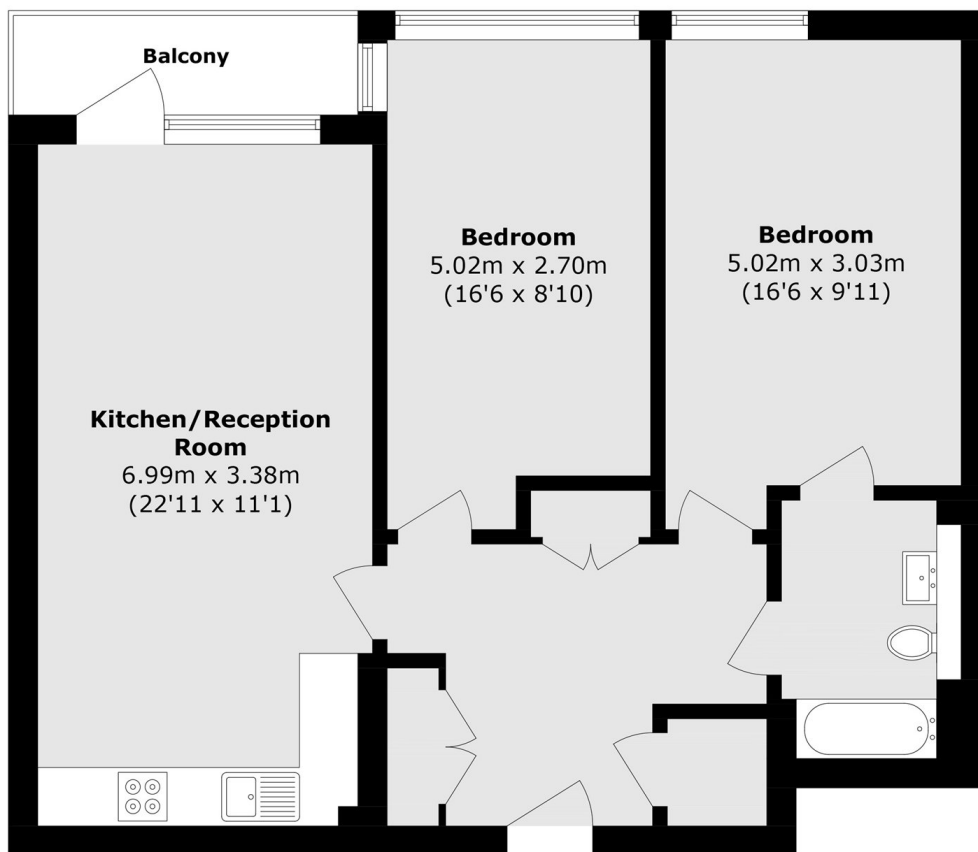
A modern two bedroom apartment located on the second floor of this popular private development. The property offers a modern kitchen/reception room, stylish bathroom and a private balcony.

The location of the Printworks is ideal, with plenty of options for restaurants, bars, supermarkets and transport links of Elephant & Castle and Kennington being close by.

### Features

- Two Double Bedrooms
- Private Development
- Second Floor With Lift
- Private Balcony
- Open Plan Kitchen
- Wooden Floors Throughout

# Amelia Street, London, SE17



Total area (approx.): 74.1 sq. m (797.5 sq. ft)  
Balcony area (approx.): 3.8 sq. m (40.7 sq. ft)