



Warwick Grove, Bedlington, NE22 6NW

£350,000

**Harpers** | POWERED BY **exp** TM UK  
property people



**Bedrooms: 4 | Bathrooms: 2 | Receptions: 3**

Impressively presented and finished to an exceptional standard, this immaculate detached family home offers generous living space, modern design, and a layout perfectly suited to contemporary family life. The property features four bedrooms, served by a family bathroom and a stylish en-suite shower room to the principal bedroom. At the heart of the home is a stunning modern kitchen/diner, ideal for everyday living and entertaining alike. Further ground floor accommodation includes a front aspect living room/play room, a rear aspect second reception/garden room overlooking the garden, along with the added convenience of a ground floor WC, utility room and garage storage. Externally, the home enjoys a West-facing rear garden, perfect for afternoon and evening sun, together with a double driveway providing excellent off-street parking. Located in a brilliant residential area, close to schools, amenities and transport links, this is a truly turn-key family home offering space, style and comfort in equal measure.

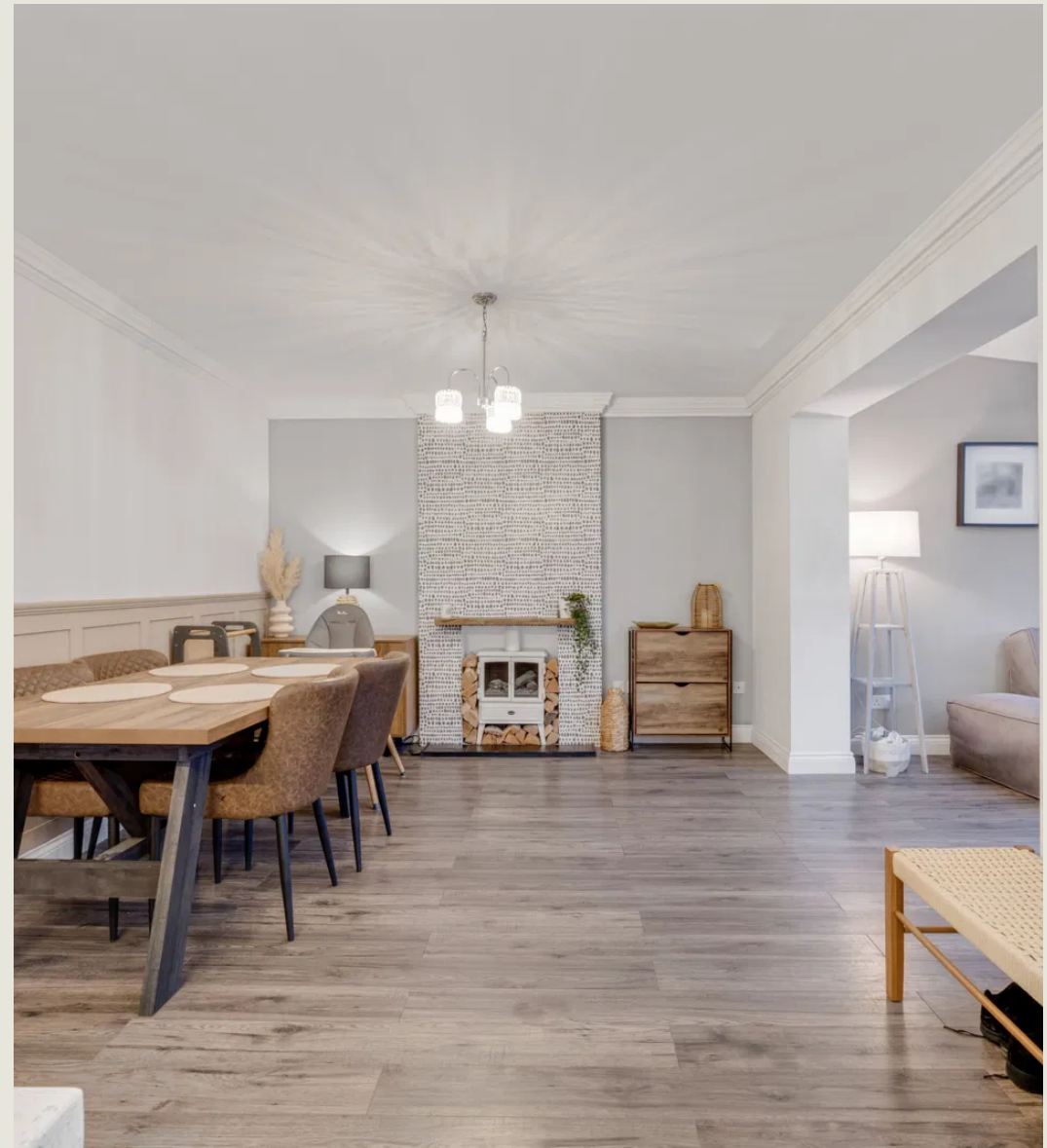
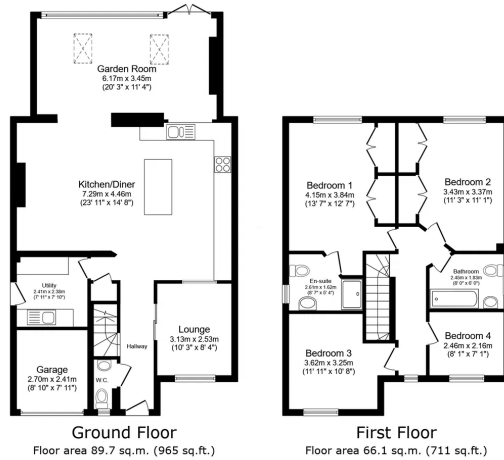
- Immaculate Detached Family Home
- Four Bedrooms
- Family Bathroom & Ensuite Shower Room
- Stunning Modern Kitchen/Diner
- Front Aspect Living Room/Play Room
- Rear Aspect Second Reception/Garden Room
- West Facing Garden
- Ground Floor WC, Utility Room & Garage Storage
- Double Driveway
- Brilliant Residential Location











**Harpers Property People**

80 Windsor Gardens, Bedlington, NE22 5SY

07813 673 606

ali@harpersproperty.com

<https://harpersproperty.com>

**Harpers** POWERED BY **exp** TM **UK**  
property people