



## Thornham Street, SE10

£300,000

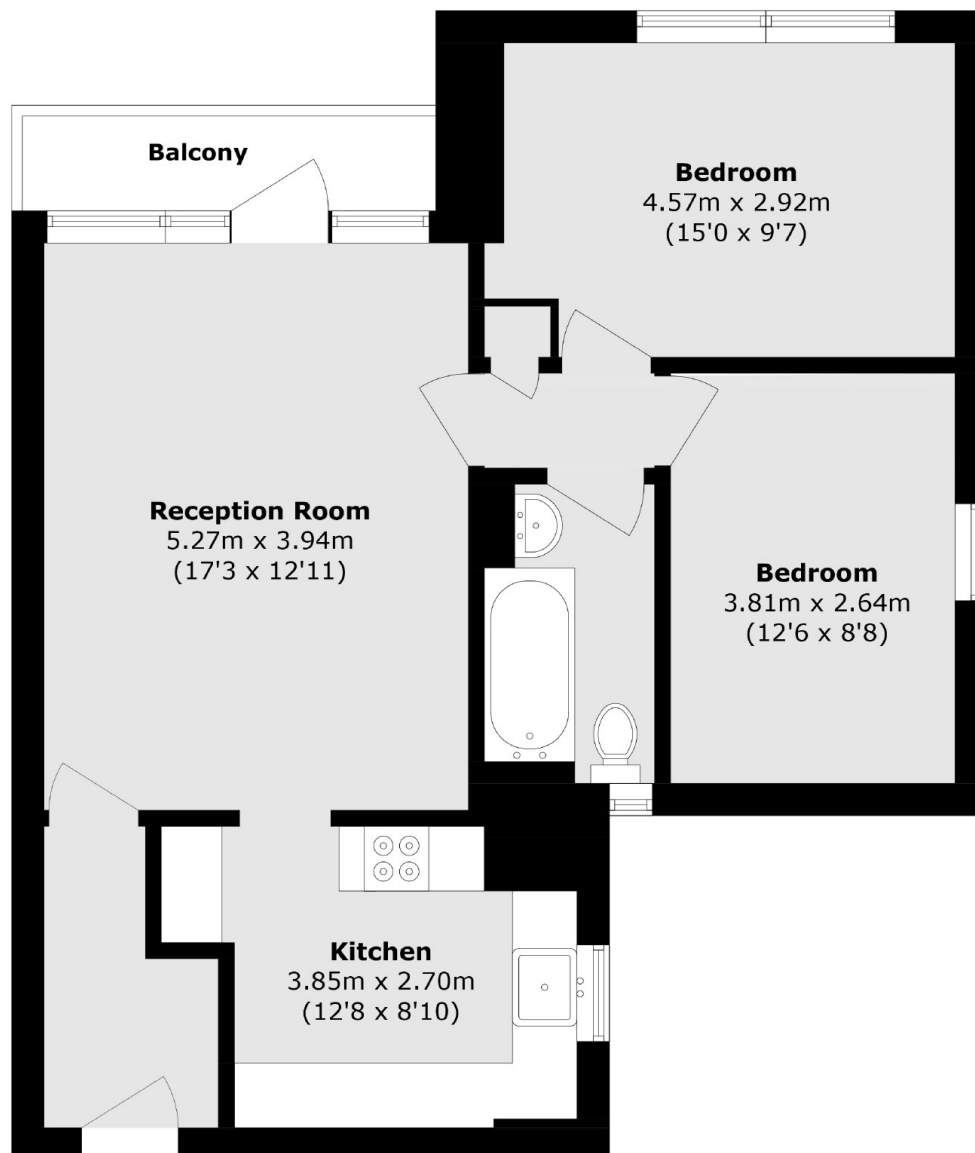
A well presented two bedroom purpose built flat in a sought after location. A viewing is highly recommended.

Located in the heart of Greenwich for independent shops, bars and restaurants, Greenwich Mainline and DLR Station is a short walk away providing direct connections to Canary Wharf, Bank, London Bridge, Cannon Street and Kings Cross. While the Greenwich Park and Greenwich Market are both within easy reach.

### Features

- Two Bedrooms
- Sought After Location
- Lift & Stairs access
- Ideal First Purchase
- Purpose Built
- Long Lease

Thornham Street,  
London, SE10



Total area (approx.): 66.7 sq. m (717.9 sq. ft)

Balcony area (approx.): 3.5 sq. m (37.6 sq. ft)