



STEPHENSON BROWNE

**Nantwich Road, Crewe,  
CW2 6PF**

CW2 6PF



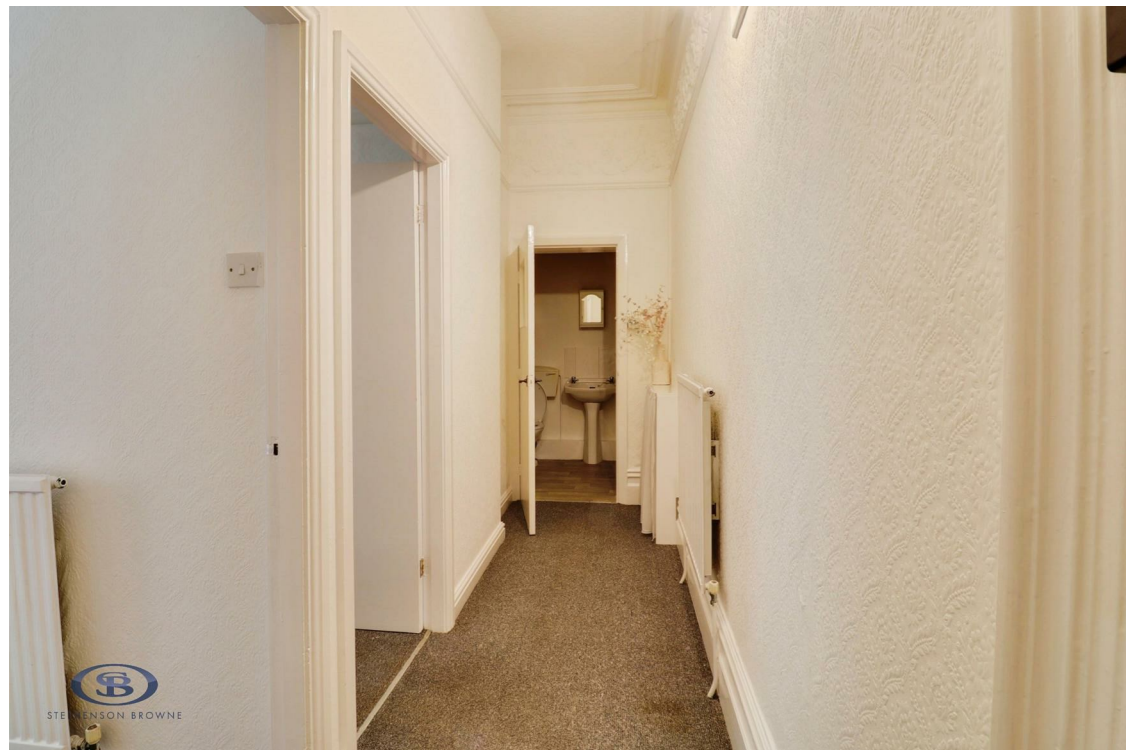
**£425 PCM**

## Description

LOW DEPOSIT OPTION AVAILABLE!!

SINGLE OCCUPANCY ONLY. An unfurnished one bedroom ground floor flat close to local amenities. Comprising large communal hall, internal entrance hall, single bedroom, lounge and a bathroom. GCH system double glazing. Great economical accommodation!

Sorry no pets as it's stated in the lease agreement they are not allowed.



### How does Reposit work?



**Choose.**

Ask us about Reposit instead of a traditional cash deposit.



**Sign up & pay.**

You will receive an email to sign up and pay the Reposit fee on the Reposit platform.



**Move in.**

Enjoy living deposit-free in your new home!



**Check out.**

No waiting for your deposit back! Easily settle any amounts due, or raise a dispute via Reposit.



# Reposit

## Rent without a deposit

## Viewing

Please contact our office using the details provided on the final page if you are interested in booking a viewing or require further information.

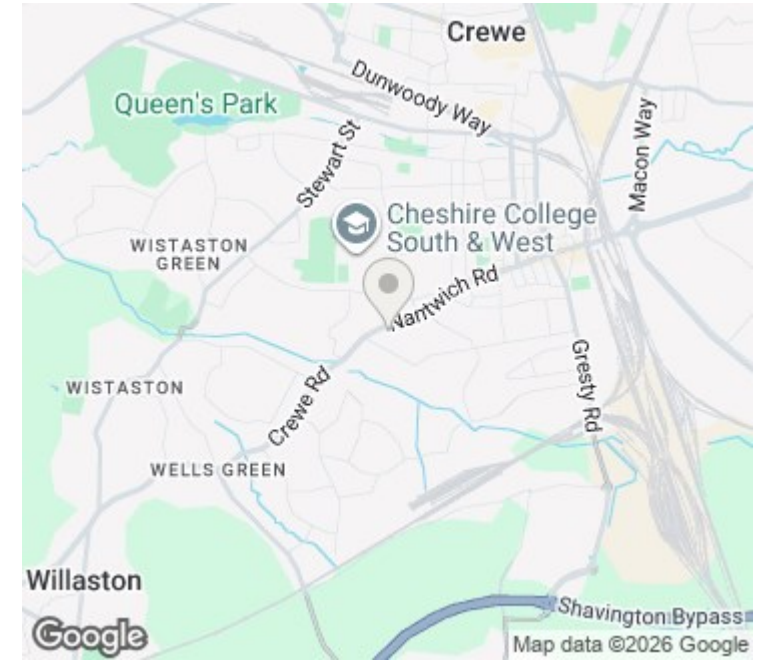
# Floorplans

## GROUND FLOOR



Whilst every attempt has been made to ensure the accuracy of the floorplan contained here, measurements of doors, windows, rooms and any other items are approximate and no responsibility is taken for any error, omission or mis-statement. This plan is for illustrative purposes only and should be used as such by any prospective purchaser. The services, systems and appliances shown have not been tested and no guarantee as to their operability or efficiency can be given.  
Made with Metroplex ©2025

# Area Map



Energy Efficiency Rating		Current	Potential
Very energy efficient - lower running costs			
(92 plus) A			
(81-91) B			
(69-80) C			
(55-68) D			
(39-54) E			
(21-38) F			
(1-20) G			
Not energy efficient - higher running costs			
<b>England &amp; Wales</b>	EU Directive	2002/91/EC	

Environmental Impact (CO <sub>2</sub> ) Rating		Current	Potential
Very environmentally friendly - lower CO <sub>2</sub> emissions			
(92 plus) A			
(81-91) B			
(69-80) C			
(55-68) D			
(39-54) E			
(21-38) F			
(1-20) G			
Not environmentally friendly - higher CO <sub>2</sub> emissions			
<b>England &amp; Wales</b>	EU Directive	2002/91/EC	

NOTICE: Stephenson Browne for themselves and for the vendors or lessors of this property whose agents they are give notice that: (1) the particulars are set out as a general guideline only for the guidance of intending purchasers or lessees, and do not constitute, nor constitute part of, an offer or contract; (2) all descriptions, dimensions, references to condition and necessary permissions for use and occupation, and other details are given in good faith and are believed to be correct but any intending purchasers or tenants should not rely on them as statements or representations of fact but must satisfy themselves by inspection or otherwise as to the correctness of each theme; (3) no person in the employment of Stephenson Browne has any authority to make representation or warranty whatever in relation to this property. (4) fixtures & fittings are subject to a formal list supplied by the vendors solicitors. **Referring to:** Move with Us Ltd **Average Fee:** £123.64

**T: 01270 252251 E: crewelettings@stephensonbrowne.co.uk**

[www.stephensonbrowne.co.uk](http://www.stephensonbrowne.co.uk)