



Lincoln Avenue, TW2

£865,000

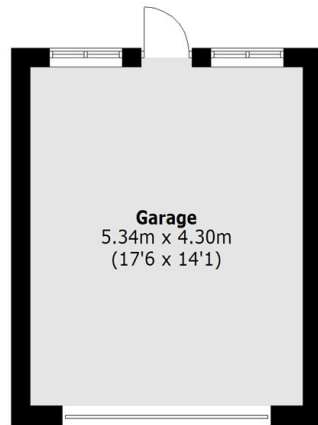
This beautiful four bedroom home is perfectly arranged over three floors. The property comes with two reception rooms and a modern kitchen with bi-folding doors which lead out onto a patio garden. Further benefits include three double bedrooms with a further single, three bathrooms, a private driveway and a double garage.

Lincoln Avenue is a fantastic residential street in a popular area of Twickenham. The property is close to Kneller Gardens Park, the River Thames and Whitton mainline station with its fast trains into Waterloo. There are excellent state and private schools nearby (e.g. Waldegrave Girls, Archdeacon, St James and The Mall), two royal parks and many pleasant, green open spaces.

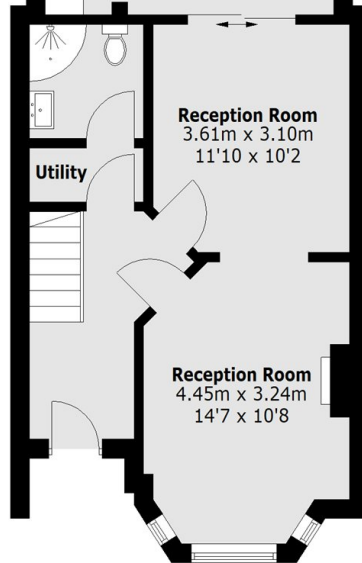
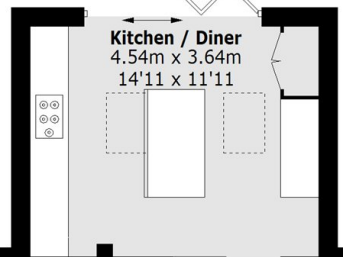
Features

- Four Bedrooms
- Three Bathrooms
- Modern Separate Kitchen
- Private Garden
- Off-Street Parking
- Double Garage

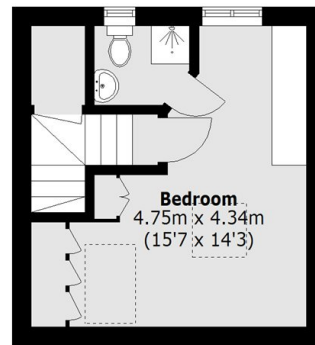
Lincoln Avenue, Twickenham, TW2



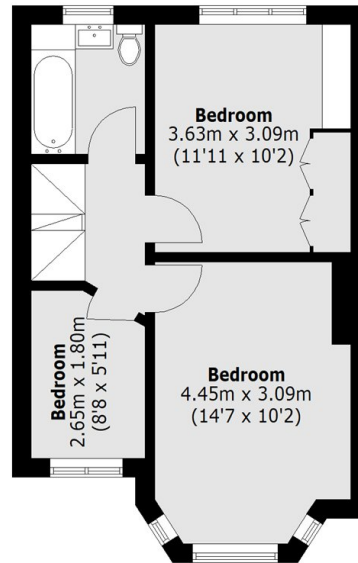
(Not Shown In Actual
Location / Orientation)



Ground Floor



Second Floor



First Floor

Total area (approx.): 114.2 sq. m (1,229.2 sq. ft)
Garage area: 23.1 sq. m (248.6 sq. ft)