



## Gatehouse Close, TW15

£275,000

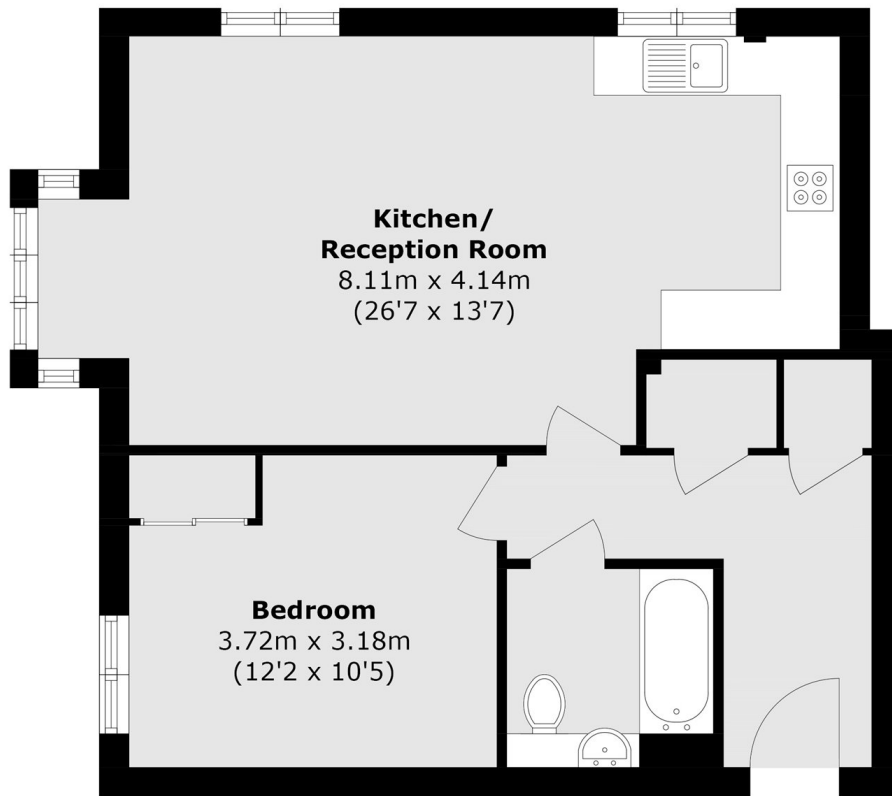
An modern first floor apartment boasting 600 plus sq.ft of beautifully designed space, featuring a sleek open-plan kitchen and reception area that needs to be seen to be appreciated. This is refined living at its finest, schedule your viewing before it's gone.

Maple House is a fantastic location found just off of Feltham Hill Road. With easy access to the M3 motorway and Ashford station just over a mile away.

### Features

- Built in 2021
- First Floor Apartment
- One Bedroom
- Modern Finish
- Allocated Parking
- Chain Free

# Gatehouse Close, ASHFORD, TW15



Total area (approx.): 56.0 sq. m (602.7 sq. ft)