



The Orchard Wetherby Road, Sicklinghall

Wetherby

Guide Price £1,395,000



MYRINGS



The Orchard Wetherby Road

Sicklinghall, Wetherby

This spacious and beautifully appointed family home offers a seamless blend of modern luxury and traditional charm, spanning approximately 3,070 square feet, excluding the double garage. Designed to accommodate a growing family, the property is filled with features that cater to both comfort and practicality.

Council Tax band: G

Tenure: Freehold

- STUNNING GARDENS
- FOUR BEDROOM FAMILY HOME
- VILLAGE LOCATION
- DOUBLE GARAGE
- DRIVEWAY PARKING FOR NUMEROUS VEHICLES

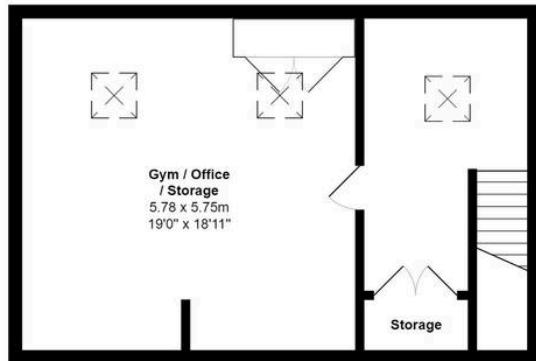


MYRINGS

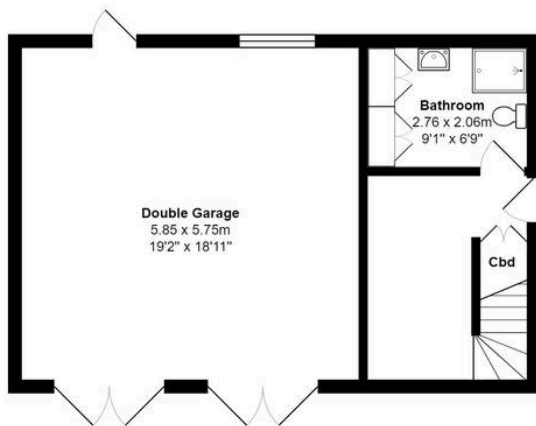


All measurements are approximate and for display purposes only.

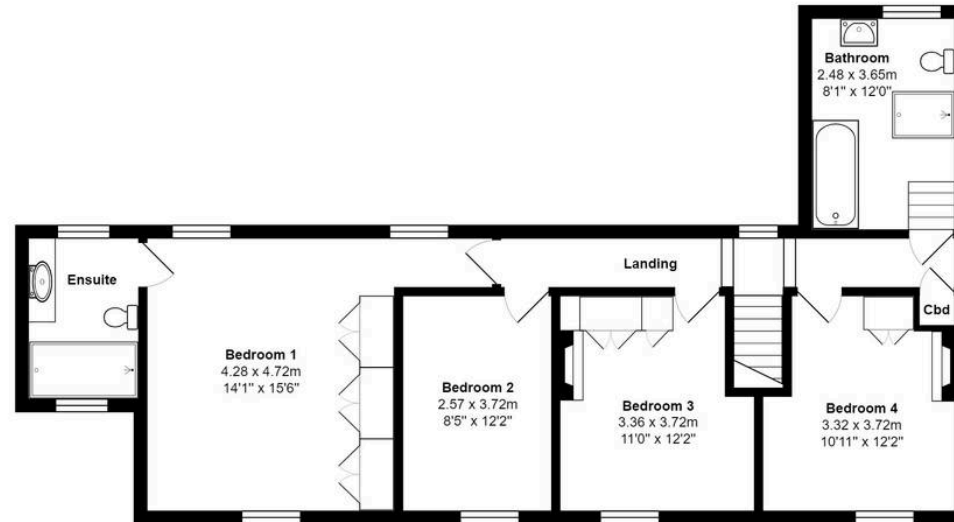
Total Area: 285.2 m² ... 3070 ft² (excluding double garage)



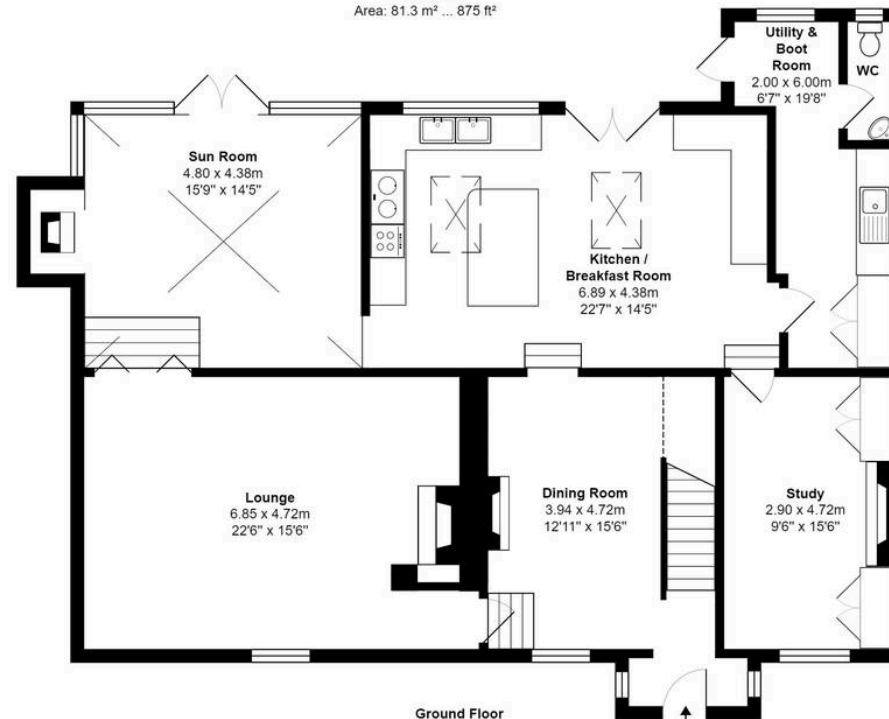
First Floor Annex
Area: 50.4 m² ... 543 ft²



Ground Floor
Area: 15.9 m² ... 171 ft²



First Floor
Area: 81.3 m² ... 875 ft²



Ground Floor
Area: 137.6 m² ... 1481 ft²





Myrings Estate Agents

Myrings Estate Agents Ltd, 10 Princes Square - HG1 1LX

01423

566400

▪ enquiries@myringsestateagents.com ▪ <http://myringsestateagents.com/>

