

Flat 2, Kilpeacon House, 16 Grey Road

£550,000 Share of Freehold

Council Tax band: E

Tenure: Share of Freehold

EPC Energy Efficiency Rating: B

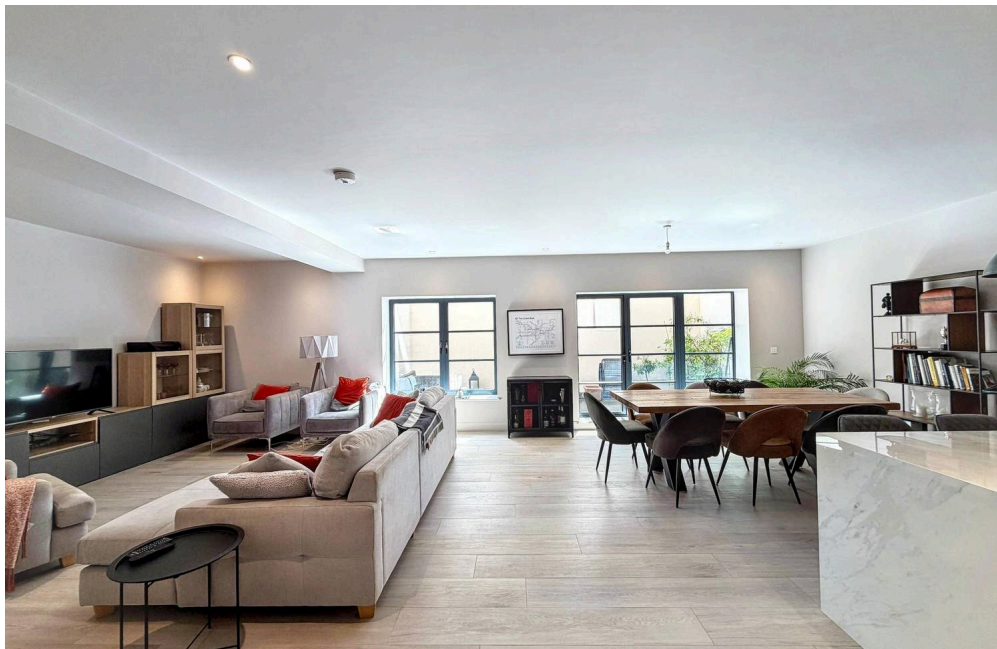
EPC Environmental Impact Rating:



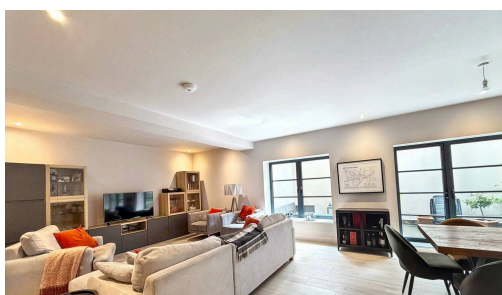
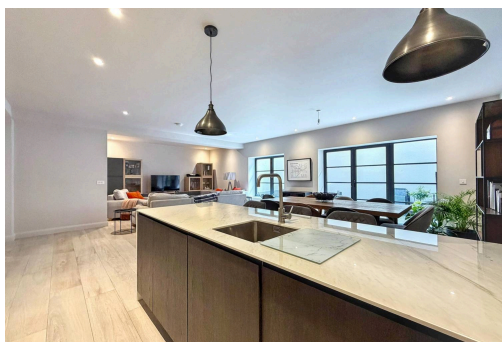
**HIBBERT
HOMES**

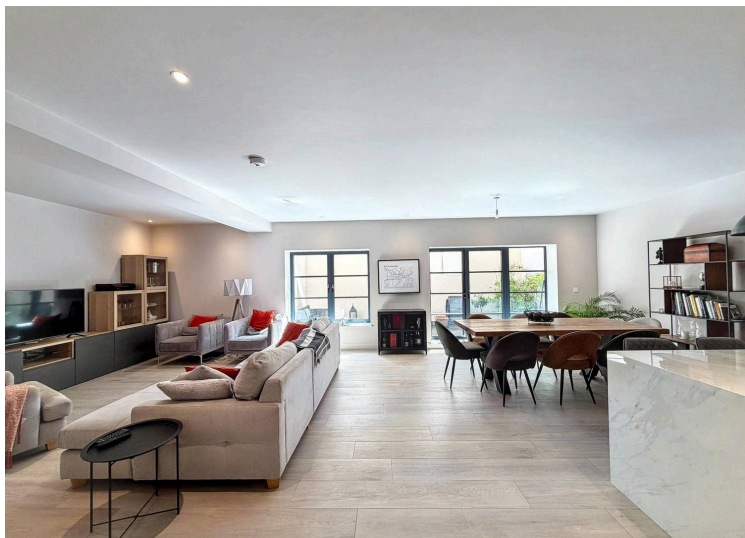
SALES & LETTINGS

Welcome to this spacious and stylish two bedroom apartment, set in a modern development in a fantastic location. With 1,086 square feet of thoughtfully designed living space, this lower ground floor home offers a bright and airy open plan living area, perfect for relaxing or entertaining friends. The kitchen is sleek and contemporary, while both bedrooms are generously sized and comfortable. You'll enjoy the convenience of lift access directly to your floor, as well as a secure parking space (ideal if you commute or just like peace of mind). The property is low maintenance, so you can spend more time enjoying your home and less time on chores. Whether you're looking for your first home, a smart investment, or a place to downsize in style, this flat ticks all the boxes. With local amenities, shops, and transport links just a short stroll away, you'll love the blend of comfort and convenience on offer here. Don't miss your chance to see this lovely flat for yourself - book your viewing today and discover how easy modern living can be.



- › Modern Development
- › Great Location
- › Two Bedrooms
- › Lower Ground Floor
- › Lift Access
- › Private Patio
- › 1086 Sqft
- › Secure Parking Space
- › Low Maintenance
- › Large Open Plan Living Space





Approx Gross Floor Area = 1086 Sq. Feet
= 100.9 Sq. Metres



You can include any text here. The text can be modified upon generating your brochure.

