



JOWEBSTER

*Albion Riverside
Battersea, SW11*



Property Attributes

- Reception Room
- Open Plan Kitchen/ Dining Area
- Two Double Bedrooms
- Master En Suite
- Separate Bathroom
- Underground Car Parking (Space for one car)
- 24/7 hour Security
- Swimming Pool
- Gymnasium



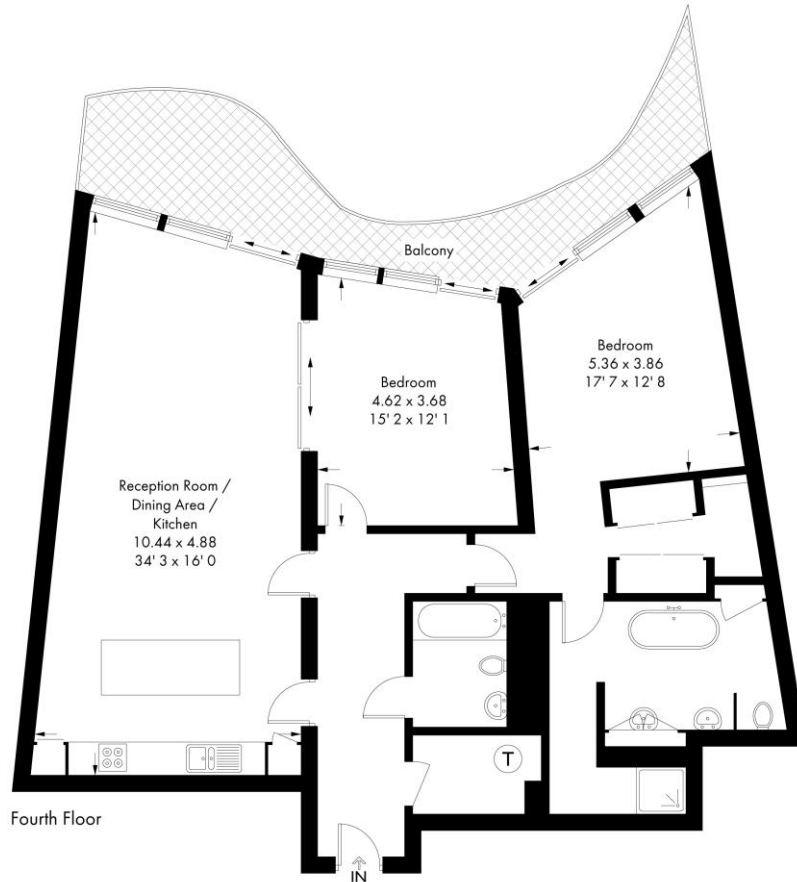
Terms

- Price: £1,725,000
- Borough: London Borough of Wandsworth
- Tenure: Leasehold approx. 976 years remaining
- Service Charge: £14,417 per annum
- Ground Rent: £300 per annum
- Council Tax Band: Band G



Albion

Approximate Gross Internal Area = 1369 sq ft / 127.2 sq m



+44 (0) 20 7349 7055
sales@jowebster.com

Misdescription Act

We wish to advise prospective purchasers that these sales particulars are believed to be correct, but their accuracy is in no way guaranteed, nor do they form any part of contract. We have not carried out a detailed survey nor tested the services, appliances or specific fittings. Measurements are approximate.

This plan is not to scale and must be used as layout guidance only. All measurements and areas are approximate and should not be relied upon to provide accurate information. This plan must not be relied upon when making property valuations, design considerations or any other such relevant decisions. We accept no responsibility or liability (whether in contract, tort or otherwise) in relation to any loss whatsoever arising from or in connection with any use of this plan or the adequacy, accuracy or completeness of it or any information within it.