



Bundocks Walk, London E3

£625,000 Leasehold







Description

Nestled within the culturally rich enclave of Hackney Wick and Fish Island, this beautifully appointed two-bedroom apartment occupies a prime position in the Outfall Building, offering an elevated perspective over one of east London's most exciting transformations. The development sits at the creative heart of the area, where industrial heritage meets contemporary urban living, with the iconic Olympic Stadium providing a dramatic backdrop.

The apartment welcomes you through an intelligently designed entrance hall featuring valuable double storage cupboards, setting the tone for the thoughtful layout throughout. Two generous double bedrooms provide flexible accommodation, with the principal bedroom benefiting from a private ensuite, while a sleek family bathroom serves the second bedroom and guests. The dual bathroom arrangement offers both convenience and privacy for modern living.

At the heart of the home lies an exceptional open-plan living space that captures the essence of contemporary urban life. The ultra-modern integrated kitchen flows seamlessly into an expansive living area, creating an ideal environment for both daily living and entertaining.

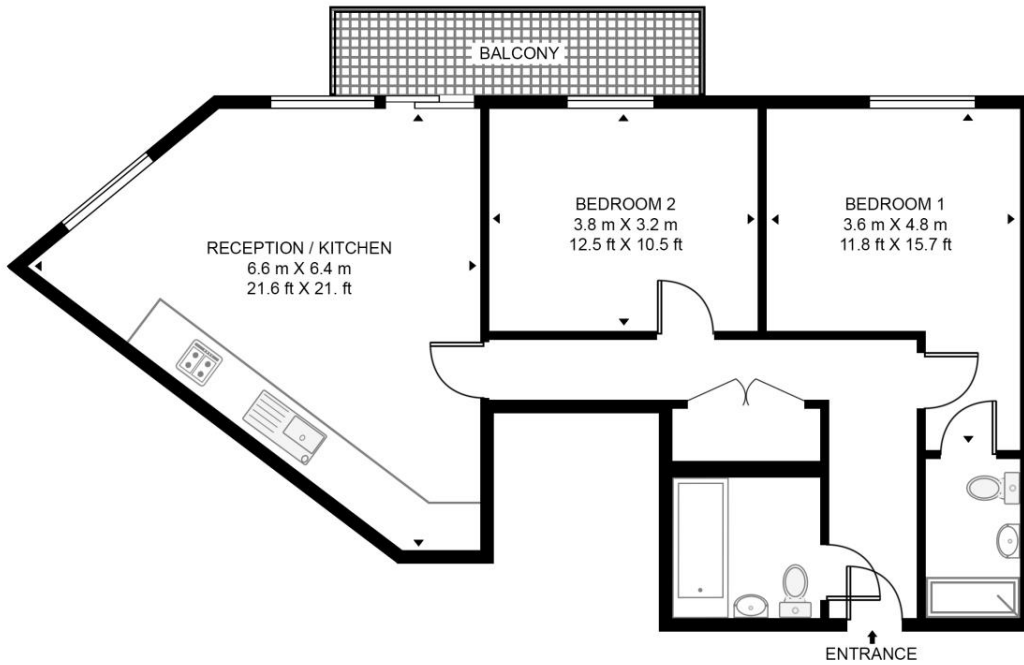
- Two double bedrooms
- Two bathrooms with ensuite
- Private balcony with views
- Open plan living space
- Integrated modern kitchen
- Double storage cupboard
- Communal landscaped gardens
- Olympic Stadium outlook
- Hackney Wick location
- 119-year lease remaining

Floorplan

819 sq ft | 76 sq m

OUTFALL BUILDING

APPROXIMATE GROSS INTERNAL FLOOR AREA 819 SQ.FT (76.1 SQ.M)



THIRD FLOOR



HDVA

This floor plan has been defined by the RICS Code of Measurement. This floor plan and all others are for approximate representative purposes only and upon usage is agreed to as such by the client.

WWW: hdvirtualart.com | TEL: 0203.974.1567 | EMAIL: info@hdvirtualart.com

Stratford
5 Station Street,
London E15 1DA
+4420 3147 1500
Lettingsstratford@eu.jll.com

Urban living, your way.

jll.co.uk/residential

© 2019 Jones Lang LaSalle IP, Inc. All rights reserved. All information contained herein is from sources deemed reliable; however, no representation or warranty is made to the accuracy thereof.

