



Park Hill, SW4

£6,750 Per calendar month

Dexters



Park Hill, SW4

This semi-detached, newly built mews home forms one of two rare and exciting opportunities to own a property expertly crafted from the ground up with contemporary elegance and thought-provoking functionality at the forefront of its design.

The accommodation has been artfully arranged over two floors to create beautifully balanced living and entertaining space with exceptionally high ceilings throughout.

A vast open plan reception room is situated on the lower level and includes a bespoke kitchen which features a range of integrated appliances and ample room to dine. A floor-to-ceiling window looks inwardly over a large lightwell whilst French doors open onto the lower terrace which leads to the garden. Over the remainder of this, and the upper floors there are three double bedrooms, three bathrooms and a utility area. The principal bedroom has a walk-through dressing room and en suite. Further benefits include an intercom system, security cameras, an air source heat pump and exceptional energy efficiency.

Park Hill is situated within the Abbeville Village, a highly desirable area renowned for its many boutique shops, bars and restaurants. Clapham Common along with its respective station, are just a stroll away.

Features

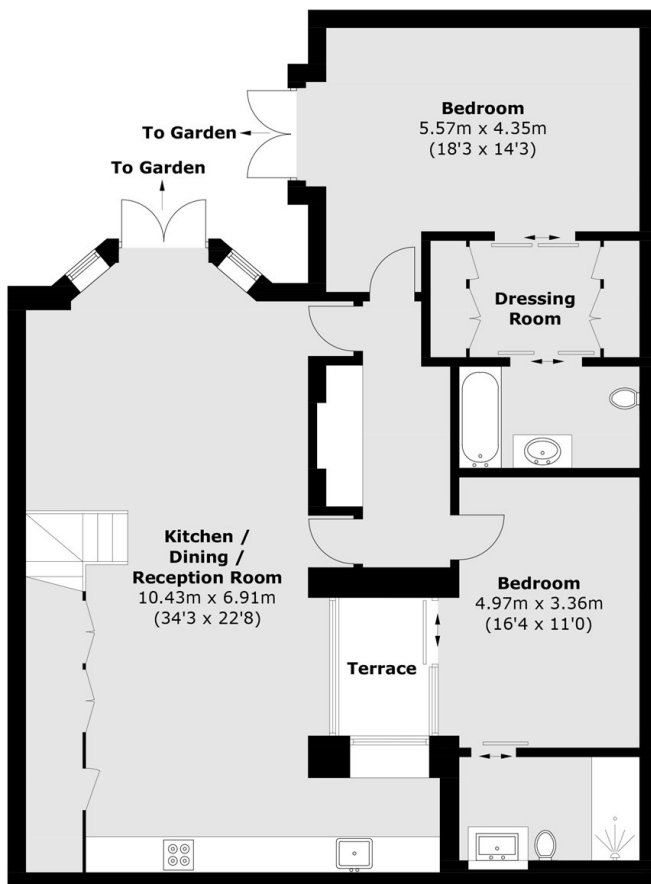
- Three Bedrooms
- Three Bathrooms
- Newly Refurbished
- Under Floor Heating
- Sonos Music System
- Private Garden



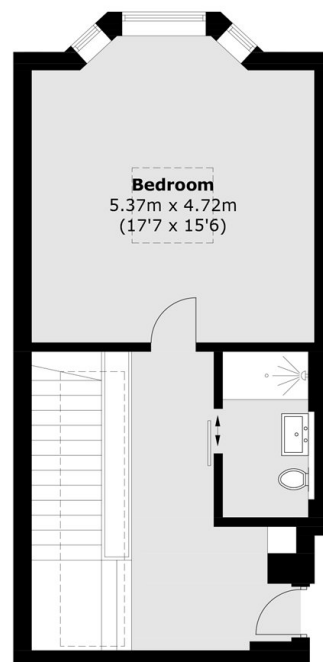




Park Hill, London, SW4



Lower Ground Floor



Ground Floor

Total area (approx.): 163.2 sq. m (1,756.7 sq. ft)
Terrace: 3.5 sq. m (37.7 sq. ft)