



35 Beachdale Close

, Wingate, TS28 5HH

£395,000

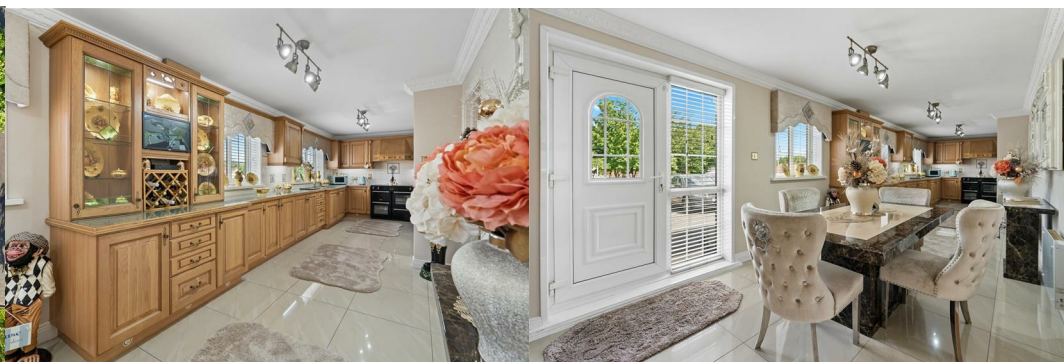


Settled on Beachdale Close, Station Town, Wingate, this stunning detached home offers an exceptional living experience. Originally four separate houses, this remarkable property has been thoughtfully combined to create a spacious and versatile family residence. With five generously sized bedrooms, it provides ample accommodation for families of all sizes.

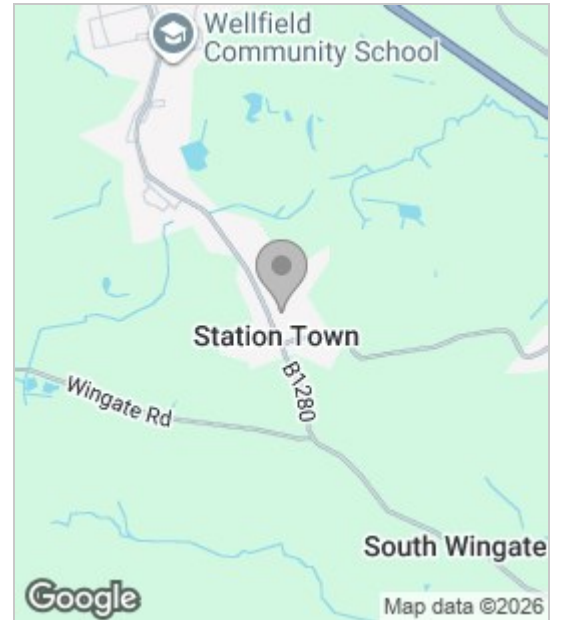
The property boasts three well-appointed reception rooms, perfect for entertaining guests or enjoying quiet family time, with an abundance of kitchen space, tiled floors & electric heating.

The layout is designed to maximise comfort and functionality, ensuring that every corner of the home is utilised to its fullest potential. Additionally, there are two modern bathrooms, catering to the needs of a busy household.

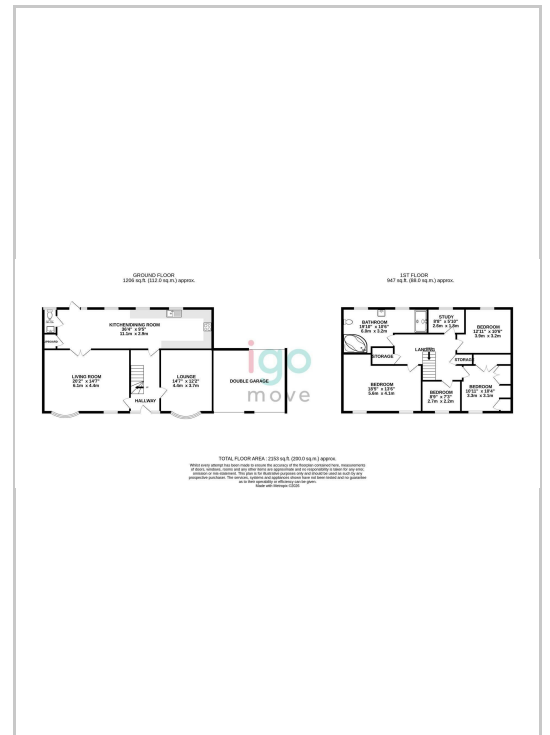
One of the standout features of this home is the extensive grounds, which offer a unique opportunity for parking. With space for up to 12 vehicles, including a drive-through garage, this property is ideal for car enthusiasts or those who frequently host visitors. Furthermore, the presence of two double garages adds to the convenience and versatility of the space.



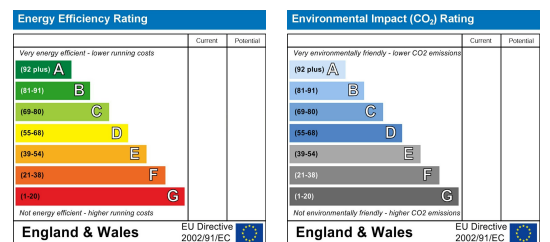
Area Map



Floor Plan



Energy Efficiency Graph



These particulars, whilst believed to be accurate are set out as a general outline only for guidance and do not constitute any part of an offer or contract. Intending purchasers should not rely on them as statements of representation of fact, but must satisfy themselves by inspection or otherwise as to their accuracy. No person in this firm's employment has the authority to make or give any representation or warranty in respect of the property.