

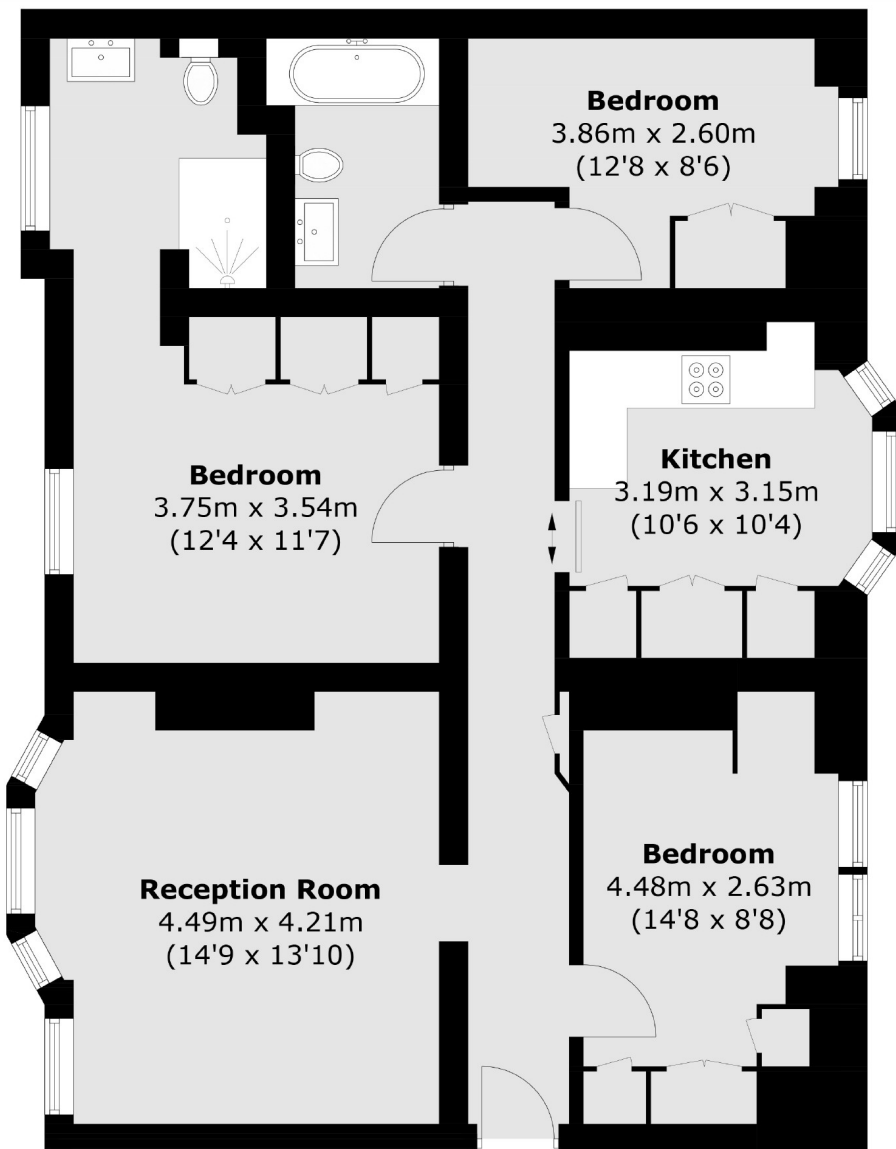


GILBERT STREET

MAYFAIR W1K

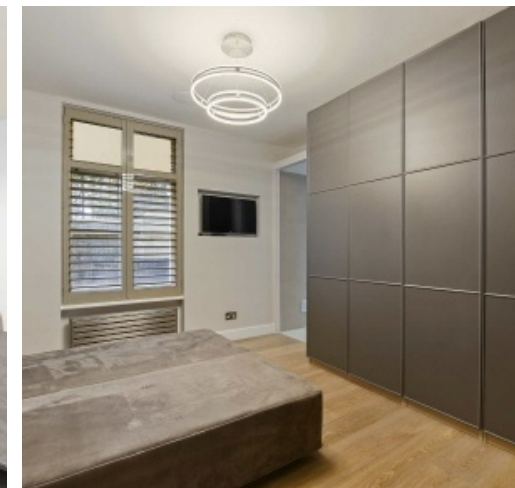
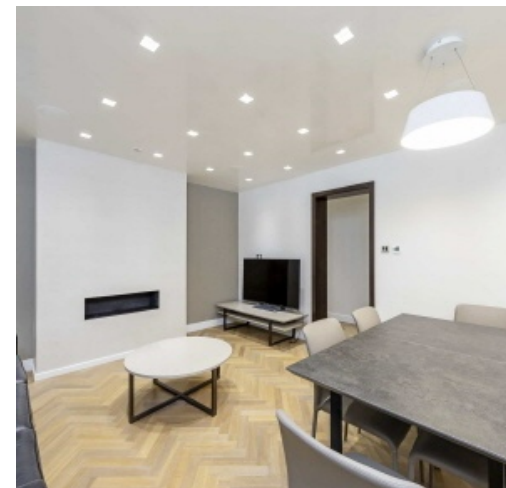


THIS THREE BEDROOM, TWO BATHROOM APARTMENT HAS UNDERGONE AN EXTENSIVE RENOVATION, LOCATED CLOSE TO BOND STREET STATION.



Lower Ground Floor

Total area (approx.): 90.9 sq. m (978.4 sq. ft)



The property includes two double bedrooms with bespoke built-in storage and third single bedroom/study. The main bedroom includes a luxury shower room with mood Lutron lighting and Grohe rainfall shower. There is a further luxury family bathroom.

Located in the northern part of Mayfair, transport links are around the corner at Bond Street underground station.

The reception room offers comfortable family dining and separate kitchen includes high specification Gaggenau appliances.

The apartment has hard wood flooring and quality furnishings installed throughout.

FEATURES

- Three Bedrooms
- Two Bathrooms
- Day Porter
- High Specification Renovation
- Separate Modern Kitchen
- Wooden Flooring

Price: £1,295 Per week

We aim to make our particulars both accurate and reliable. However they are not guaranteed; nor do they form part of an offer or contract. If you require clarification on any points then please contact us, especially if you're traveling some distance to view. Please note that appliances and heating systems have not been tested and therefore no warranties can be given as to their working order. Energy Rating: C



WETHERELL
MAYFAIR'S FINEST PROPERTIES

102 Mount Street • London • W1K 2TH
T: 020 7529 5588 E: rentals@wetherell.co.uk

wetherell.co.uk