

# Whitechapel High Street

London • • E1 7RA  
Per Month: £2,600 Per Month



coopers  
est 1986

# Whitechapel High Street

London • • E1 7RA

Located in the heart of Shoreditch, this property is a beautifully presented and spacious two double bedroom apartment. Situated on the third floor, the apartment comprises of a large living area, an open plan kitchen, two generously sized double bedrooms, and a fitted bathroom. The property also boasts a secure entry phone system and excellent transport links.

Positioned just moments away from Aldgate East tube station, Atlantis House is only a 10-minute walk to Liverpool Street station, providing a quick and convenient commute to the West End.

Available 12th June 2025

Available 12th June 2025

3rd Floor (no lift)

Wood flooring

Close to The City

Excellent transport links

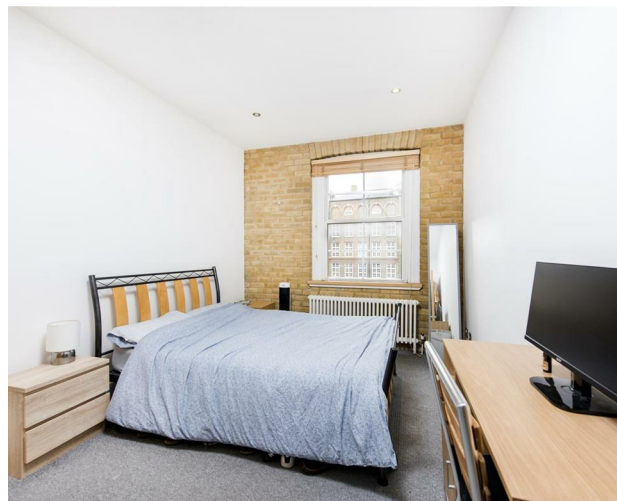
---

---

---

---

These particulars are intended as a guide and must not be relied upon as statements of fact. Your attention is drawn to the Important Notice on the last page.









### Schools:

A well presented large two double bedroom property in the heart of Shoreditch.



### Train:



### Car:

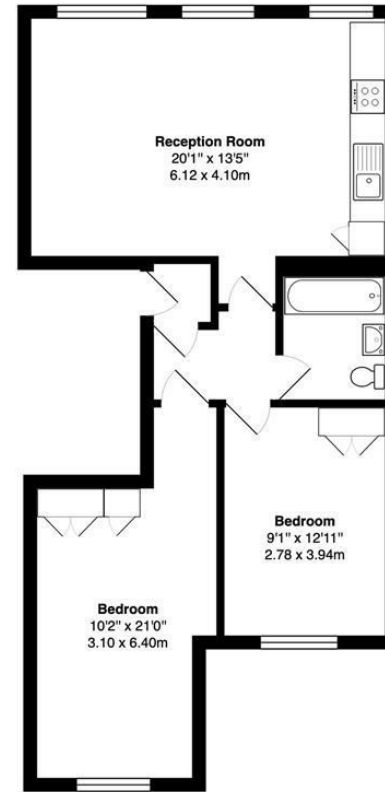
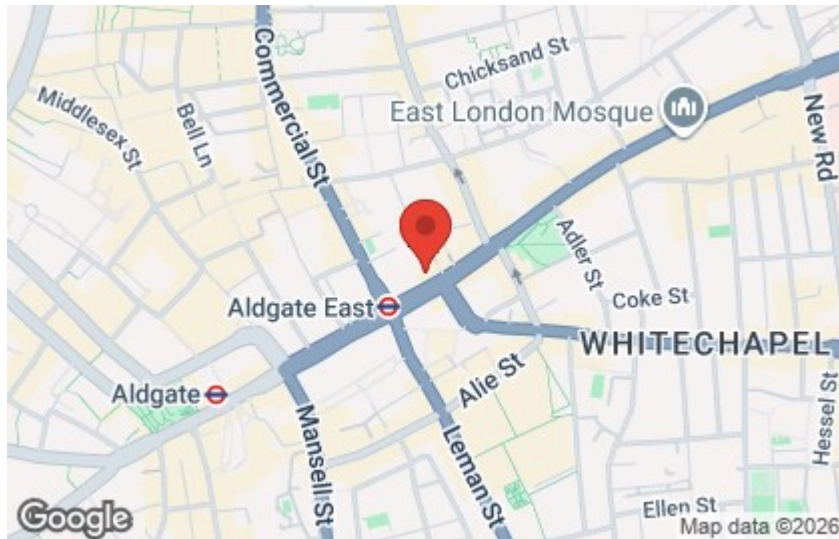
M4, A40, M25, M40



### Council Tax Band:

C

(Distances are straight line measurements from centre of postcode)



2nd floor

Atlantis House Whitechapel High Street E1

Total Area: 679 ft² ... 63.1 m²

All measurements are approximate and for identification guideline purposes only, not to scale.  
Complain with the RICS code of measuring practice

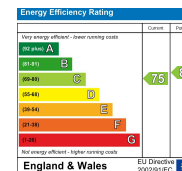
**coopers**  
est 1986

0207 580 9658

22 Cleveland Street, Fitzrovia,  
London, W1T 4JB

info@coopersonlondon.co.uk

CoopersResidential.co.uk



Important Notice: These particulars, whilst believed to be accurate are set out as a general outline only for guidance and do not constitute any part of an offer or contract. Intending purchasers should not rely on them as statements or representation of fact, but must satisfy themselves by inspection or otherwise has the authority to make or give any representation or warranty in respect of the property.