

Mornington Avenue, W14

£2,400 Per calendar month

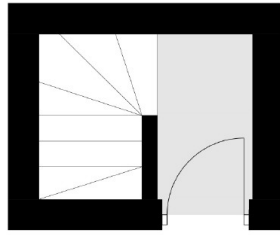
A smart and well laid out two bedroom apartment oozing lots of natural light throughout. This property is in lovely condition with a separate kitchen including high end appliances, an ultra modern bathroom and very good amount of storage throughout the flat.

Mornington Avenue is a popular, sought after residential road, located north of the A4 within 300 yards to West Kensington and the extensive facilities of Earls Court and Kensington High Street.

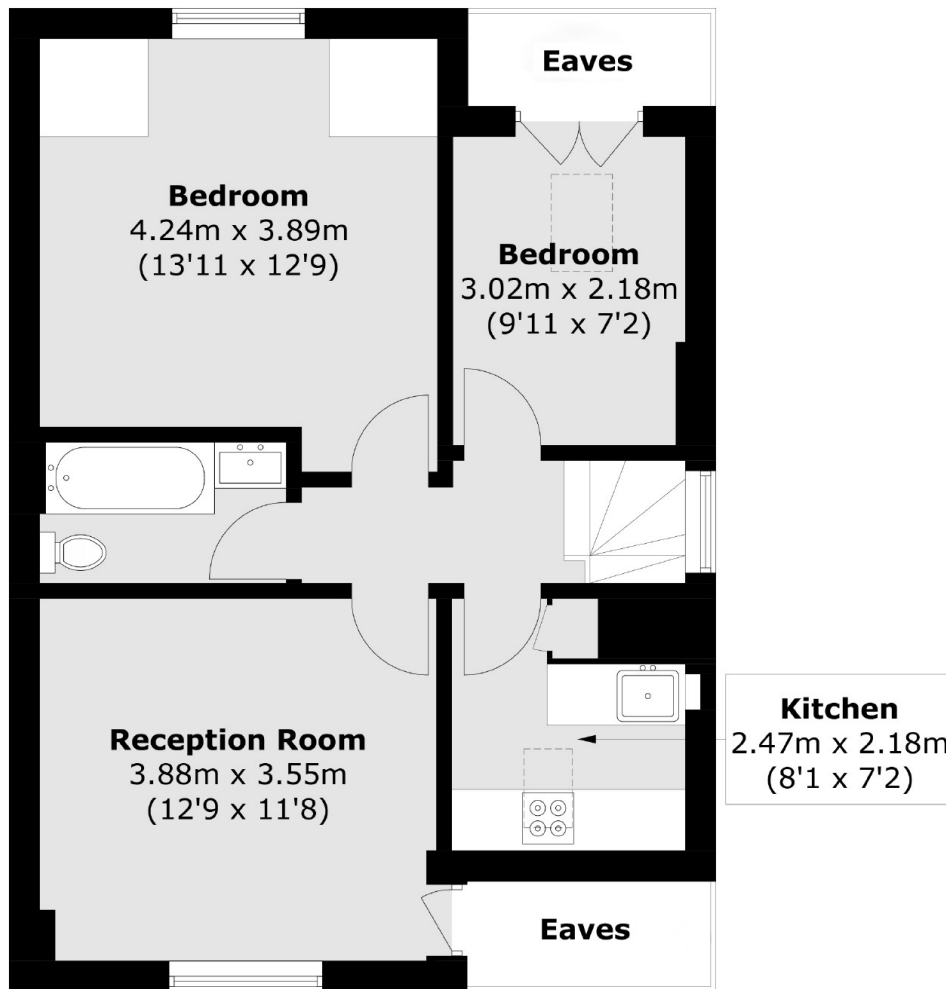
Features

- Split Level
- Wooden Floors
- Double Glazed Windows
- Great Location
- Two Bedrooms
- Top Floor

Mornington Avenue,
London, W14



Second Floor



Third Floor

Total area (approx.): 55.8 sq. m (600.6 sq. ft)
(Excluding Eaves)

Dexters

West Kensington
179-181 North End Road
London
W14 9NL
Lettings
020 7381 4133

Energy Rating: D. We aim to make our particulars both accurate and reliable. However they are not guaranteed; nor do they form part of an offer or contract. If you require clarification on any points then please contact us, especially if you're traveling some distance to view. Please note that appliances and heating systems have not been tested and therefore no warranties can be given as to their good working order.

 **RICS** | Regulated
Estate Agent
and Letting Agent

dexters.co.uk