



## Station Road, NW4

£650,000

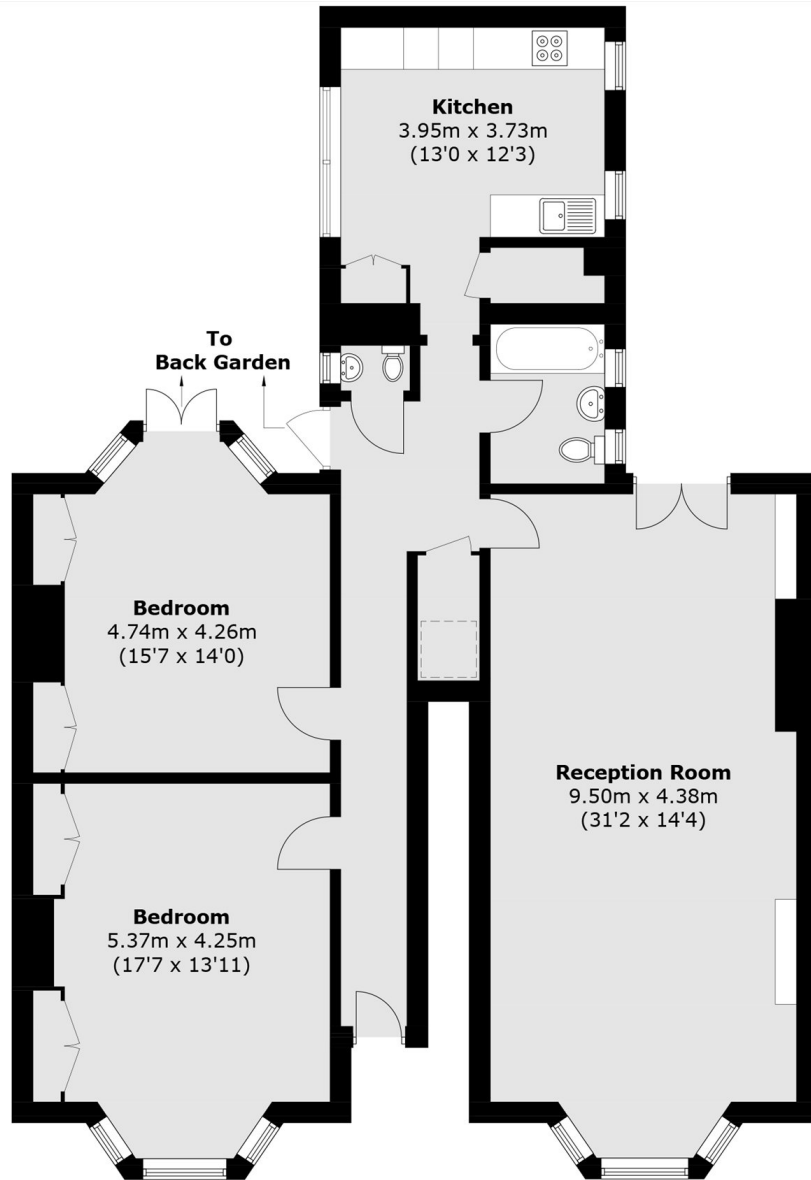
A very spacious two double bedroom ground floor flat located within this handsome Victorian house. This chain free home comes with a private terrace, large private garden, private parking and is immaculate condition throughout.

This rarely available home is conveniently located within close access of Hendon Central underground station (Northern Line) and Hendon Thameslink station. Access to Brent Cross Shopping Centre and Arterial Links.

### Features

- Garden Flat
- 1259 Sq Feet
- Victorian Conversion
- Extremely Spacious
- Large Private Garden
- Private Parking

Station Road,  
Hendon, NW4



**Ground Floor**

Total area (approx.): 117.0 sq. m (1,259.4 sq. ft)