



TO
LET

14, Stornoway, Hemel Hempstead

Guide Price £250,000 | £1,350 pcm

squire | estates

14, Stornoway

Hemel Hempstead, Hemel Hempstead

Spacious first-floor two-bed flat with modern kitchen, stylish bathroom, communal garden, and great transport links. Close to shops and schools. Ideal for professionals or small families.

Council Tax band: B

Tenure: Leasehold

EPC Energy Efficiency Rating: D

EPC Environmental Impact Rating: D

- Two Bedroom (One Double & One Single)
- Modern Kitchen Suite Incl. Appliances
- Contemporary Shower Room
- Gas Central Heating & Double Glazing
- Close to local shops
- First Floor Apartment



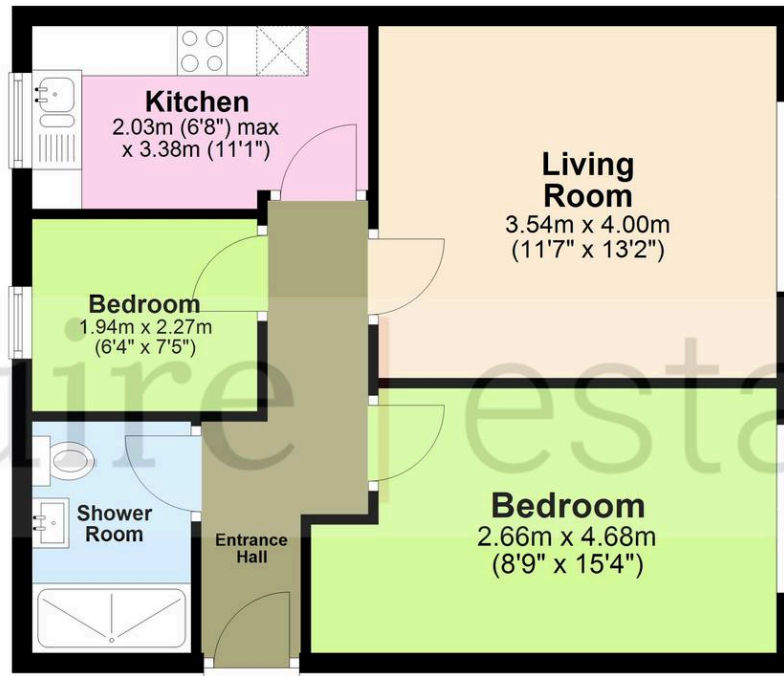
squire | estates

67 Marlowes, Hemel Hempstead
Hertfordshire HP1 1LE
t. 01442 233533

www.squireestates.co.uk

Floor Plan

Approx. 47.3 sq. metres (509.0 sq. feet)



Total area: approx. 47.3 sq. metres (509.0 sq. feet)

The Floor Plan is not to Scale and measurements and areas shown are approximate and therefore should be used for illustrative purposes only. The plan has been prepared with due diligence and whilst we have confidence in the information produced it should not be relied upon. Maximum lengths and widths are represented on the plan. If there are any aspects of particular importance, you should carry out or commission your own inspection of the property. Copyright © SKMSTUDIO
Plan produced using PlanUp.□