

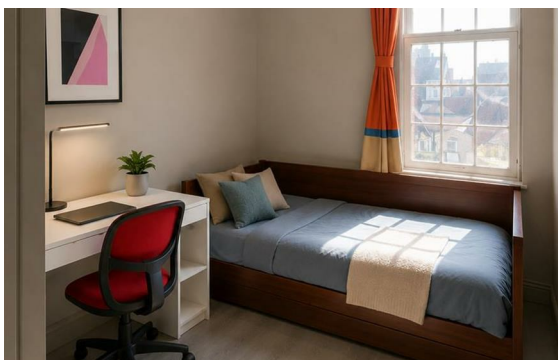


**Finchley Road, Finchley, London, NW3**

Rent £820 Per Month

3 Bed | 2 Bath | 1 Reception

*Please call us on 020 7724 2233 or email us [info@newingtonstates.com](mailto:info@newingtonstates.com) to book a viewing.*



60 Upper Montagu Street

London

W1H 1SN

020 7724 2233

[info@newingtonstates.com](mailto:info@newingtonstates.com)

A beautifully presented three-bedroom, three-bathroom apartment offering bright and spacious accommodation with contemporary interiors throughout. The property features a stylish open-plan kitchen and dining area with modern fitted units and integrated appliances, a generous reception room with large sash windows allowing excellent natural light, and well-proportioned bedrooms with elegant furnishings and fitted storage. The bathrooms are finished to a modern standard with sleek fittings and walk-in showers, creating a comfortable and practical living space ideal for sharers or families.

Ideally located close to Finchley Road, residents benefit from an excellent selection of shopping facilities, well-known retail brands, cafés, bars, restaurants, education and healthcare amenities. Superb transport links include Finchley Road & Frognal Overground (0.2 miles), Finchley Road Underground Station serving the Jubilee and Metropolitan Lines (0.5 miles), and Hampstead Underground Station on the Northern Line (0.7 miles).

## Energy Efficiency Rating: E

Agents Note: Whilst every care has been taken to prepare these particulars, they are for guidance purposes only. All measurements are approximate and are for general guidance purposes only and whilst every care has been taken to ensure their accuracy, they should not be relied upon and potential buyers/tenants are advised to recheck the measurements.

<http://www.newingtonstates.com>