



Bulstrode Avenue, TW3

£749,950

We are pleased to present this exceptional and beautifully maintained double fronted semi-detached home, set on a highly desirable residential road. Extending to over 1,585 sq ft of well proportioned living space plus a substantial outbuilding of more than 320 sq ft this impressive five bedroom, two bathroom property is arranged over two floors and offers further potential to extend into the loft (STPP).

Bulstrode Avenue is a sought after location in the heart of Hounslow, ideally positioned just moments from Hounslow Central Underground Station (Piccadilly Line), providing excellent connections to Heathrow Airport and central London. The property is also within easy walking distance of the High Street, local parks, and a range of amenities. The highly reputable and outstanding St. Mark's Catholic School and Wellington Primary School are a short walk away.

Features

- Double Fronted House
- Five Bedrooms
- Driveway for Several Cars
- Large Garden & Outbuilding
- Exceptional Plot Size
- South-West Facing Garden



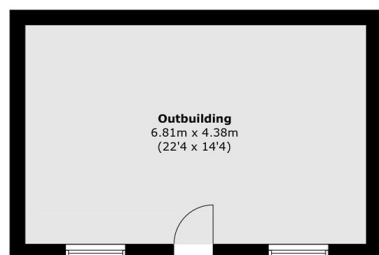
Bulstrode Avenue, TW3

A standout feature is the generous south-west facing garden, perfect for outdoor entertaining, along with off street parking for multiple cars. The property opens into a welcoming entrance hallway, with a study to the left and a spacious reception/dining room to the right, enhanced by an elegant bay window. To the rear, a high specification kitchen flows seamlessly onto a beautifully landscaped garden.

The ground floor also benefits from a large principal bedroom with en-suite shower room, as well as a separate guest WC. Upstairs, there are four well proportioned bedrooms and a modern family bathroom.

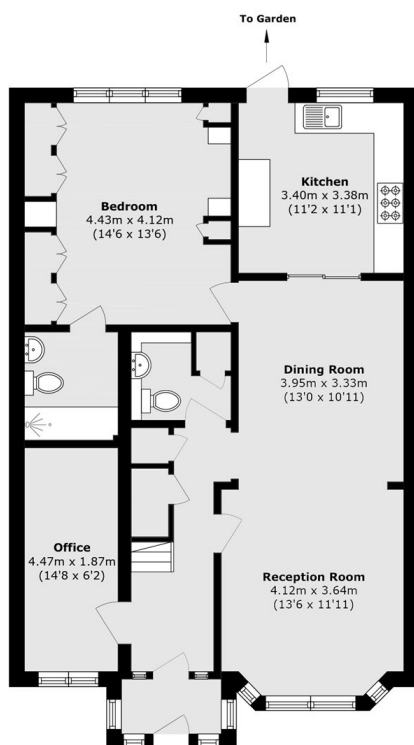


Bulstrode Avenue, Hounslow, TW3

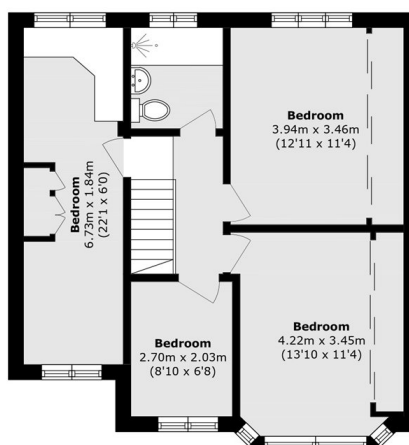


Outbuilding
6.81m x 4.38m
(22'4 x 14'4)

Ground Floor



Ground Floor



First Floor

Total area (approx.): 147.4 sq. m (1586.6 sq. ft)
Outbuilding area (approx.): 29.8 sq. m (320.7 sq. ft)