

sansome
& george



15 Crookham Close, Tadley

OIEO £210,000

15 Crookham Close

Tadley

Sansome & George - Available with no onward chain is this modern 1 Bedroom terraced house in a sought-after location in Tadley. This property boasts one spacious bedroom, ideal for a young professional or couple. The reception room is bright and inviting, perfect for relaxing or entertaining guests. The property features doors leading out to the garden, perfect for enjoying your morning coffee or hosting summer BBQs. Residents will benefit from allocated parking, ensuring convenience and peace of mind. This property is an ideal starter home or investment opportunity, offering a comfortable and contemporary living space. With its prime location, close to local amenities and excellent transport links, this property is sure to attract a lot of interest. Don't miss out on the chance to make this wonderful property your new home. Contact us today to arrange a viewing.

EPC EER - D

Local Authority - Basingstoke & Deane

Council Tax Band - B

Council Tax band: B

Tenure: Freehold

EPC Energy Efficiency Rating: C

EPC Environmental Impact Rating: C







15 Crookham Close

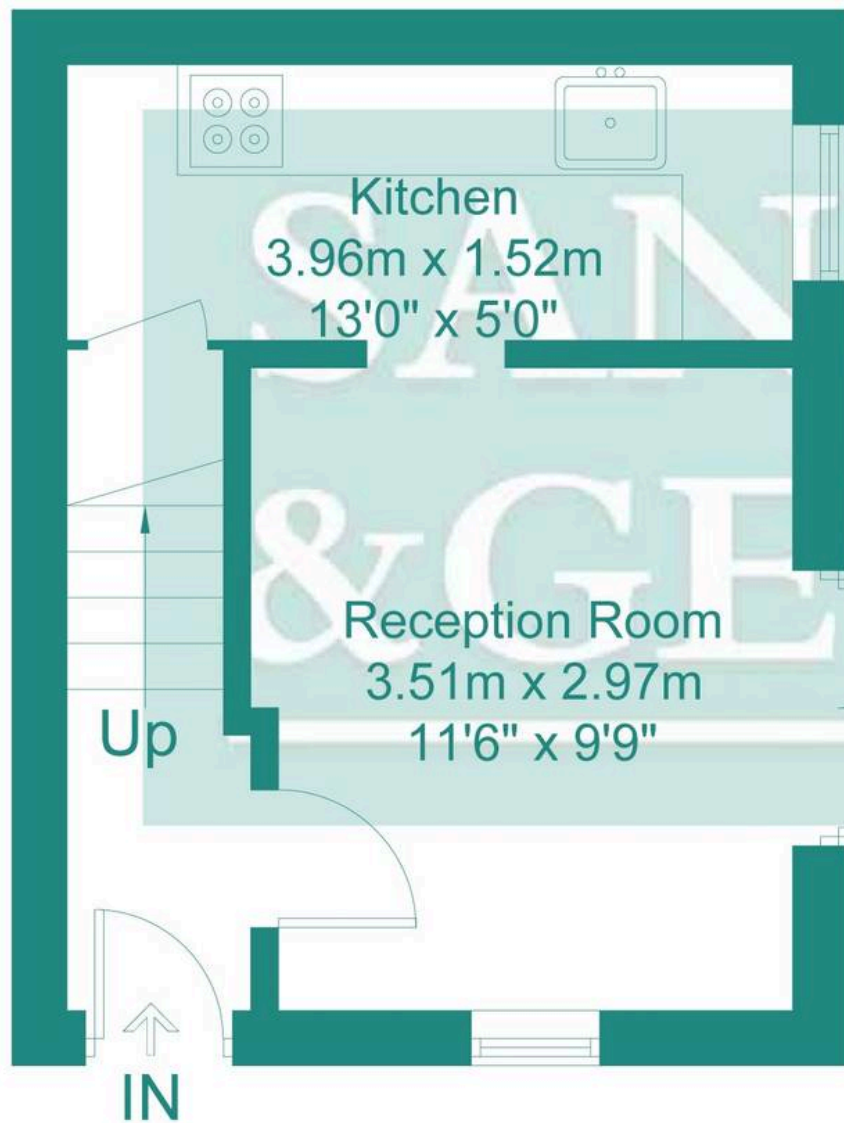
Tadley

- 1 Bedroom House
- Entrance Hall
- Lounge with doors to garden
- Fitted kitchen
- Bedroom
- Bathroom
- Garden
- No onward chain



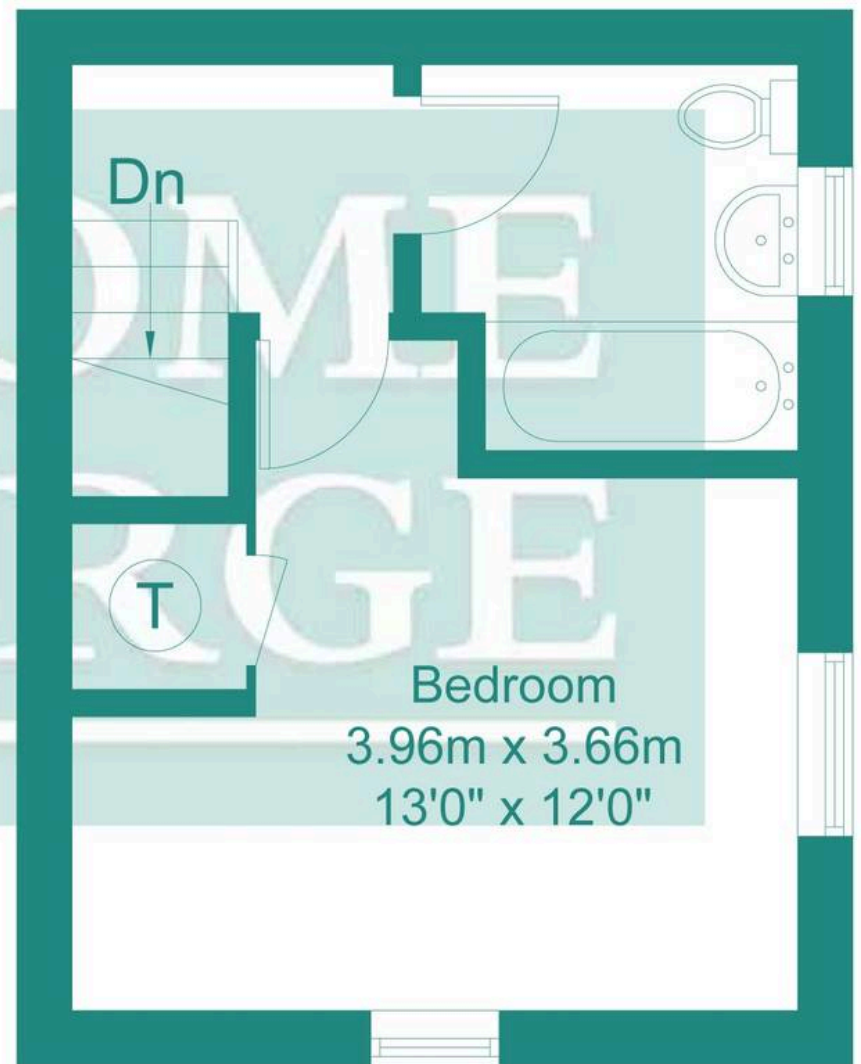
**sansome
& george**





Ground Floor

Approximate Gross Internal Area
20.7 sq m / 223 sq ft



First Floor

Approximate Gross Internal Area
20.3 sq m / 218 sq ft

This plan is for layout guidance only. Not drawn to scale unless stated. Windows and door openings are approximate. Whilst every care is taken in the preparation of this plan, please check all dimensions, shapes and compass bearings before making any decisions reliant upon them. (ID273005)





Sansome & George Tadley Office

Sansome & George, Emit House - RG26 4ET

0118 981 0022 • tadley@sansomeandgeorge.co.uk • www.sansomeandgeorge.co.uk