



Horatio Apartments, 2 Graphite Square

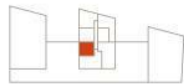
, LONDON SE11 5EE

- Vauxhall/Nine Elms Station
- Landscaped podium garden with seating areas and children's play space
- Secure entry system and lift access
- 24-hour concierge service
- Beautifully designed communal public spaces
- EPC-B

£2,850 Per Month



Local Authority
 Council Tax Band **New Build**
 EPC Rating **B**



Levels 6-11



| | | | | |
|-----------------------|-------------|---------------|---------------|--|
| LIVING/KITCHEN/DINING | 21'1 x 13'5 | 6.42m x 4.13m | INTERNAL | 54m ² /578ft ² |
| BEDROOM | 18'3 x 11'1 | 5.57m x 3.39m | WINTER GARDEN | 5m ² /55ft ² |
| | | | TOTAL | 59m²/633ft² |

London Office Office
 Spaces Victoria, 25 Wilton Road, Pimlico,
 London, SW1V 1LW

Contact
 020 3084 3094
 XL@londonvictoriagroups.co.uk
 www.londonvictoriagroups.co.uk

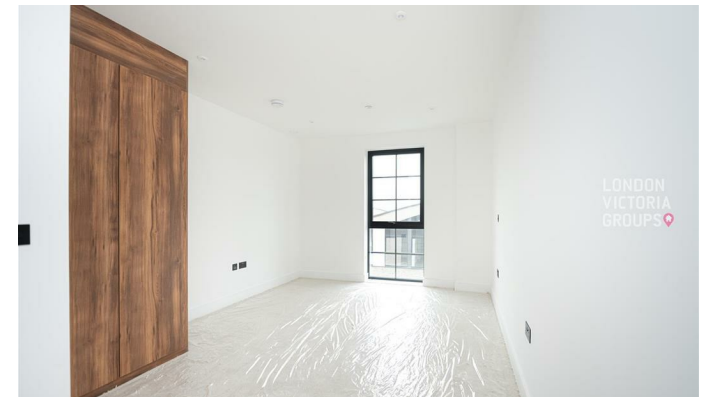
Agents Note: Whilst every care has been taken to prepare these particulars, they are for guidance purposes only. All measurements are approximate and for general guidance purposes only and whilst every care has been taken to ensure accuracy, they should not be relied upon and potential buyers/tenants are advised to recheck the measurements.



LONDON
 VICTORIA
 GROUPS



LONDON
 VICTORIA
 GROUPS



LONDON
 VICTORIA
 GROUPS