



Robinson House, Selsey Street, London, E14 7AZ

£2,500 Per Calendar Month





£2,500 Per Calendar Month

Robinson House, Selsey Street

London, E14 7AZ

- Three Bedrooms
- Great Location
- Available Immediately
- Split Across Two Floors
- Well Presented

Nestled in the charming area of Selsey Street, this delightful three bedroom flat offers a perfect blend of comfort and convenience. With three well-proportioned bedrooms, this property is ideal for families or professionals seeking a spacious living environment. The flat features a welcoming reception room, providing a lovely space for relaxation or entertaining guests.

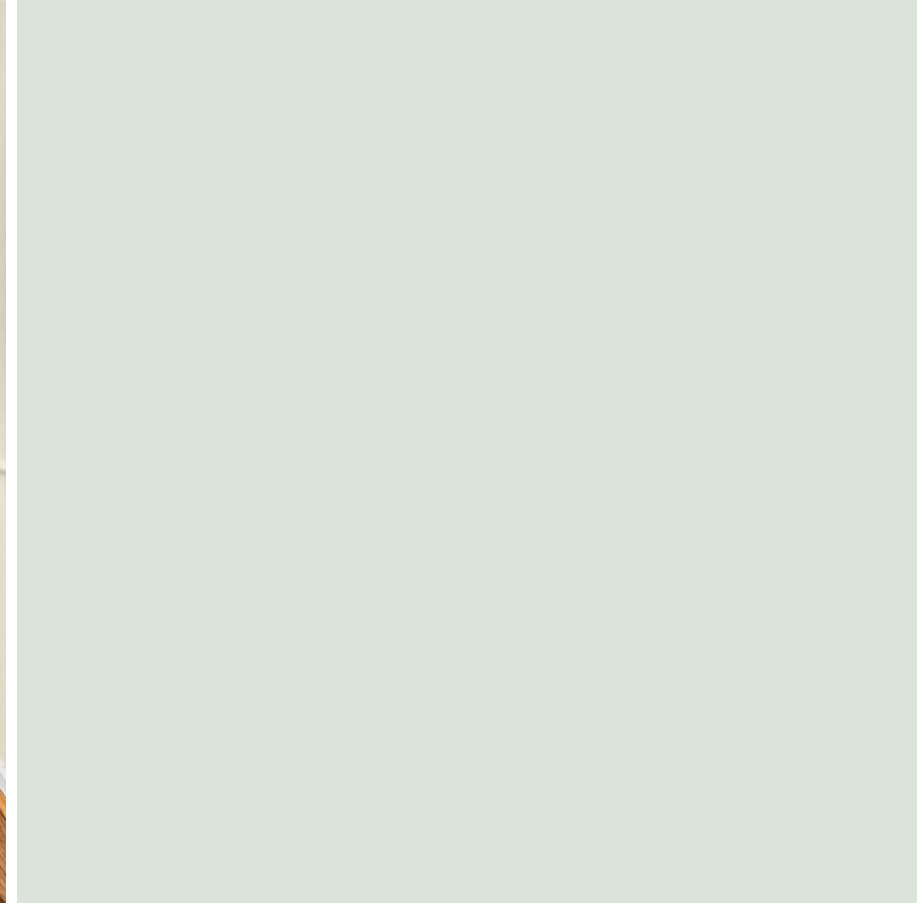
The two bathrooms ensure that morning routines are a breeze, catering to the needs of a busy household.

Selsey Street is well-positioned, offering easy access to local amenities, transport links, and green spaces, making it a desirable location for those who appreciate both city life and the tranquillity of nature. This flat presents an excellent opportunity for anyone looking to settle in a vibrant part of London, combining modern living with the charm of a community-oriented neighbourhood.



Lounge	15'6" x 13'5" (4.734 x 4.082)
Kitchen	10'8" x 9'8" (3.253 x 2.936)
Bedroom 1	13'7" x 8'3" (4.146 x 2.503)
Bedroom 2	7'1" x 10'6" (2.156 x 3.202)
Bedroom 3	9'9" x 13'0" (2.973 x 3.966)





Directions

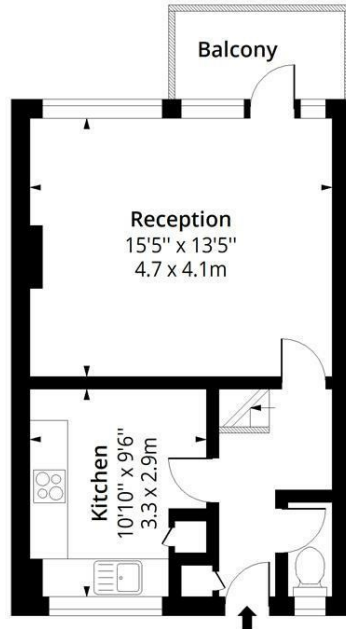




Floor Plans

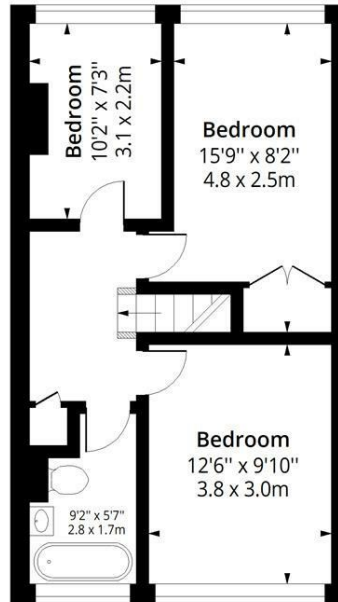
Robinson House E14

Approx. Gross Internal Area 843 Sq Ft - 78.31 Sq M
 Approx. Gross Balcony Area 41 Sq Ft - 3.81 Sq M



First Floor

Floor Area 389 Sq Ft - 36.14 Sq M



Second Floor

Floor Area 454 Sq Ft - 42.18 Sq M

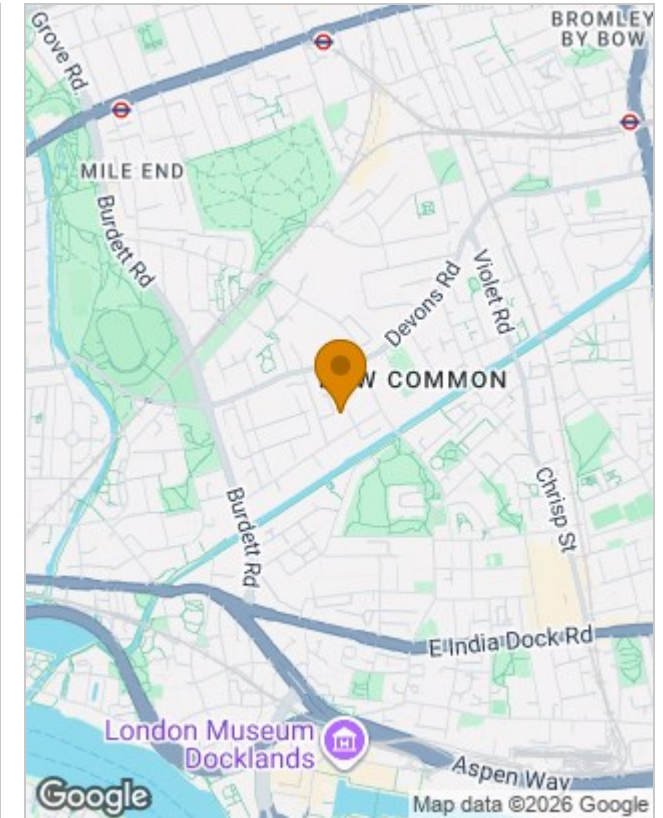


Measured according to RICS IPMS2. Floor plan is for illustrative purposes only and is not to scale. Every attempt has been made to ensure the accuracy of the floor plan shown, however all measurements, fixtures, fittings and data shown are an approximate interpretation for illustrative purposes only. 1 sq m = 10.76 sq feet.

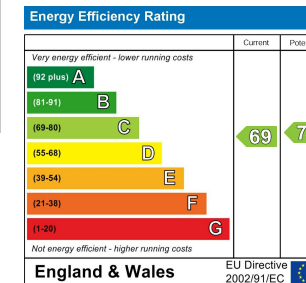
ipaplus.com

Date: 4/6/2026

Location Map



Energy Performance Graph



Viewing

Please contact our Redbridge Lettings Office on 020 8551 0211 if you wish to arrange a viewing appointment for this property or require further information.

The particulars are set out as a general outline only for the guidance of intended purchasers or lessees, and do not constitute, any part of a contract. Nothing in these particulars shall be deemed to be a statement that the property is in good structural condition or otherwise nor that any of the services, appliances, equipment or facilities are in good working order. Purchasers should satisfy themselves of this prior to purchasing.