



## 51 Williams Place 170 Greenwood Way, Harwell, Didcot, OX11 6GY

£1,100 PCM - Available Now

- Over 70's
- One-bedroom, First floor apartment
- Integrated appliances
- EPC B, Council Tax Band B.

# 51 Williams Place 170 Greenwood Way, Harwell OX11 6GY

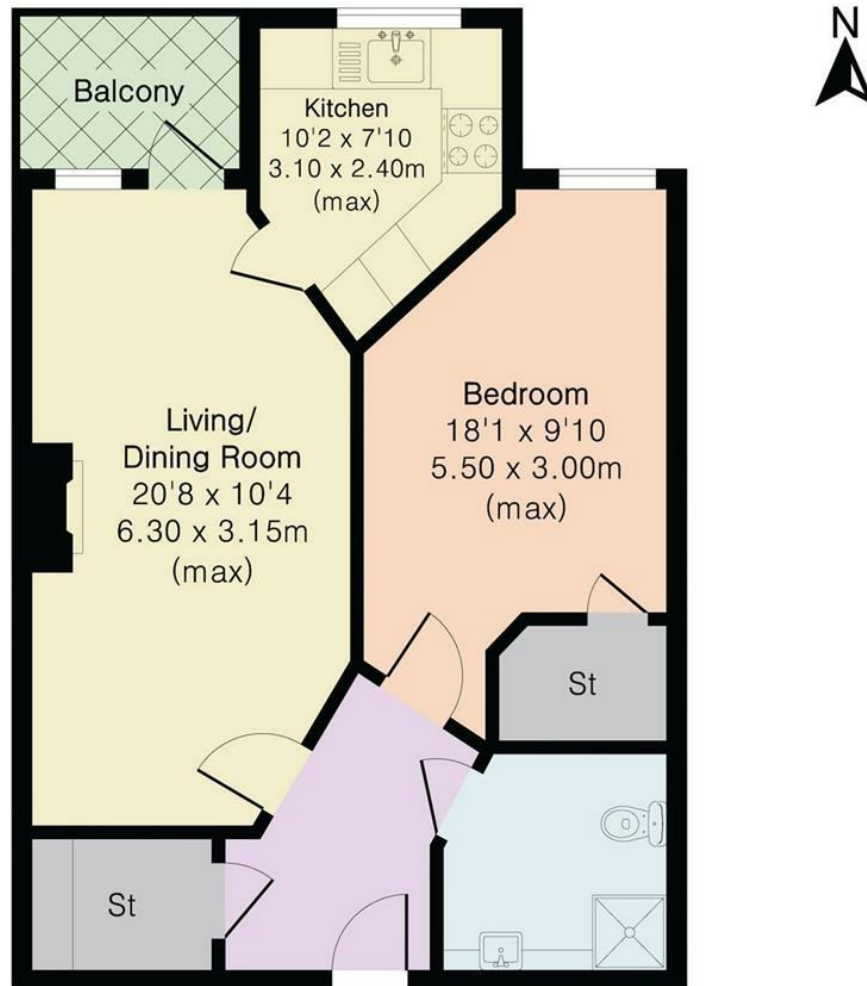
A well-presented, one bedroom, first floor apartment available for over 70s. The development offers a host of facilities including a restaurant, salon, guest suite and optional care package. For added peace of mind the apartments are equipped with a 24-hour emergency call system and an Estate Manager. Williams place is situated on the edge of the Great Western Park development close to a range of shops and transport connections to the centre of town including The Orchard Centre and Didcot Parkway railway station. EPC B, Council Tax Band B.



Council Tax Band: B




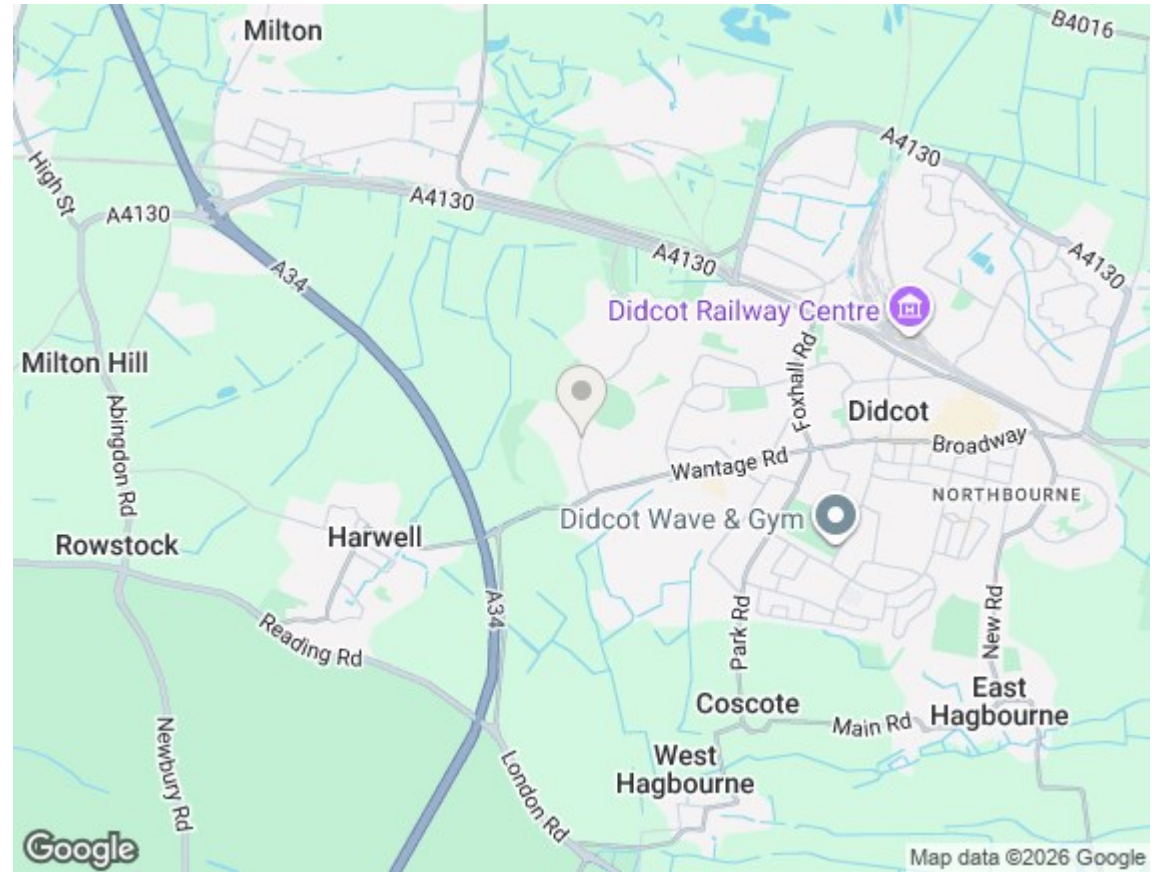
Approximate Gross Internal Area 564 sq ft - 52 sq m



Second Floor

## Energy Efficiency Rating

	Current	Potential
Very energy efficient - lower running costs		
(92 plus) <b>A</b>		
(81-91) <b>B</b>	<b>86</b>	<b>86</b>
(69-80) <b>C</b>		
(55-68) <b>D</b>		
(39-54) <b>E</b>		
(21-38) <b>F</b>		
(1-20) <b>G</b>		
Not energy efficient - higher running costs		
<b>England &amp; Wales</b>	EU Directive 2002/91/EC	



### Directions

### Viewings

Viewings by arrangement only. Call 01235 514267 to make an appointment.

### Council Tax Band

B