



Wyndham Road, SE5

£540,000

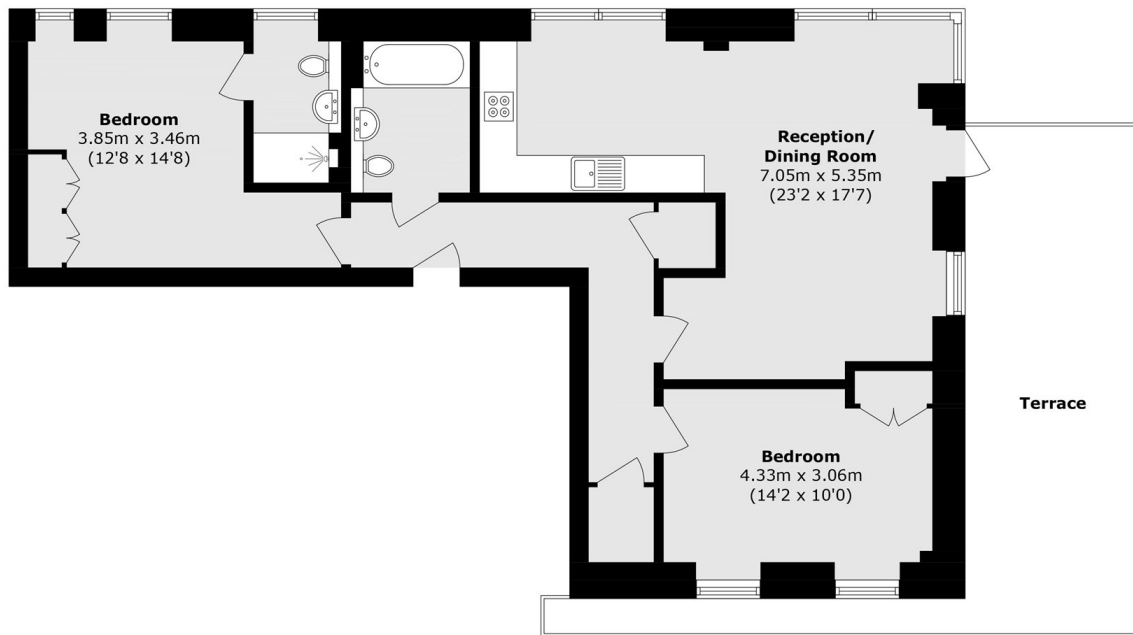
A stylish two double bedroom modern apartment in amazing condition throughout. Flooded with natural light, the property has a sociable open plan living room and kitchen benefitting from direct access onto the roof terrace. This turnkey property also benefits from good storage and two bathrooms.

Located just off Camberwell Road, near the green spaces of Burgess Park with great access to fantastic bus services getting you into Elephant & Castle, the City and beyond. Camberwell is a short walk away benefitting from an array of restaurants and pubs and cafes.

Features

- Two Double Bedrooms
- Amazing Condition
- Roof terrace
- Two Bathrooms
- Excellent Location
- Storage

Wyndham Road, London, SE5



Total area (approx.): 85.3 sq. m (918.2 sq. ft)
Terrace area (approx.): 26.2 sq. m (282.0 sq. ft)

||