



6 Station Road

, Kintbury, Berkshire, RG17 9UP



A lovely three bedroom house with rear garden and car port situated in the heart of the sought after village of Kintbury.

114 High Street, Hungerford, Berkshire RG17 0LU  
Telephone: 01488 683334  
Email: sales@nyeandco.co.uk  
[www.nyeandco.co.uk](http://www.nyeandco.co.uk)

Entrance hall with downstairs cloakroom | Kitchen | Open plan living/dining room with door onto the garden  
Master bedroom with fitted wardrobes and en-suite shower room | Double bedroom | Single bedroom | Family bathroom  
Wooden double glazing | Electric heating | Pretty garden with rear access | Car port and parking space | Being sold with no onward chain

Asking Price £430,000

SITUATION

Nestled in the heart of the village of Kintbury with plenty of open countryside nearby. Village facilities include doctors’ surgery, public houses, post office/corner shop, antique shop and sports club. Kintbury has a railway station with direct trains to London (Paddington). Newbury is about 6 miles away, Hungerford 3 miles and the M4 is easily accessed at Junction 13 (eastbound) and Junction 14 (westbound) both about 6 miles distant.

DESCRIPTION

A charming three bedroom house situated in the heart of Kintbury whilst still having parking. Accommodation comprises entrance hall with downstairs cloakroom, kitchen and open plan living/dining room with doors onto

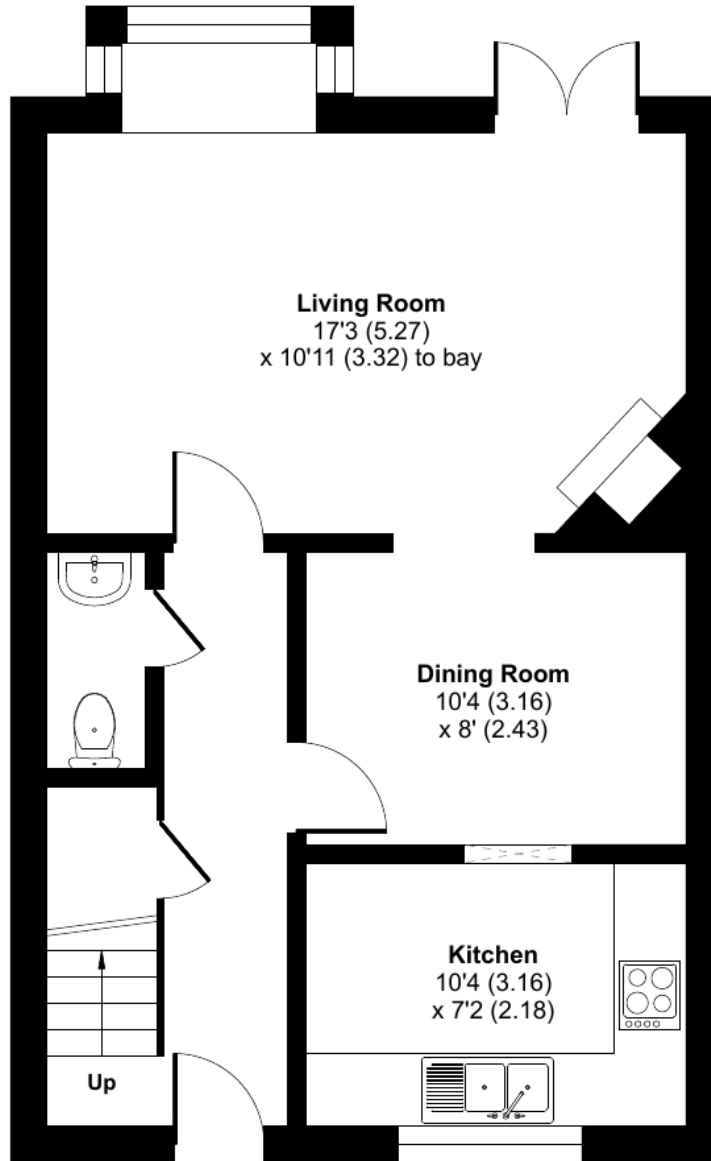
the garden. Upstairs there is a master bedroom with fitted wardrobes and en-suite shower room, double bedroom, single bedroom and family bathroom.

To the front the property has a small garden and there is a lovely rear garden with patio and lawn and useful rear access. Parking is provided by car port and separate car parking space.

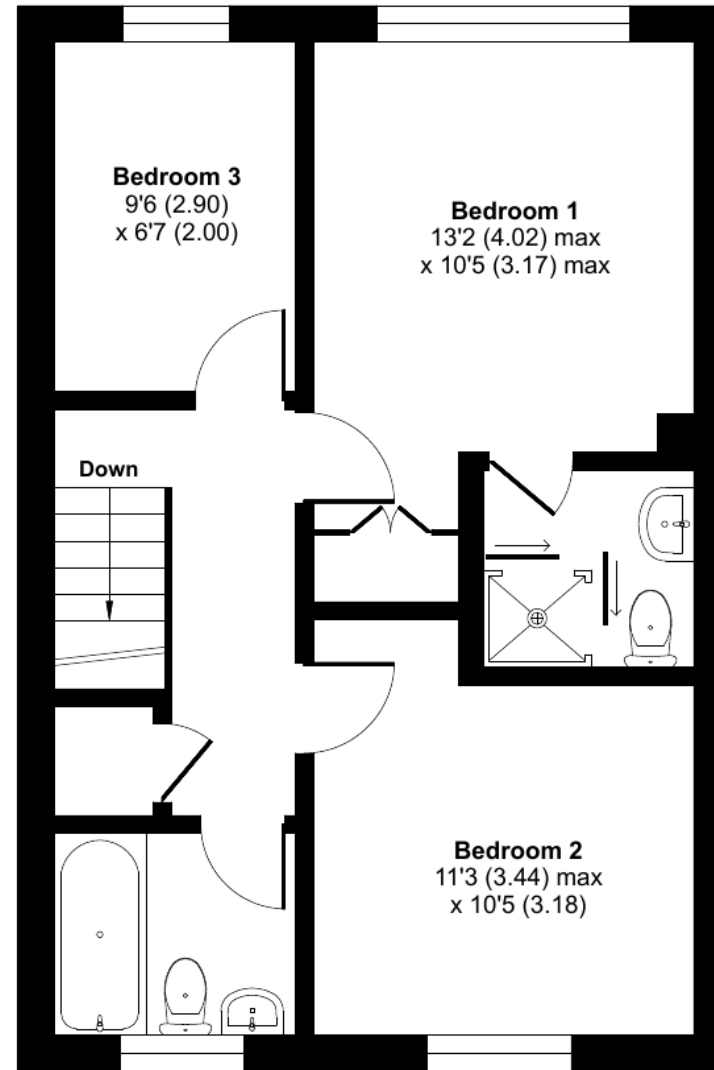
The property is being sold with no onward chain and viewing is strongly recommended.

COUNCIL TAX  
West Berkshire – Band E

Score	Energy rating	Current	Potential
92+	A		
81-91	B		
69-80	C		79 C
55-68	D	64 D	
39-54	E		
21-38	F		
1-20	G		



**GROUND FLOOR**



**FIRST FLOOR**

Approximate Area = 953 sq ft / 88.5 sq m

For identification only - Not to scale

Whilst we at **Nye & Co** estate agents endeavour to ensure the accuracy of property details produced and displayed, we have not tested any apparatus, equipment, fixtures and fittings or services and so cannot verify that they are connected, in working order or fit for the purpose. Neither have we had sight of the legal documents to verify the Freehold or Leasehold status of any property. A Buyer is advised to obtain verification from their solicitor and/or surveyor. A Buyer must check the availability of any property and make an appointment to view before embarking on any journey.



**114 High Street, Hungerford, Berkshire RG17 0LU**

Telephone: 01488 683334

Email: [sales@nyeandco.co.uk](mailto:sales@nyeandco.co.uk)

[www.nyeandco.co.uk](http://www.nyeandco.co.uk)

