



Coverdale Road W12



# Coverdale Road W12

- 4 BEDROOMS**
- 3 RECEPTIONS**
- KITCHEN / BREAKFAST ROOM**
- 2 BATHROOMS**
- LOFT ROOM**
- PRIVATE GARDEN**
- EPC RATING: TBC**
- COUNCIL TAX BAND: H**

A well presented 4 bedroom upper maisonette arranged over the raised ground, first, second and third floors of an impressive Victorian terraced building. This substantial home offers excellent living and entertaining space, a private entrance, and its own garden.

The raised ground floor features a bright and spacious double reception room with wooden flooring, striking high ceilings, a charming bay window, and an elegant feature fireplace, along with a clearly defined dining area. The kitchen is complemented by a generous breakfast room, with direct access to stairs leading down to the private garden.

On the first floor, the front bedroom is flooded with natural light and is currently used as an additional reception room. This level also includes a further double bedroom and a modern shower room.

The second floor provides 3 well proportioned bedrooms and a family bathroom, with stairs leading up to a versatile loft room, perfect for use as a home office, playroom, or guest space.

Extending to approximately 2,283 sq ft, this well configured maisonette is ideally located close to a range of highly regarded state and private schools. Excellent transport links can be found at Shepherd's Bush, while the extensive shopping, dining, and leisure amenities of Westfield London are all within easy reach.

**PRICE GUIDE £1,250,000**  
**FREEHOLD**

**SUBJECT TO CONTRACT**

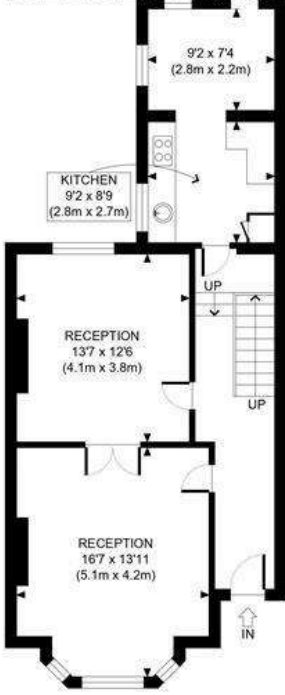
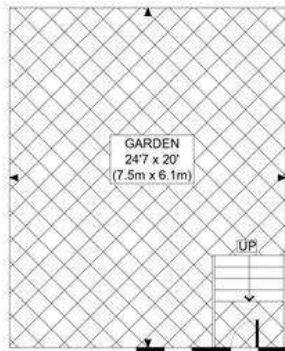








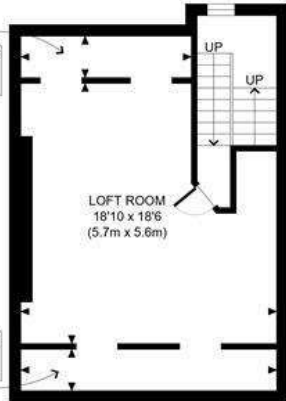
COVERDALE ROAD, W12



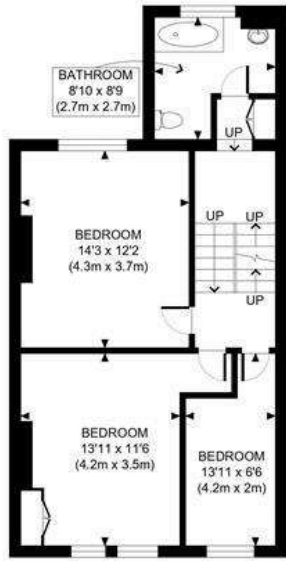
GROUND FLOOR  
GROSS INTERNAL  
FLOOR AREA 686 SQ FT



FIRST FLOOR  
GROSS INTERNAL  
FLOOR AREA 609 SQ FT



THIRD FLOOR  
GROSS INTERNAL  
FLOOR AREA WITH LOW STORAGE 483 SQ FT  
FLOOR AREA WITHOUT LOW STORAGE 377 SQ FT



SECOND FLOOR  
GROSS INTERNAL  
FLOOR AREA 611 SQ FT

APPROX. GROSS INTERNAL FLOOR AREA WITH LOW STORAGE: 2389 SQ FT/ 222 SQM  
APPROX. GROSS INTERNAL FLOOR AREA WITHOUT LOW STORAGE: 2283 SQ FT/ 212 SQM