

**Second Avenue, Weeley
CO16 9HT
£270,000 Freehold**

Town & Country
residential sales and lettings



**9 Osbornes Court, Victoria Place, Brightlingsea, Essex CO7 0EB 01206 302288
www.townandcountryresidential.co.uk**



- VILLAGE LOCATION
- CHAIN FREE
- THREE BEDROOMS
- LOUNGE & DINING AREA
- CONSERVATORY
- SHOWER ROOM
- GARAGE & OFF STREET PARKING
- DOUBLE GLAZING
- GAS CENTRAL HEATING
- MODERNISATION REQUIRED

**** CHAIN FREE: A GREAT OPPORTUNITY TO ACQUIRE THIS THREE BEDROOM SEMI-DETACHED BUNGALOW IN NEED OF A BIT OF LOVE ****

Located just on the fringe of the village this spacious property offers not only lateral living, but also that all important third bedroom.

The property is ideally located near the A133, giving access to the A120 and also Weeley mainline railway station.

As previously mentioned, modernisation and a certain degree of refurbishment will be required to turn this into what could be a lovely home.

The accommodation comprises of entrance porch, entrance hall, living room, dining area, kitchen, conservatory, shower room and three bedrooms.

Outside the front garden is open plan with a driveway providing off street parking and access to the garage. The rear garden is of good size.



The accommodation with approximate room sizes are as follows:

ENTRANCE PORCH

Double glazed entrance door, double glazed frosted window to front elevation.

ENTRANCE HALLWAY

Frosted door, double glazed window to porch. Access to loft space with loft ladder.

LIVING ROOM

16' 11" x 11' 6" (5.15m x 3.50m)

Fire surround with inset electric coal effect fire. Open plan to dining area.

DINING AREA

9' 10" x 7' 9" (2.99m x 2.36m)

Double glazed patio doors to rear garden, double glazed window to conservatory, radiator.

KITCHEN

11' 7" x 9' 7" (3.53m x 2.92m)

Double glazed window to rear and side elevations, double glazed frosted door to conservatory. One and a quarter bowl inset ceramic sink unit to work top with cupboards under. Range of floor standing cupboards, drawers and units with adjacent work tops and wall mounted units. Space for washing machine, space for tumble dryer and space for fridge. Neff induction hob and Neff electric double oven. Wall mounted gas fired boiler, radiator.

CONSERVATORY

8' 6" x 8' 4" (2.59m x 2.54m)

Polycarbonate style roofing, double glazed windows to two elevations, double glazed door to garden. Tiled flooring.



BEDROOM ONE

14' 2" x 10' 5" (4.31m x 3.17m)

Double glazed window to front elevation, radiator.

BEDROOM TWO

9' 5" x 7' 5" (2.87m x 2.26m)

Double glazed window to front elevation, radiator.

BEDROOM THREE

9' 5" x 7' 5" (2.87m x 2.26m)

Double glazed window to side elevation, radiator.

SHOWER ROOM

8' 7" x 5' 10" (2.61m x 1.78m)

Double glazed frosted window to side elevation. Low level WC, wash hand basin with mixer tap and vanity cupboard and corner shower with shower unit and curved screen doors. Built-in airing cupboard, radiator.

FRONT GARDEN

Open plan laid to stones/shingle, flower beds. Driveway providing off road parking, side access.

GARAGE

17' 11" x 8' 2" (5.46m x 2.49m)

Up and over door, power/lighting, personal door to garden.

REAR GARDEN

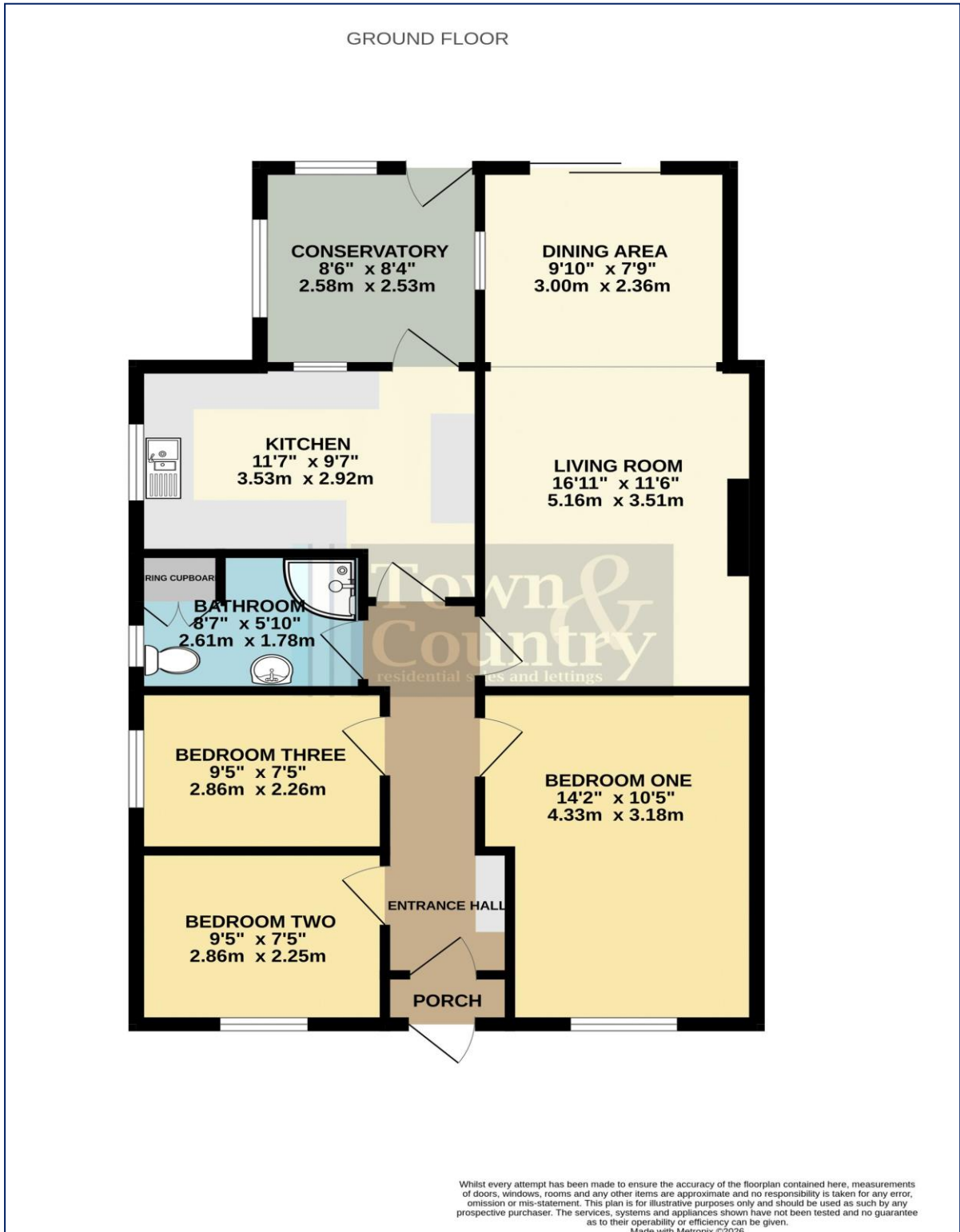
Paved area, block paved area. Outside water tap, wild garden with flowers and shrubs and meandering pathway.







Score	Energy rating	Current	Potential
92+	A		
81-91	B		87 B
69-80	C	72 C	
55-68	D		
39-54	E		
21-38	F		
1-20	G		



Property Misdescription Act 1991: The Agent has not tested any apparatus, equipment, fixture, fittings or services and does not verify they are in working order, fit for their purpose, or within ownership of the sellers, or within the lessors interest therefore the buyer or ingoing tenant must assume the information given is incorrect. All sizes are approx. and should not be relied on. Buyers/ tenants should satisfy themselves of dimensions when ordering inward fixtures and fittings. Neither has the agent checked the legal documentation to verify legal status of the property, or any neighbourhood planning that is pending, current or proposed for the future. A buyer or ingoing tenant must assume the information is incorrect until it has been verified by their own solicitors. Nothing concerning the type of construction, condition of the structure or its surroundings is to be implied from the photograph, artist's impression or plans of the property.