



St. Margarets Road, TW1

£299,950

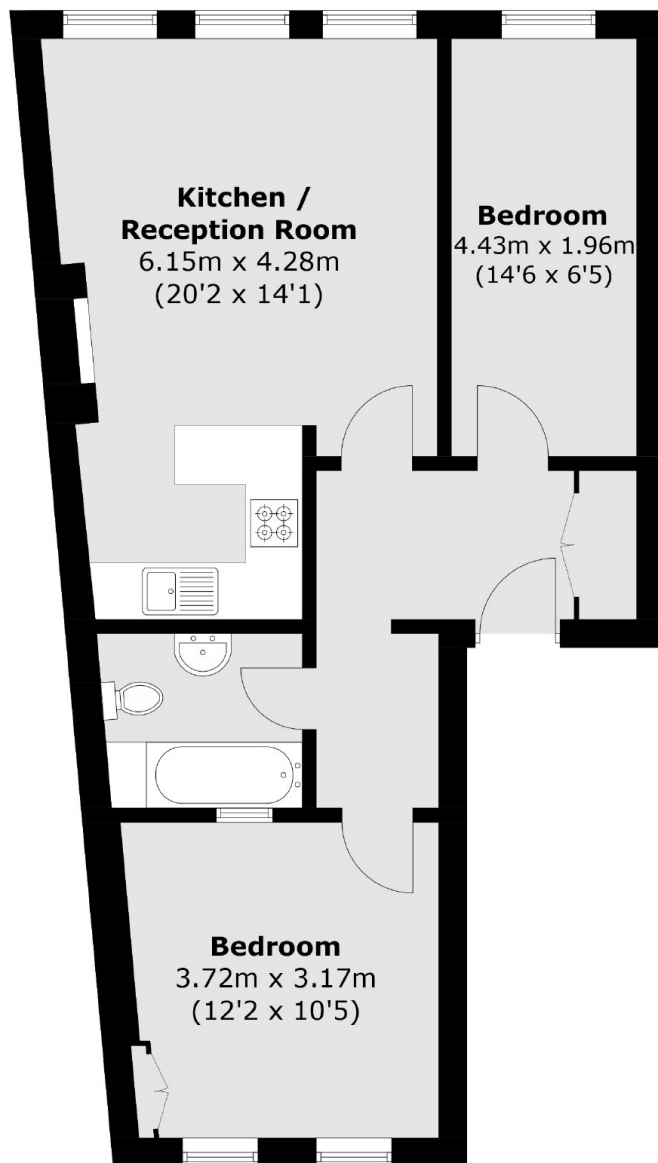
Cash buyers only. A fantastic two double bedroom first floor apartment in the heart of St Margarets village. Buyers will appreciate the long lease, high ceilings, generous room proportions and additional storage/study room in the communal hallway.

This property is in the centre of town, everything you need is on your doorstep; shops, cafés, restaurants and train station. Marble Hill Park, the River Thames, bus routes, walks into Richmond as well as being in the popular Orleans catchment area. Moor Mead Park is also close by.

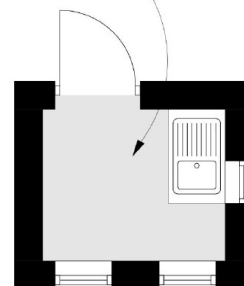
Features

- Two Double Bedrooms
- Central Location
- Period Features
- Separate Study/Storage Room
- First Floor
- Long Lease

St. Margarets Road, Twickenham, TW1



Storage Room
1.93m x 1.61m
(6'4 x 5'3)



**(Not Shown In Actual
Location / Orientation)**

Total area (approx.): 56.1 sq. m (603.9 sq. ft)
Storage Room (approx.): 3.2 sq. m (34.4. ft)