



## Lady Booth Road, KT1

£330,000

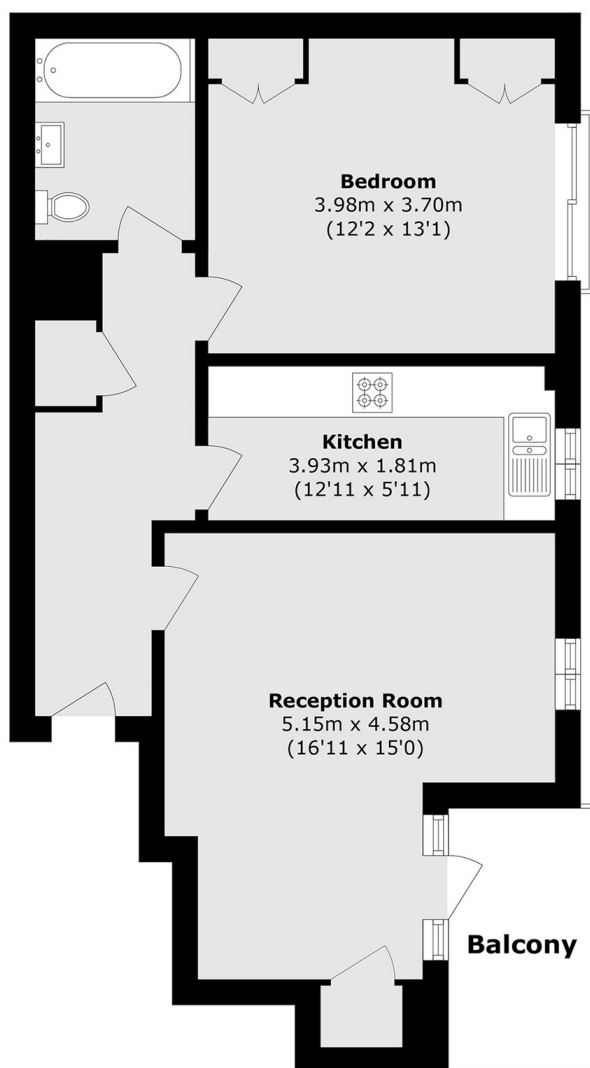
An immaculate, spacious and beautifully presented one double bedroom apartment, situated on the second floor of this attractive modern development. The apartment is flooded with natural light thanks to its south facing orientation, while the spacious private balcony, accessed via the reception room, provides the perfect sun trap. Further benefits include a share of freehold and private residents parking.

Caversham House is perfectly positioned on Lady Booth Road, less than 100 yards from Kingston Town Centre. Kingston's mainline station and the River Thames are both less than 500 yards away, making this an ideal location to enjoy everything Kingston has to offer.

### Features

- 1 Double Bedroom
- Private Residents Parking
- Bright & Spacious
- Share Of Freehold
- South Facing Balcony
- Town Centre Location

# Lady Booth Road, Kingston Upon Thames, KT1



Total area (approx.): 59.2 sq. m (637.2 sq. ft)

Balcony area (approx.): 6.7 sq. m (72.1 sq. ft)