



 Moovahome.co.uk

Denbeck Wood, Eastleaze, Swindon, Wiltshire, SN5 7EJ

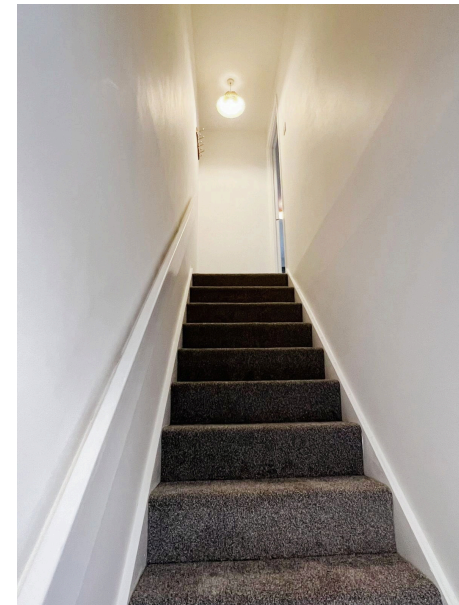
£850PCM (Deposit: £850)

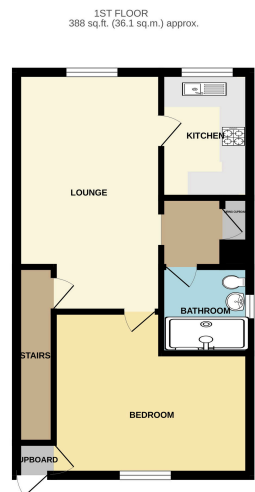
1 1 1



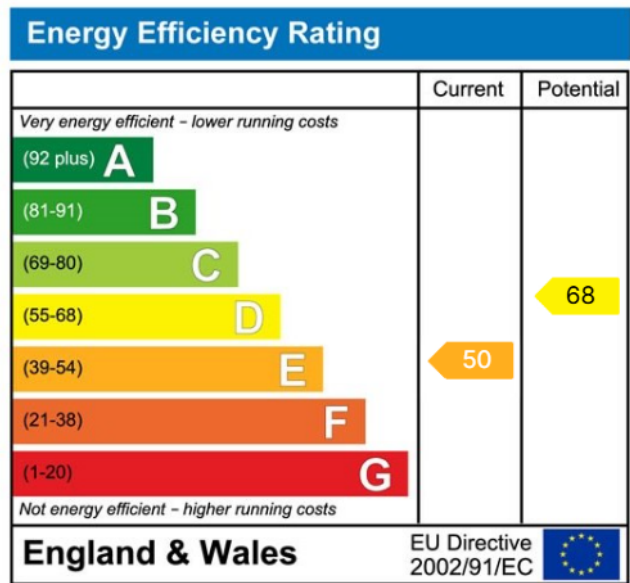
Tax Band: A Furnished: Unfurnished

Moovahome are pleased to offer this first floor one bedroom apartment in Eastleaze, West Swindon. Unfurnished, private parking and available from late August 2025. Managed by Moovahome.





TOTAL FLOOR AREA - 388 sq.ft. (36.1 sq.m.) approx.
 Whilst every attempt has been made to ensure the accuracy of the floorplan, the floorplan is for information only and is not intended to be used as a basis for any legal proceedings. The floorplan is not intended to be used as a basis for any legal proceedings. The floorplan is not intended to be used as a basis for any legal proceedings. The floorplan is not intended to be used as a basis for any legal proceedings.



www.moovahome.co.uk

Unit 20 Ergo Business Park, Kelvin Road, Swindon SN3 3JW

Telephone 01793 512345

hello@moovahome.co.uk

Lettings: Mr A. Cain T/A Moovahome
 Moovahome, Unit 20 Ergo Business Park, Kelvin Road, Swindon SN3 3JW

Sales: Moovahome is a trading name of Moovahome Ltd.
 Registered Office: Unit 20 Ergo Business Park, Kelvin Road, Swindon SN3 3JW