



**HENDERSON
CONNELLAN**

ESTATE AGENTS

'A Country-Style Retreat with Views!'

Boasting a stylish country-style interior and neighbouring countryside views, this stunning two-bedroom home offers a perfect blend of country-style living and modern-day convenience, with its fantastic open plan layout, two double bedrooms and a beautifully landscaped south-facing garden!



Liberator Drive
Market Harborough
LE16 9FZ



Entrance is gained through a contemporary, composite front door, into a welcoming entrance hall featuring attractive herringbone style flooring, modern panelled doors, access to a guest WC and stairs rise to the first floor.

The stunning open-plan kitchen/dining/living area has been thoughtfully designed to create an ideal space for both relaxation and entertaining. It features stylish herringbone flooring throughout and impressive bi-folding doors that open directly onto the south-facing garden, seamlessly blending indoor and outdoor living.

The kitchen features a range of sleek gloss wall and base units, complemented by timber-effect work surfaces with matching upstands. Additional features include a one-and-a-half bowl sink with mixer tap and drainer, a Hotpoint double oven with built-in microwave and warming drawer, a four-ring gas hob, and other integrated appliances including a fridge/freezer and dishwasher.

There is also a useful utility cupboard, with lighting, providing storage and space for a washing machine (current washing machine will stay).

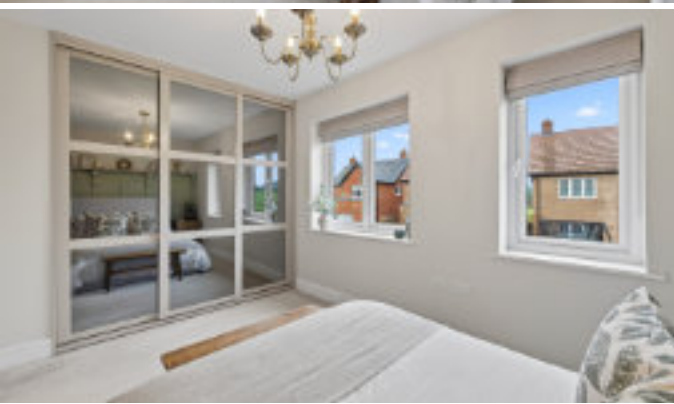
Guest WC comprising continued herringbone style flooring, beautiful floor to ceiling wall tiling, LED ceiling spotlights, a wall hung wash hand basin and a low-level WC.

Stairs rise to the first-floor landing with a window to the side elevation, access to all rooms, and a loft hatch to a partially boarded attic.

The beautifully presented main bedroom is situated to the rear of the property and enjoys views over the garden and surrounding countryside. The room also features stylish fitted wardrobes with sliding doors and an elegant decorative wall panelling with shelving above.

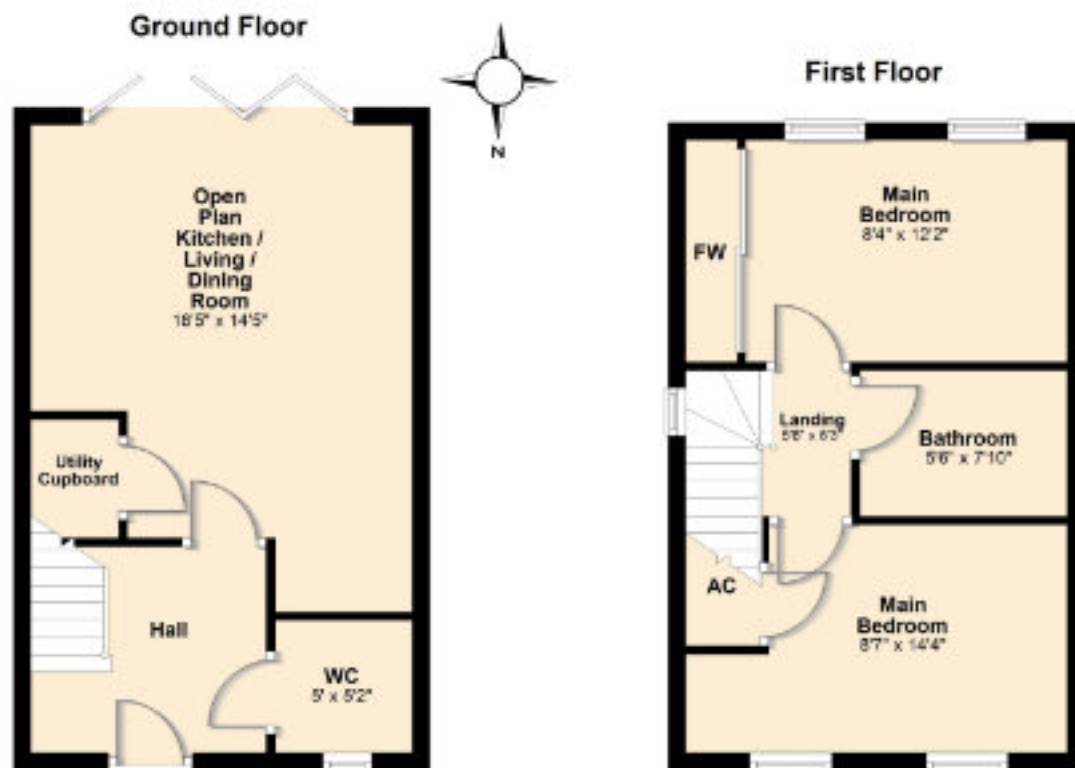
The second bedroom is also a generous double size, offering countryside views to the front, neutral décor, and the added benefit of a spacious airing cupboard.

Modern bathroom complete with sleek floor to ceiling wall tiling, a chrome heated towel rail, LED ceiling spotlights, and a white Sottini three-piece suite to include a panel enclosed bath with a shower screen and shower over, a floating wash hand basin with a vanity drawer beneath and a low-level WC.



Set within a desirable cul-de-sac, the property enjoys an attractive, well-kept frontage with off-road parking for two vehicles, a gravelled border, and a welcoming pathway leading to the front door.

The rear garden has been beautifully landscaped and offers a popular south-facing aspect. The garden features two paved patio areas ideal for outdoor entertaining, a well-kept lawn, an outdoor kitchen/BBQ, planted borders and a side gate to the front elevation.



*Although great care has been taken to create an accurate floorplan, it is for visual representation only and does not represent exact proportions.



Henderson Connellan, 63 High Street,
Market Harborough, LE16 7AF

01858 410400
marketharboroughsales@hendersonconnellan.
co.uk

