



## Osnaburgh Street, NW1

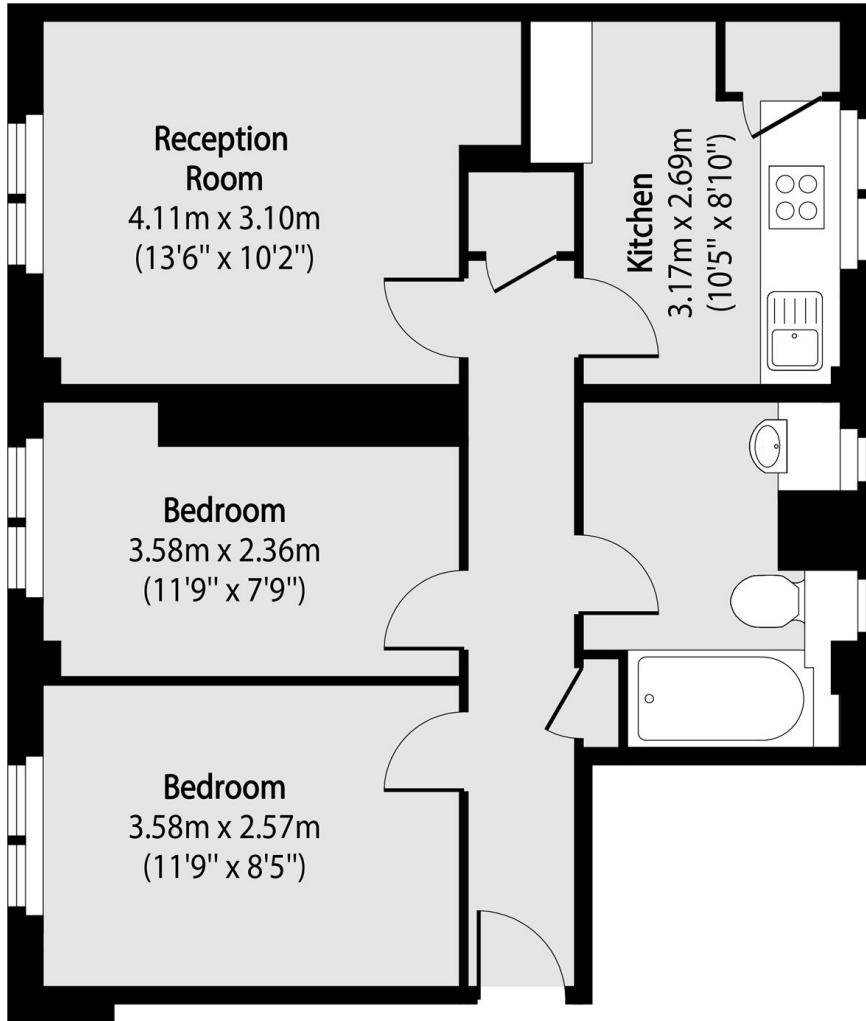
£450,000



- Two Bedrooms
- Separate Kitchen

- Family Bathroom
- No Onward Chain

- Close to Euston Station
- Low Service Charges



Total area (approx): 52.39 sq m (564 sq. ft)

**Marsh & Parsons Camden**

27 Parkway, London, NW1  
7PN  
020 7244 2200