



Grove Avenue, TW1

£3,750 Per calendar month

New to the market is this newly decorated four bedroom Victorian house in a central location in Twickenham. This charming property is filled with character with the perfect layout for families.

Grove Avenue is located just off Twickenham high street and close to Twickenham mainline station. The area is renowned for its excellent private and state schools.

Features

- Victorian House
- Over Three Floors
- Four Bedrooms
- Two Modern Bathrooms
- Downstairs W.C
- Newly Decorated

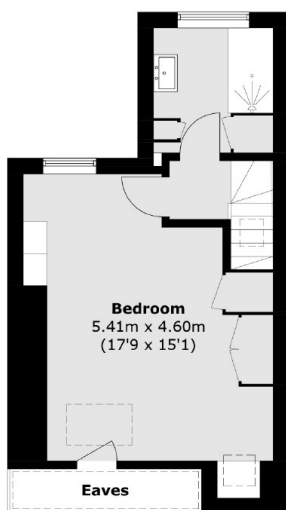


Grove Avenue, TW1

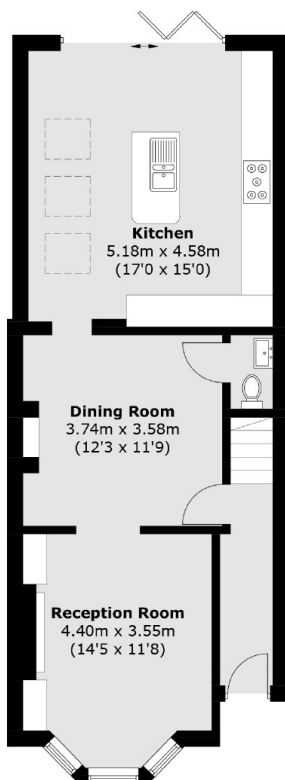
There is a newly decorated double reception room which offers versatility with an open plan kitchen which has bi-fold doors onto the rear garden. To the first floor, you have three great bedrooms and a fresh family bathroom. The top floor holds the master bedroom with a contemporary en-suite bathroom. The garden is a great size and easy to maintain.



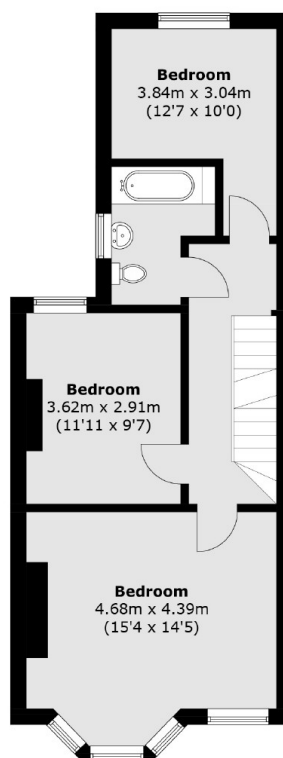
Grove Avenue, Twickenham, TW1



First Floor



Ground Floor



First Floor

Total area (approx.): 144.8 sq. m (1,558.5 sq. ft)
(Excluding Eaves)