

16 Buttercup Drive
Meadow Hill
Newcastle Upon Tyne
NE15 9FW

Offers Over
£340,000



16 Buttercup Drive
Meadow Hill
Newcastle Upon Tyne
NE15 9FW

- 4 bedroom detached house
- Separate utility area
- En-suite to bedroom 1
- Larger style garage
- Cul-de-sac location
- Great open plan kitchen diner
- Downstairs w/c
- Double length driveway
- West facing rear garden
- EV charger

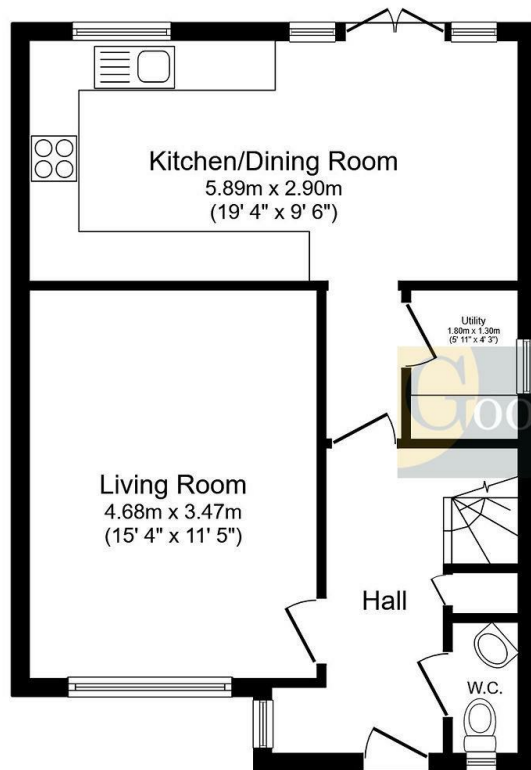






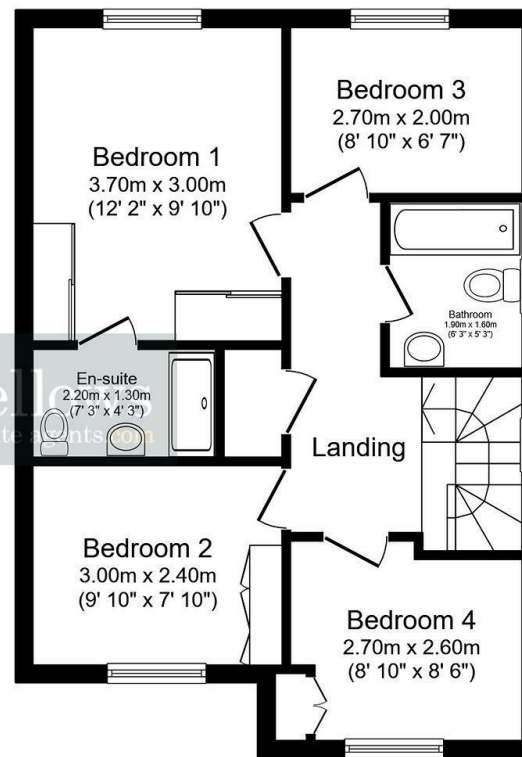
16 Buttercup Drive, Meadow Hill, Newcastle Upon Tyne, NE15 9FW





Ground Floor

Floor area 47.9 sq.m. (516 sq.ft.)



First Floor

Floor area 47.9 sq.m. (515 sq.ft.)

Total floor area: 95.8 sq.m. (1,031 sq.ft.)

This floor plan is for illustrative purposes only. It is not drawn to scale. Any measurements, floor areas (including any total floor area), openings and orientations are approximate. No details are guaranteed, they cannot be relied upon for any purpose and do not form any part of any agreement. No liability is taken for any error, omission or misstatement. A party must rely upon its own inspection(s).



EPC Rating: B
Council Tax Band: D

Whilst every care has been taken to prepare these particulars, they are for guidance purposes only. All measurements are approximate and whilst every care has been taken to ensure their accuracy, they should not be relied upon and potential buyers/tenants are advised to recheck the measurements. The agent has not tested any equipment, services, fixtures or fittings and makes no representation regarding their condition.

CONTACT

128 The Roman Way, West Denton,
Newcastle upon Tyne, NE5 5AD

E:
westdenton@goodfellowsestateagents.com
T: 0191 2677500

