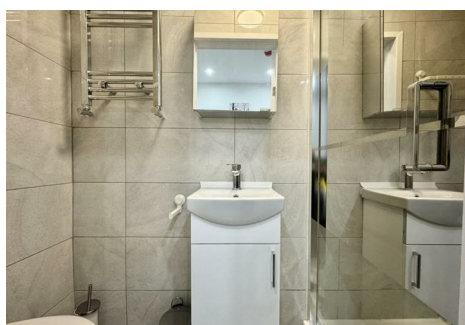
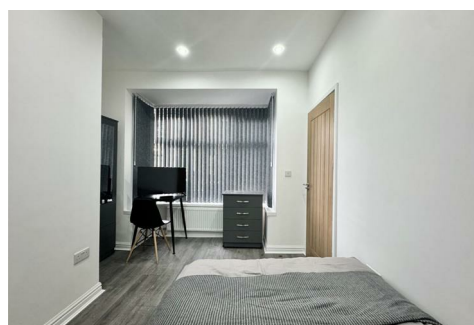




RE/MAX
Elite



215 St. Pauls Road, Smethwick, B66 1QS
£600 Per month

AVAILABLE NOW

Double bedroom with private en-suite bathroom in a house share in a popular location in Smethwick. The room is fully furnished to a high standard.

All bills are included and WiFi is also available at no extra charge.

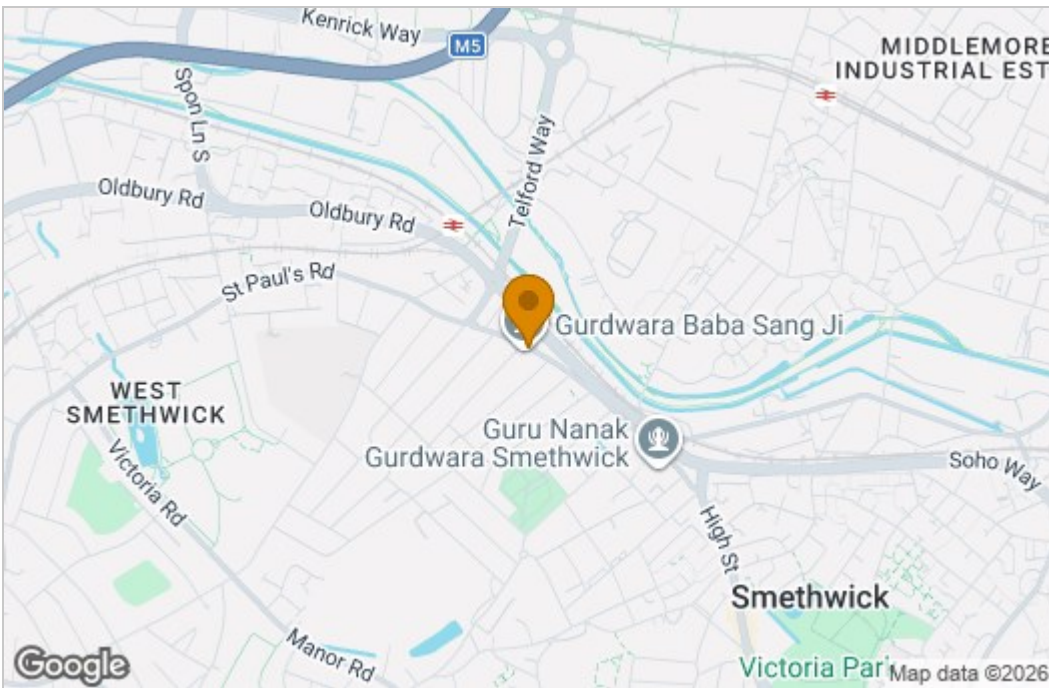
The spacious shared kitchen/lounge is well equipped with modern appliances and includes plenty of worktop/counter and storage space. The lounge area shows off great quality furniture and a cosy but modern environment which has been laid out with your convenience in mind.

The property also benefits from being close to local amenities and transports links and has a rear garden as well as free on-street parking.

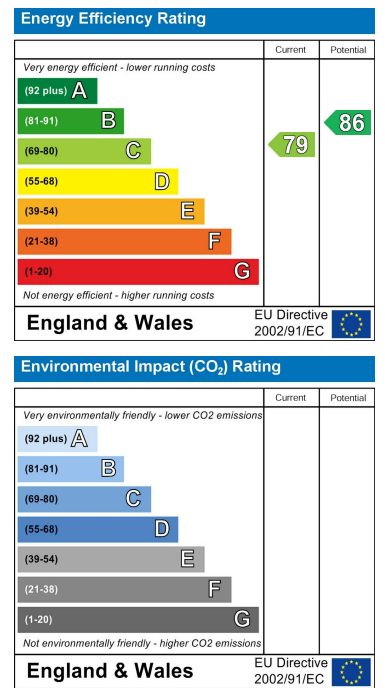
Please call or email to book in a viewing!

Floor Plan

Area Map



Energy Efficiency Graph



These particulars, whilst believed to be accurate are set out as a general outline only for guidance and do not constitute any part of an offer or contract. Intending purchasers should not rely on them as statements of representation of fact, but must satisfy themselves by inspection or otherwise as to their accuracy. No person in this firm's employment has the authority to make or give any representation or warranty in respect of the property.