



## Exeter Road, NW2 £500,000

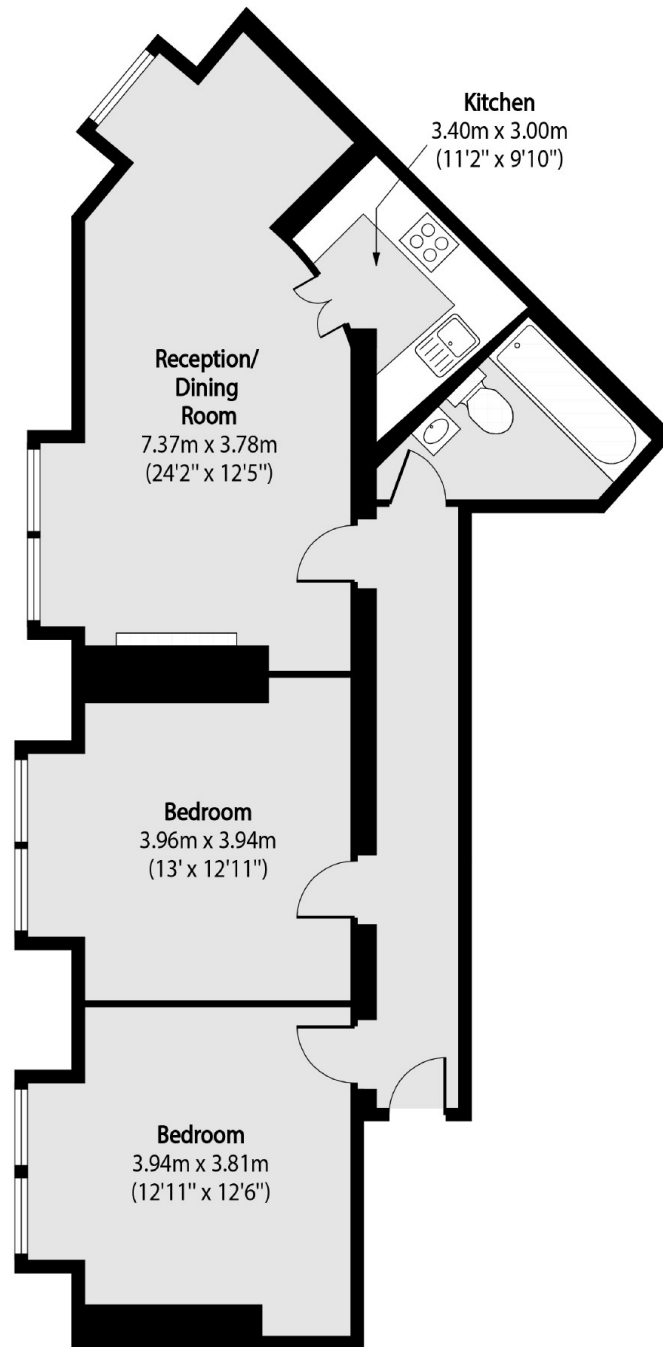
We are proud to offer this two-bedroom, top floor apartment with no onward chain. Measuring in excess of 750 sqft, this bright and spacious property offers a southerly aspect, double-sized reception/dining area, with original Edwardian period fireplace, separate modern fitted kitchen and three-piece bathroom. In addition, the master bedroom offers a large arched picture window; the second bedroom with original period panelling, fireplace and double window.

Superbly located within the Mapesbury Conservation area and close walking distance of the Kilburn High Road shops, this unusual and attractive property is served with exceptional transport links at Kilburn station (Jubilee line), Brondesbury Overground and bus routes into central London.

### Features

- Top Floor
- Two Double Bedrooms
- Reception Room
- Modern Fitted Kitchen
- Leasehold
- No Onward Chain

Exeter Road,  
London, NW2



Total area (approx): 69.96 sq m (753 sq. ft)